

The background of the entire page is a photograph of a forest. On the left side, there are several tall, straight, reddish-brown tree trunks, likely redwoods, standing in a row. The ground is covered with a thick layer of brown, fallen leaves. In the foreground, there are green ferns and moss-covered logs. On the right side, there is a dense thicket of green foliage and trees. A semi-transparent blue rectangular overlay covers the upper right portion of the image, containing the text.

# Environmental Services Products from Medline



**You** already know that Medline is a leader in the healthcare field, offering innovative products and programs since 1966. What you might not know is that Medline stocks a full line of environmental services products, ranging from toilet paper and hand towels to garbage bags, a full line of disinfectants and floor care. All of these products can ship with your medical/surgical supplies, saving you money and time. Medline is a one-stop shop for all your janitorial needs!

We know cost is a consideration. That's why Medline offers a number of programs to help keep costs down. Throughout this brochure, you will learn about our hamper stand and paper dispenser programs as well as our chemical dispensing system offer.

**Guarantee**—We guarantee everything we sell. Should you have an issue with a Medline product, please call us or speak to your Medline sales representative. We will take care of the problem right away, either by promptly exchanging the product or crediting your account.





## Environmental Services Products

Paper Products .....	4
Bags & Liners .....	8
Cart Covers .....	13
Disinfectants .....	14
Floor Care .....	18
Deodorizers .....	20
Wet Mops/Handles/Buckets .....	21
Microfiber .....	23
Carts .....	25
Safety Supplies .....	26
Hand Hygiene .....	27
Waste Receptacles .....	31
Patient Bags .....	33
Pillows & Slippers .....	34
Wire Shelving .....	35
Cubicle Curtains .....	39

If you have any questions about our products,  
call us at 1-800-MEDLINE or  
speak with your Medline sales representative.





When you choose to use our Green Tree paper line, you're helping the environment — one roll at a time! All Green Tree products are made from recycled paper, so no trees are needlessly cut down. Even though they are gentle on the environment, all 100 percent recycled Green Tree products are strong enough to stand up to tough cleaning needs at your facility.



### Toilet Tissue

ITEM NUMBER	DESCRIPTION	PACKAGING
NON25800	Standard roll, 2-ply, 4.5" x 3.8", 500 sheets/roll	96 rls/cs
NON25805	Jumbo roll, 2-ply, 3.8" x 1000'	8 rls/cs

### Think Green

#### Did you know...

- Each person uses approximately 700 pounds of paper products per year?
- Paper accounts for 40 percent of all waste?

#### Why recycle?

By recycling one ton of paper, you save:

- 17 trees
- 6,953 gallons of water
- 463 gallons of oil
- 687 pounds of air pollution
- 3.06 cubic yards of landfill space
- 4,077 Kilowatt hours of energy

**DISPENSER DEAL** Ask your Medline sales representative about our free paper dispenser program! Simply replace your current paper products with Medline's quality paper program and receive free dispensers! It's that easy! Ask for details.



### Multi-Fold Towels

- High quality, bleached or natural
- 9.125" x 9.5" sheet size
- 250 each pack, 16 packs per case

ITEM NUMBER	DESCRIPTION	PACKAGING
NON25810	Bleached, standard	4000/cs
NON25813	Bleached, deluxe	4000/cs
NON25815	Natural, deluxe	4000/cs

### C-Fold Towels

- 240 each pack, 10 packs per case

ITEM NUMBER	DESCRIPTION	PACKAGING
NON25820	13" x 10.125", bleached	2400/cs

### Roll Towels

- An economical choice
- Choose between a standard roll towel and the center-pull towel to help eliminate cross contamination

ITEM NUMBER	DESCRIPTION	PACKAGING
NON25825	7.875" x 350', natural	12 rls/cs
NON25830	Center-pull, 8.25" x 12", 600 sht/rl	6 rls/cs

### Perforated Roll Towel

- Convenient perforated towels are ready for any job
- Great household roll towel
- Two-ply, white
- 8.8" x 11" per sheet

ITEM NUMBER	DESCRIPTION	PACKAGING
NON25835	Perforated roll towel, 85 sht/rl	30 rls/cs

### Napkin

- Luncheon style
- 12" x 12"

ITEM NUMBER	DESCRIPTION	PACKAGING
NON25807	Napkin, 12 packs of 500	6000/cs





## PAPER PRODUCTS



### Our Boutique Cube-Shaped Tissue Box

These new, attractive boutique-style boxes contain our softest premium tissue. The multicolored design works with virtually any room decor. In addition to being stylish, the box also features a shield to keep dust particles at bay.

ITEM NUMBER	DESCRIPTION	PACKAGING
NON245278	2-ply, 8.33" x 9", 85 sheets/bx	36 bx/cs

### Premium

- Softness, strength and absorbency for your everyday needs
- Our highest-quality tissue
- The NON245277 tissue is the same tissue as the NON245278 boutique tissue. The only difference is the box.

ITEM NUMBER	DESCRIPTION	PACKAGING
NON245277	2-ply, 8.0" x 8.4", 100 sheets/bx	36 bx/cs

### Standard

- Made from recycled paper
- An economical choice for your facilities
- Available in three different box sizes to meet all needs

ITEM NUMBER	DESCRIPTION	PACKAGING
NON243277	2-ply, 8" x 8.3", 90 sheets/bx	30 bx/cs
NON243276	2-ply, 6" x 8", 60 sheets/bx	72 bx/cs
NON243275	2-ply, 5.7" x 7", 40 sheets/bx	200 bx/cs



### Toilet Seat Covers

Toilet seat covers protect users from disease. These white paper seat covers dispense easily and fit any toilet seat.

ITEM NUMBER	DESCRIPTION	PACKAGING
HSPHG12	Dispenser for seat covers, white plastic	2 ea
HSPHG5000	Toilet seat cover, refill, 1/2 fold	250/pk 5000/cs



### Bath Mats

Disposable bath mats guard against foot infections. These heavyweight mats also absorb moisture and prevent slipping.

ITEM NUMBER	DESCRIPTION	PACKAGING
NON24318	White with blue print, 14.5" x 20"	500/cs



### Exam Table Paper

Medline's strong, absorbent table paper protects exam tables from dirt and moisture while offering comfort to the patient. Choose from smooth or crepe finish (crepe is softer, quieter and more absorbent). Crepe is also textured, which helps keep it in place on slippery exam tables. All paper rolls are mechanically metered for exact length and are available in standard and deluxe grades. Deluxe paper is individually poly bagged for cleanliness during shipment and storage.



#### DELUXE

ITEM NUMBER	DESCRIPTION	PACKAGING
NON24322	Smooth, 18" x 225'	12 rls/cs
NON24323	Smooth, 20" x 225'	12 rls/cs
NON24326	Smooth, 21" x 225'	12 rls/cs
NON24324	Crepe, 18" x 125'	12 rls/cs
NON24325	Crepe, 21" x 125'	12 rls/cs

#### STANDARD

ITEM NUMBER	DESCRIPTION	PACKAGING
NON23319	Smooth, 14 <sup>1</sup> / <sub>2</sub> " x 225'	12 rls/cs
NON23322	Smooth, 18" x 225'	12 rls/cs
NON23323	Smooth, 20" x 225'	12 rls/cs
NON23326	Smooth, 21" x 225'	12 rls/cs
NON23324	Crepe, 18" x 125'	12 rls/cs
NON23321	Crepe, 20" x 125'	12 rls/cs
NON23325	Crepe, 21" x 125'	12 rls/cs

### Infant Scale Paper

These soft, crepe-finish paper liners help keep the scale clean while making babies more comfortable.

ITEM NUMBER	DESCRIPTION	PACKAGING
NON243200	Crepe, infant, white, 20" x 30"	1,000/cs

### Professional Towels Double as Dental Bibs

These standard tissue and tissue/poly-backed towels catch fluid and hold it, making them ideal for washing, wiping or draping. Three-ply tissue towels get the job done when poly backing is not required, while two- and three-ply tissue/poly offers maximum absorbency and strength.



ITEM NUMBER	DESCRIPTION	PACKAGING
NON24356W	2-ply tissue/poly, 13" x 18", white	500/cs
NON24356B	2-ply tissue/poly, 13" x 18", blue	500/cs
NON24361	2-ply tissue/poly, 17" x 19", white	500/cs
NON24357W	3-ply tissue, 13" x 18", white	500/cs
NON24359	3-ply tissue, 17" x 19", white	500/cs
NON24358W	3-ply tissue/poly, 13" x 18", white	500/cs
NON24358B	3-ply tissue/poly, 13" x 18", blue	500/cs



Discover Medline bags and liners—and discover that Medline offers you more! Health care’s best value also has a selection as broad as your needs.

Our vast array of sizes, gauges and colors means you’ll find a Medline bag or liner to fit any healthcare application.

Since we offer it all — and all at a great price — you can save time and money by making Medline your single supplier of bags and liners. Your Medline representative is ready to help you evaluate your bag and liner needs.

### BAG AND LINER FAQS

#### What’s the difference between low- and high-density bags and liners?

These terms describe two different types of polyethylene used in manufacturing. Bags made from low-density polyethylene feel thicker and softer. They also offer exceptional tear resistance. Bags made from high-density polyethylene are thinner, feel more rigid and provide increased puncture resistance. Because they’re thinner, high-density bags usually cost less, even though they’re just as strong!

#### What’s a micron?

A micron is a unit of measurement equal to one millionth of a meter. It is used to designate the thickness, or gauge, of high-density bags.

#### What’s a mil?

A mil is a unit of measurement equal to one thousandth of an inch. It denotes the gauge of low-density bags.

### Strong, Leakproof X-SEAL Design

Most Medline bags and liners feature a super-strong X-SEAL bottom. The X-SEAL design is a remarkable improvement over traditional flat-sealed or gusseted bags. Because it has no gussets, an X-SEAL liner has no weak spots along the bottom seal, where leaks could occur in typical bags and liners. Its unique shape allows an X-SEAL liner to easily conform to any container, distributing refuse evenly around the bag for maximum carrying capacity.



### MEDLINE’S BAG/LINER “TAKE A STAND” PROGRAM



Replace your current bag and liner system with Medline quality bags and liners and receive our durable hamper stands free in exchange for your business! If you own your own stands, we’ll replace them when needed.

It’s that easy! Simply discuss your monthly usage of bags and liners with your sales rep to determine how many stands your facility will need.

Our durable hamper stands offer:

- Convenient foot-pedal operation
- Poly-coated metal cover (controls odor and cross contamination)
- Plastic-coated rings to hold bags in place
- Bilingual caution stickers
- Durable 1" chrome-plated steel construction
- Four 3" ball-bearing swivel casters (two locking)
- Three-year warranty on materials and workmanship

ITEM NUMBER	DESCRIPTION
MDS80529	Covered rectangular hamper stand



## Low-Density Black and Clear

Low-density bags feature maximum puncture and tear resistance. They are manufactured in a wide range of sizes and are suitable for a variety of applications.

ITEM NUMBER	SIZE	COLOR	CAPACITY	PACKAGING
<b>LIGHT (.35 MIL)</b>				
NON022205C	12" x 8" x 22"	clear	7 gal	1000/cs
NON022207	24" x 23"	clear	10 gal	500/cs
NON022208	24" x 23"	black	10 gal	500/cs
NON022212	24" x 32"	clear	15 gal	500/cs
NON022210	24" x 32"	black	15 gal	500/cs
<b>MEDIUM (.45 MIL)</b>				
NONCRC32M	24" x 32"	clear	15 gal	500/cs
NON022220	30" x 36"	black	25 gal	250/cs
NON022220C	30" x 36"	clear	25 gal	250/cs
NON022225	33" x 39"	black	33 gal	250/cs
NON022225C	33" x 39"	clear	33 gal	250/cs
<b>HEAVY (.65 MIL)</b>				
NONCXC32H	24" x 32"	clear	15 gal	500/cs
NONCXC36H	30" x 36"	clear	25 gal	250/cs
NONCXB36H	30" x 36"	black	25 gal	250/cs
NON022228	33" x 39"	black	33 gal	250/cs
NON022231	40" x 46"	black	45 gal	125/cs
NON022231C	40" x 46"	clear	45 gal	125/cs
NON022245C	36" x 58"	clear	55 gal	100/cs
<b>CART LINERS (.80 MIL)</b>				
NON022290	60" x 30" x 75"	clear	n/a	160/rl
NON022291	45" x 27" x 48"	clear	n/a	100/rl
<b>EXTRA HEAVY</b>				
<b>1.0 MIL</b>				
NONTGG32	24" x 32"	black	15 gal	250/cs
NONPXC39X	33" x 39"	clear	33 gal	250/cs
<b>1.1 MIL</b>				
NONPXC46X	40" x 46"	clear	45 gal	125/cs
NONTGG46X	40" x 46"	black	45 gal	125/cs
NONPXC57X	37" x 57"	clear	55 gal	100/cs
NONTGG58X	38" x 58"	black	60 gal	100/cs
<b>1.5 MIL</b>				
NONTGG39XH	33" x 40"	black	33 gal	100/cs
NONPXC46XH	40" x 46"	clear	45 gal	100/cs
NONTGG46XH	40" x 46"	black	45 gal	100/cs
NONTGG58XH	38" x 58"	black	60 gal	100/cs
<b>2.0 MIL</b>				
NON022237	40" x 46"	clear	45 gal	100/cs
NONTGG46XXH	40" x 46"	black	45 gal	100/cs





### High-Density

High-density liners are a great choice for soft refuse (typical office, restroom, paper, etc.). High-density liners are not only stronger, they offer a cost savings over traditional low-density products.

ITEM NUMBER	SIZE	THICKNESS	CAPACITY	PACKAGING
<b>CLEAR</b>				
NONCHD24LC	24" x 24"	6 mic	10 gal	1000/cs
NONCHD24MC	24" x 24"	8 mic	10 gal	1000/cs
NONCHD33LC	24" x 33"	6 mic	15 gal	1000/cs
NONCHD33MC	24" x 33"	8 mic	15 gal	1000/cs
NONCHD3710C	30" x 37"	10 mic	25 gal	500/cs
NONCHD37HC	30" x 37"	12 mic	25 gal	500/cs
NONCHD37XC	30" x 37"	16 mic	25 gal	500/cs
NONCHD40MC	33" x 40"	10 mic	33 gal	500/cs
NONCHD40HC	33" x 40"	12 mic	33 gal	500/cs
NONCHD40XC	33" x 40"	16 mic	33 gal	250/cs
NONCHD40STC	33" x 40"	22 mic	33 gal	250/cs
NONCHD48HC	40" x 48"	13 mic	45 gal	250/cs
NONCHD48STB	40" x 48"	22 mic	45 gal	150/cs
NONCHD47HC	43" x 48"	14 mic	50 gal	200/cs
NONCHD60HC	36" x 58"	13 mic	55 gal	200/cs
NONCHD62XC	38" x 58"	17 mic	60 gal	200/cs
<b>BLACK</b>				
NONCHD48HB	40" x 48"	13 mic	45 gal	250/cs
NONCHD48STB	40" x 48"	22 mic	45 gal	150/cs

### High-Density Clear Liners on Coreless Rolls

Coreless rolls are easier to store and distribute. They also offer better accountability and are ideal for use on carts.

ITEM NUMBER	SIZE	THICKNESS	CAPACITY	PACKAGING
NONHCR24LC	24" x 24"	6 mic	10 gal	20/50s
NONHCR24MC	24" x 24"	8 mic	10 gal	20/50s
NONHCR33MC	24" x 33"	8 mic	15 gal	20/50s
NONHCR3710C	30" x 37"	10 mic	25 gal	10/20s
NONHCR40HC	33" x 40"	12 mic	33 gal	10/20s
NONHCR40XC	33" x 40"	16 mic	33 gal	10/25s
NONHCR48HC	40" x 48"	13 mic	45 gal	10/25s
NONHCR48XC	40" x 48"	16 mic	45 gal	10/25s
NONHCR60XC	36" x 60"	17 mic	55 gal	10/20s





## Red Liners

Medline's red liners are printed with the universal biohazard symbol and "Infectious Waste" in English and Spanish. All low-density bags meet the 165-gram Dart Drop Test (ASTM-D1709-85) and 480-gram Elmendorf Tear Test (ASTM-D1922-67).

ITEM NUMBER	SIZE	THICKNESS	CAPACITY	PACKAGING
<b>LOW DENSITY</b>				
NON122424	24" x 24"	1.2 mil	10 gal	500/cs
NON122433	24" x 33"	1.2 mil	15 gal	250/cs
NON123036F	30" x 37"	1.2 mil	25 gal	250/cs
NON123143	31" x 43"	1.2 mil	33 gal	200/cs
NON123848	40" x 46"	1.2 mil	45 gal	100/cs
NON151212*	12" x 12"	2.0 mil	1 gal	1000/cs
NON151717	17" x 17"	1.5 mil	4 gal	500/cs
NON152426	24" x 26"	1.5 mil	10 gal	200/cs
NON153044	30" x 44"	1.5 mil	33 gal	100/cs
NON154046	40" x 46"	1.5 mil	45 gal	100/cs
NON203143	31" x 43"	2.0 mil	33 gal	100/cs
NON204046	40" x 46"	2.0 mil	45 gal	100/cs
NON304046	40" x 46"	3.0 mil	45 gal	50/cs
NON304055	40" x 55"	3.0 mil	55 gal	50/cs
* indicates zip closure				
<b>HIGH DENSITY</b>				
NONHDR24RL	24" x 24"	13 mic	10 gal	1000/cs
NONHDR43	31" x 43"	14 mic	14 mic	250/cs
NONHDR48	40" x 48"	17 mic	17 mic	250/cs



## Yellow Liners

Yellow liners are printed with the universal biohazard symbol and "Infectious Waste" in English and Spanish. All are low density.

ITEM NUMBER	SIZE	THICKNESS	CAPACITY	PACKAGING
NON024042	31" x 43"	1.1 mil	33 gal	100/cs
NON024046	40" x 46"	1.5 mil	45 gal	100/cs
NON024048	31" x 41"	1.5 mil	33 gal	250/cs



## Soiled-Linen Liners

Printed with "Soiled Linen" in English and Spanish.

ITEM NUMBER	SIZE	THICKNESS/COLOR	CAPACITY	PACKAGING
<b>LOW DENSITY</b>				
NON023143	29" x 42"	1.1 mil, blue	33 gal	200/cs
NON02221658	23" x 16" x 58"	1.5 mil, blue	60 gal	100/cs
NON023143MG	29" x 43"	1.1 mil, mint green	33 gal	200/cs
<b>HIGH DENSITY</b>				
NONHDB43	31" x 43"	17 mic, blue	33 gal	250/cs
NONHDB48	40" x 48"	17 mic, blue	45 gal	250/cs



### Drawstring Bags

These bags allow just enough air to escape so they don't explode when dropped down laundry chutes. Printed with "Soiled Linen" in English and Spanish unless otherwise noted.



ITEM NUMBER	SIZE	THICKNESS	CAPACITY	PACKAGING
<b>BLUE</b>				
NON022939	29" x 41"	1.1 mil	33 gal	200/cs
NON022938	29" x 41"	1.5 mil	33 gal	150/cs
NON022937	29" x 41"	2.0 mil	33 gal	100/cs
<b>WHITE (UNPRINTED)</b>				
NON022939WH	29" x 41"	1.1 mil	33 gal	200/cs
<b>WHITE (PRINTED)</b>				
NON022948	29" x 42"	1.5 mil	33 gal	150/cs

### White Liners

Liners are also available in white to help you color coordinate your waste by floor or department.

ITEM NUMBER	SIZE	THICKNESS	CAPACITY	PACKAGING
NON022250	12" x 8" x 22"	1.0 mil	7 gal	500/cs
NONXPW46X	40" x 46"	.8 mil	45 gal	100/cs
NONXBW46X	40" x 46"	1.5 mil	45 gal	100/cs
NON022248	38" x 58"	.85 mil	60 gal	100/cs

### Sani-Melt Water-Soluble Bags

Water-soluble bags — designed to isolate soiled or contaminated linen — are a great way to manage dirty or infected laundry while protecting your staff! Clear bags can be washed along with linen contents. Bag ties dissolve at 40°F, the bag itself dissolves in hot water flush at 140°F.

- Hold wet or damp linen for hours without rupturing
- Go into the laundry with other contents, no sorting
- Bags are anti-static, non-toxic and fully biodegradable



ITEM NUMBER	DESCRIPTION	PACKAGING
NON02800	26" x 33"	100/cs
NON02825	28" x 39"	100/cs
NON02850	36" x 39"	100/cs

### Scented Liner Freshens Up Any Area

Our white low-density liner has a pleasant baby powder scent to reduce odors caused by incontinence, food scraps, etc.

ITEM NUMBER	DESCRIPTION	PACKAGING
NON022249	31" x 43", 33 gal, 1.0 mil	200/cs







### Blockade Bags

Our most popular reusable bag

- 100 percent polyester
- 100 percent fluid resistant
- OSHA compliant when transporting lightly soiled linens
- Retain fluid-resistant properties for 75 processing
- Low cost per use
- Feature straight bottom, bound side seams and dumping loops
- Available in 18" (30" x 40"), 25" (40" x 40") and chairback (27" x 35") styles

ITEM NUMBER	DESCRIPTION	PACKAGING
MDT021353	18" flip top with elastic, yellow	1 dz/cs
MDT021373	18" flip top with elastic, gray	1 dz/cs
MDT021375	18" flip top with elastic, ciel blue	1 dz/cs
MDT021354	25" flip top with elastic, yellow	1 dz/cs
MDT021374	25" flip top with elastic, gray	1 dz/cs
MDT021377	25" flip top with elastic, ciel blue	1 dz/cs
MDT021370	Chairback style, gray	1 dz/cs
MDT021366	Chairback style, yellow	1 dz/cs

### Our 200 Denier Nylon Bags

Great for dry linens and personal belongings

- Choose from drawcord or flip top with elastic closures
- 18" and 25" bags feature round bottom and dumping loops
- Chairback style is available with flip top closure and straight bottom
- Also available in red, royal, navy, kelly green, forest green and yellow

ITEM NUMBER	DESCRIPTION	PACKAGING
MDT021348	18" drawcord, white	2 dz/cs
MDT021363	18" flip top with elastic, white	2 dz/cs
MDT021349	25" drawcord, white	2 dz/cs
MDT021364	25" flip top with elastic, white	2 dz/cs
MDT021344	Chairback style, white	2 dz/cs



### Made-to-Order Cart Covers

Keep your carts and contents clean

- Custom made to your exact specifications
- Available in 200 denier, 400 denier and antimicrobial vinyl
- Vinyl is the most durable and can be wiped down with cleaner
- Nylon can be laundered
- Covers have full flaps
- Reinforced corners and double-needle construction for extra durability
- Your choice of heavy-duty zippers or hook-and-loop closure

Ask your Medline sales representative for more details.

## DISINFECTANTS



### A Maxima® 128

Maxima 128 is a hospital-grade, EPA-registered quarternary germicidal detergent. Its label claims include VRE, MRSA, Hepatitis B and USDA C1 with a high dilution rate. It cleans, disinfects and deodorizes all hard surfaces, including glass, floors, walls, bright work, bathrooms and more. Unlike alkaline-based products, it won't damage or dull surfaces over time. Plus, it doesn't film or leave water spots. Maxima 128 smells great and is gentler on skin than many other cleaners. Per diluted use, it is extremely economical, too – 1:128.

ITEM NUMBER	DESCRIPTION	DILUTION RATE	PACKAGING
BRI16104104	Maxima 128	1:128	4 gl/cs
BRI16104207	Maxima 256	1:256	2-2.5 gl/cs

### B Non-Acid Bathroom Cleaner

This green, non-acid disinfectant bathroom cleaner is ready to use — no mixing, no measuring. The one-step, ready to use, non-acid formulation is ideal for daily use in toilet bowls, urinals and on all washable restroom surfaces.

ITEM NUMBER	DESCRIPTION	PACKAGING
BRI20100720	32 oz	12/cs

### C Glass and Surface Cleaner

Ready to use and fast acting, this glass cleaner is perfect for routine multi-surface cleaning. It won't film or streak and its low-odor formula dries quickly.

ITEM NUMBER	DESCRIPTION	PACKAGING
BRI201014Q3	32 oz	12/cs
BRI20100904	1 gal	4/cs



**D Stainless Steel Cleaner**

This lemon-scented cleaner cleans and polishes mirror- or satin-finish stainless steel in one simple step.

ITEM NUMBER	DESCRIPTION	PACKAGING
BRI50ST1250	15 oz	12/cs

**E Creme Cleanser with Mild Abrasive for Tough Jobs**

Formula 71 removes soil buildup, rubber marks and soap scum, and is formulated with a mild abrasive to attack stubborn spots. The cleanser cleans and deodorizes and then rinses away, leaving no residue.

ITEM NUMBER	DESCRIPTION	PACKAGING
BRI16100820	32 oz	12/cs

**F BOWLETTE®**

Easily removes rust, scale and lime deposits. This ready-to-use, economical product is designed for the cleaning of toilet bowls and urinals and is phosphoric/hydrochloric-based.

ITEM NUMBER	DESCRIPTION	PACKAGING
BRI20100120	1 quart bottle	12/cs

**G Bac Zap™ Neutralizes Urine Odors**

Bac Zap is an extremely effective liquid odor counteractant that neutralizes urine malodors by digesting the source. This ready-to-use liquid formula can be used as is or added to carpet shampoos and cleaners.

ITEM NUMBER	DESCRIPTION	PACKAGING
BRI18101220	1 quart bottle	12/cs

**H Bru-Clean TbC™ Kills TB and C.diff**

Bru-Clean TbC is a unique pre-measured tablet that not only cleans and disinfects but is effective against TB and C.diff as well. Use Bru-Clean TbC to eliminate corrosive bleach or harsh phenolic disinfectants in your healthcare facility.

ITEM NUMBER	DESCRIPTION	PACKAGING
BRI16101588	540 tablets per bottle	2/cs

**Furniture Polish**

This instant-shine furniture polish will help keep your furniture looking new!

ITEM NUMBER	DESCRIPTION	PACKAGING
BRI50IS1250	Instant Shine, 20 oz	12/cs

## DISINFECTANTS



### Dispatch® Disinfectant Spray with Bleach

Powerful disinfectant kills germs in as little as one minute. Dispatch meets OSHA regulations for protection of healthcare workers from bloodborne pathogens and is ideal for everything from PVC to stainless steel. In just 60 seconds, it kills HIV-1, polio, staph, salmonella, pseudomonas, Clostridium difficile (vegetative) and herpes simplex. It also kills mycobacterium tuberculosis in just 30 seconds. Use Dispatch in place of standard 1:10 bleach for superior results. Available in a ready-to-use spray or convenient towels.

ITEM NUMBER	DESCRIPTION	PACKAGING
<b>LIQUID SPRAY</b>		
CLH68967	22 oz spray	8/cs
CLH68970	32 oz spray	6/cs
CLH68832	32 oz pull top	6/cs
CLH68978	128 oz refill	4/cs
<b>TOWELS</b>		
CLH69150	Canister, 150-7" x 8" towels	8/cs
CLH69101	Ind. wrapped 50/bx	6 bx/cs
CLH69260	Flex pack, 9" x 10", 60/pk	12 pk/cs



### Citrex®

Don't Waste Time — Citrex hospital spray disinfectant works fast. Kills TB, HIV, HBV, HCV, staph, salmonella, strep and pseudomonas in two minutes or less; fungicidal in ten minutes. Citrex also prevents mold and mildew regrowth. Odors are eliminated and stay gone because Citrex destroys odor-causing germs at their source.

ITEM NUMBER	DESCRIPTION	PACKAGING
CLH49200	14 oz can	12/cs

### Precise® Hospital Foam Cleaner Disinfectant

Get more spray time. Precise meets OSHA and CDC standards for bloodborne pathogen contamination. Kills HIV, HBV and HCV in one minute. Convenient foam works well on equipment surfaces and works great for cleaning wheelchairs. Spray it on, let it sit for 30 seconds and then wipe clean with ease.

ITEM NUMBER	DESCRIPTION	PACKAGING
CLH40513	20 oz can	12/cs

### Need a Disinfecting Odor Eliminator?

Citrace® destroys odors completely and leaves behind a fresh citrus scent. Citrace kills HIV and HBV in one minute; TB, strep, staph, pseudomonas, salmonella, herpes simplex, influenza, poliovirus, canine parvovirus and vaccinia virus are killed within 10 minutes.

ITEM NUMBER	DESCRIPTION	PACKAGING
CLH49100	14 oz can	12/cs



## The Ultimate in Chemical-Dispensing Technology

The world's smallest and easiest-to-use dilution system gives you complete control over chemical costs!



*This chemical system can be yours for free when you purchase five cases of product!*

- Fifty percent more compact—this unit requires up to 50 percent less wall space than traditional dilution control systems, allowing it to go places others can't.
- One-handed dispensing—simply dial the product you wish to dispense and the system does the rest!
- Dial-in accuracy—just select the chemical you want, and the SCS<sup>2</sup> automatically dilutes the super-concentrate to the exact strength needed.
- Forty-three percent faster bucket fill—5 GPM flow rate is 43 percent faster than the standard 3.5 GPM in competitive units.
- Incredibly accurate dilution ratios—users always have the right concentration.
- Reduced chemical contact—each SCS<sup>2</sup> half-gallon container comes with an integrated, non-removable sipper tube. Splash-free connections are as easy as screwing on a bottle cap.
- Modular design/locking baskets—one dispensing module and two chemical storage modules (12"W x 9.5"H x 8.5"D). Lockable baskets (lock not included). Holds up to three half-gallon containers.

ITEM NUMBER	DESCRIPTION	PACKAGING
BRI19200033	#0 Spring Fresh, smoke and odor remover	4 1/2 gal/cs
BRI19200133	#1 Neutralizer, cleaner	4 1/2 gal/cs
BRI19200333	#3 Maxima 256, disinfectant cleaner	4 1/2 gal/cs
BRI19200433	#4 Blue, glass cleaner	4 1/2 gal/cs
BRI19200533	#5 Restorer, cleaner/maintainer	4 1/2 gal/cs
BRI19200633	#6 Deep cleaner, all-purpose cleaner	4 1/2 gal/cs
BRI19201733	#7 Degreaser, degreaser	4 1/2 gal/cs

## Laundry Supplies Bleach

Regular-strength bleach whitens and brightens with 5.25 percent hypochloride.

ITEM NUMBER	DESCRIPTION	PACKAGING
MPH16CH121	Regular strength bleach	4 gal/cs



## Detergent

ITEM NUMBER	DESCRIPTION	PACKAGING
ARD01912	Purex powder, 113 oz per box	4/cs
LVR2979259	Liquid All, with pump, 2 gallon	2/cs

## Dryer Sheets

Snuggle® dryer sheets leave the wash soft and fresh and eliminate static buildup.

ITEM NUMBER	DESCRIPTION	PACKAGING
LVR625126	Fabric softener, 120 shts/box	6 bx/cs

## Keep Your Floors in Tip-Top Shape

Clean, polished, well-maintained floors speak volumes about your facility. These high-performance products make it easy to keep your floors looking their best, even in high-traffic areas.



### MVP Max® High-Gloss Finish Goes on Crystal Clear...

And stays that way! This finish achieves brilliant gloss while providing the durability to withstand heavy 24/7 traffic. Twenty-two percent active solid.

ITEM NUMBER	DESCRIPTION	PACKAGING
BRI10103204	1 gal	4/cs
BRI10103207	2.5 gal	2/cs

### Spotlight Floor Polish

A spectacular wet-look gloss, high active solids (22 percent) and extreme durability make this our most versatile floor polish.

ITEM NUMBER	DESCRIPTION	PACKAGING
BRI10100804	4 gal	4/cs
BRI10100807	2.5 gal	2/cs

### TerraGreen® is an Extra-Heavy-Duty Power Stripper

An environmentally responsible stripper that removes finishes in one pass. 1:4.

ITEM NUMBER	DESCRIPTION	PACKAGING
BRI36100204	1 gal	4/cs
BRI36100207	2.5 gal	2/cs

### Shattered 99®

This floor stripper reduces on-the-job inventory by transporting less product. Shattered 99 is 1:20 or one quart to five gallons. This makes for less time mixing and more stripping floors. Shattered 99 is our lowest-cost-per-use floor stripper.

ITEM NUMBER	DESCRIPTION	PACKAGING
BRI19301924	6 quart bottles	6/cs

### Instant Replay Cleaner/Maintainer

This is the professional's secret for maintaining consistently high gloss levels. Instant Replay cleans and maintains in a single step. Labor costs are reduced because scrub/recoating and strip-outs will not need to be done as frequently and spray buffing and mop-on relaminators are eliminated.

ITEM NUMBER	DESCRIPTION	PACKAGING
BRI10200604	4-1 gallon bottles	4 gl/cs

### Off Base

Aerosol baseboard stripper.



ITEM NUMBER	DESCRIPTION	PACKAGING
BRI500B1250	20 oz	12/cs

### Bruln Floor Naturalizer

Designed to neutralize floors after stripping. This is an excellent damp mop solution for removing tracked-in winter salt.

ITEM NUMBER	DESCRIPTION	PACKAGING
BRI12100604	1:64	4 gl/cs

### Carpet Sanitizer Plus

Problem soils are instantly and completely emulsified with Carpet Sanitizer Plus. This detergent system removes soils that other cleaners leave behind. Your carpet will be quickly and thoroughly cleaned. This EPA-registered cleaner/sanitizer is a low-foam concentrate that economically dilutes for cleaning and extracting.

ITEM NUMBER	DESCRIPTION	PACKAGING
BRI13101504	1:64	4 gl/cs

### Floor Pads

Premier floor pads are tough, yet gentle. Strip, scrub, buff or polish, these pads are ideal for a variety of uses.

ITEM NUMBER	DESCRIPTION	PACKAGING
LGSPAD20WHI	20" polishing, white	5/cs
LGSPAD20NAT	20" ultra high speed, natural	5/cs
LGSPAD20BLA	20" stripping, black	5/cs
LGSPAD20RED	20" buffing, red	5/cs
LGSPAD20AQU	20" high speed, aqua	5/cs
LGSPAD20BLU	20" scrubbing pad, blue	5/cs
LGSPAD20HIP	20" high performance stripping	5/cs





## DEODORIZERS



### Citrus II® Air Fragrance and Odor Eliminator

The fresh approach to controlling healthcare odors. Environmentally safe, Citrus II eliminates the harsh odors of urine, feces, decubitus ulcers, oncology departments, cancer and diabetic wards, labs and exam rooms. Citrus II is 100 percent natural, so it is safe to use everywhere.

ITEM NUMBER	DESCRIPTION	PACKAGING
MDS092961	1.5 oz	24/cs
MDS092960	4 oz	12/cs
MDS092955	7 oz	12/cs

### Citrus II Hospital Germicidal Deodorizing Cleaner

Citrus II cleans, deodorizes and disinfects non-porous surfaces, equipment and non-critical instruments. It is effective against a broad spectrum of microbes including TB, HIV-1, staphylococcus aureus (including MRSA), VRE, salmonella, Hepatitis B and C, E. coli, mold and more.

ITEM NUMBER	DESCRIPTION	PACKAGING
MDS092980	22 oz	12/cs

### Ozium 21® Air Sanitizer

Airborne bacteria is reduced and smoke and other odors are eliminated. Original scent.

ITEM NUMBER	DESCRIPTION	PACKAGING
MDS092965	21 gm Ozium	12/cs

### Metered Dry Deodorizer

This measured spray completely eliminates unpleasant odors and leaves a clean, fresh scent in the air, deodorizing up to 6000 cubic feet. Features a universal spray tip for use in most dispensers.

ITEM NUMBER	DESCRIPTION	PACKAGING
CHU5169	Mulberry, 7 oz	12/cs
CHU5318	Spring Linen, 7 oz	12/cs
CHU5188	Apple Blossom, 7 oz	12/cs
CHU5192	Mango, 7 oz	12/cs
More scents available – Ask your Medline rep details		

### Automatic Metered Aerosol Dispenser

This model provides both functional and aesthetic performance. It features empty-can and low-battery LED warning lights, 7.5-, 15- and 30-minute interval settings, easy access can door, battery door and a keyless lock. Six decor strips are included for tailoring to match interior decor. Color: Beige/Gray

ITEM NUMBER	DESCRIPTION	PACKAGING
MPH17AT00995	Dispenser	ea





### Loop-End Mop or Cut-End Mop?

Our loop-end mops last longer and perform better than cut-end mops. They are made from a single continuous strand of yarn, so they won't fray or unravel. They feature tail bands that keep yarns in place for even, increased floor coverage. And you can launder them again and again for longer life and better hygiene. The mops are available in three sizes, so each member of your housekeeping crew can use a correctly proportioned mop.

The difference is in the mop! Regular dust control will contribute to a healthier environment, improve your facility's appearance and ultimately save you time and money.

All are loop-end, balanced-blend mops unless otherwise noted.

ITEM NUMBER	DESCRIPTION	PACKAGING
GSC71301	Small, 12 oz, natural	12/cs
GSC71501	Small, 12 oz, blue	12/cs
GSC70601	Small, 12 oz, green	12/cs
GSC71302	Medium, 16 oz, natural	12/cs
GSC71502	Medium, 16 oz, blue	12/cs
GSC70602	Medium, 16 oz, green	12/cs
GSC71702	Medium, 16 oz, orange	12/cs
GSC71303	Large, 24 oz, natural	12/cs
GSC71503	Large, 24 oz, green	12/cs
GSC60716	4-ply rayon, medium, 16 oz	12/cs
GSC60112	Cut end, cotton, small, 12 oz	12/cs

### Quick-Release 60" Plastic Jaw Handle

The jaw holds the mop head firmly in place. Ideal for 5"-wide headband mop heads. Vinyl-covered yellow aluminum handle.

ITEM NUMBER	DESCRIPTION	PACKAGING
LGSLBI610	15/16" dia x 60"	ea

### 60" Plastic Quick-Change Handle

A hinged side latch with roller adjustment makes for easy loading and unloading. Fits mop heads and has a vinyl-covered aluminum yellow handle.

ITEM NUMBER	DESCRIPTION	PACKAGING
LGSLBI620	15/16" dia x 60"	ea





### Bucket System

The WaveBrake® mop bucket and wringer system reduces splashing, which makes for a safer environment, cleaner floors and improved productivity.

ITEM NUMBER	DESCRIPTION	PACKAGING
RUB758088	35 qt, yellow or brown	ea
RUB758888	35 qt, blue, red or green	ea

### Dirty Water Bucket

This bucket nests below the WaveBrake wringer to collect the dirty water and separate it from the cleaning solution, reducing the risk of cross contamination.

ITEM NUMBER	DESCRIPTION	PACKAGING
RUB9C74	18 qt, fits 35 qt bucket	6/cs



### Microfiber Press Wring Bucket

Offers no-touch wringing of microfiber mops.

- Ergonomic, no bending or pulling
- Bucket fits into the RUB6173 janitorial cart and can accommodate pads up to 18" in length.
- Washboard surface effectively removes dirt and debris from mop pads before wringing.

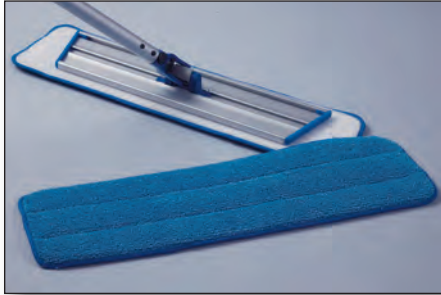
ITEM NUMBER	DESCRIPTION	PACKAGING
RUBQ90088	Press wring bucket	ea



### Medline MicroMax Microfiber Wet Mop

This wet mop has double-layered construction with an outer layer of 100 percent twisted microfiber design made of 100 percent polyester and 80 percent polyester/20 percent polyimide fibers. The inner layer is made of high-density foam for increased absorption.

- Can be washed up to 140°F
- Lasts through 250-300 washes



ITEM NUMBER	DESCRIPTION	PACKAGING
MDT217620	18" wet mop, blue	100/cs
MDT217620Z	18" wet mop, blue	25/bx
MDT217621	24" wet mop, blue	12/bx



### Medline Advantage Microfiber Wet Mop

The advantage of our Advantage mop is the 100 percent microfiber in the middle of the pad. The construction of the Advantage is the same as the Micromax, we simply replaced the foam layer with microfiber to make this mop more durable — it lasts through approximately 500 washings.

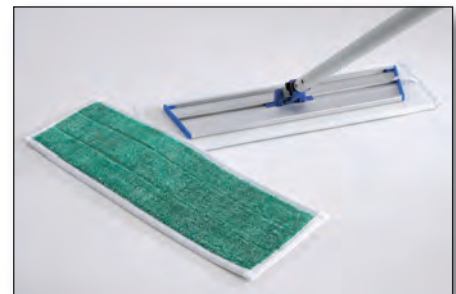
ITEM NUMBER	DESCRIPTION	PACKAGING
MDT217775	18" Advantage microfiber pad	100/cs
MDT217775Z	18" Advantage microfiber pad	25/bx

### Medline MicroMax Microfiber Dust Mop

Dust and dirt don't stand a chance. The sheared fiber outer-layer construction of this dust mop means more effective dusting. It is constructed with 100 percent polyester and 80 percent polyester/20 percent polyimide fibers. High-density foam in the inner layer increases stability.

- Can be washed up to 140°F

ITEM NUMBER	DESCRIPTION	PACKAGING
MDT217630	18" dust mop, green	100/cs
MDT217630Z	18" dust mop, green	25/cs
MDT217631	24" dust mop, green	6/bx



## MICROFIBER



### Medline MicroMax Microfiber Telescoping Mop Handle

Ergonomically friendly. This mop handle is made of lightweight aluminum that adjusts from 39" up to an ergonomically ideal 70". The quick-disconnect system allows multiple-sized heads to be used.

ITEM NUMBER	DESCRIPTION	PACKAGING
MDT217605	Size: 39" closed, 70" extended	25/cs
MDT217605Z	Size: 39" closed, 70" extended	5/bx
MDT217605Z1	Size: 39" closed, 70" extended	ea



### MicroMax Microfiber Mop Frame

These aluminum mop frames come with rotating swivel heads for multidirectional movement. If desired, the mechanism can be locked in place for two-directional movement.

ITEM NUMBER	DESCRIPTION	PACKAGING
MDT217610	18" mop head	10/cs
MDT217610Z	18" mop head	5/bx
MDT217610Z1	18" mop head	ea
MDT217611	24" mop head	10/cs



### Medline MicroMax Microfiber Mop Bucket

Durable and featuring high-quality plastic construction, the MicroMax Microfiber mop bucket holds up to 20 each of 18" MicroMax or MicroMax G2 mops. They lay flat, eliminating the need for staff to roll up the mops and wring them out manually. Plastic dividers keep wet mops in place.

ITEM NUMBER	DESCRIPTION	PACKAGING
MDT217600	20" W x 10" H x 10" D bucket, yellow	2/cs
MDT217608	Complete set: bucket, casters, strainer	2/cs
MDT217603	20" W x 10" H x 10" D bucket, blue	2/cs

### Microfiber Starter Kit

A perfect introduction! Our Starter Kit is ideal for those who either have a small area or just want to try out the system. Includes all items listed below.

ITEM NUMBER	DESCRIPTION	KIT CONTENTS
MDT217699	MicroMax pad	10 ea
	Telescoping handle	1
	Mop head	1
	Cleaning cloths	10 ea
	High duster	1
	Finish mop	1



### Rubbermaid® Cleaning Cart Holds It All

This Rubbermaid cleaning cart neatly holds tools, handled equipment, a dustpan, broom, two floor signs — and there’s even a holder for a mop handle. It’s built to withstand tough daily use, with a built-in bumper to protect walls and furniture.

ITEM NUMBER	DESCRIPTION	PACKAGING
RUB6173	Cleaning cart	ea
RUB6181	Locking cabinet	ea
RUB6183	Replacement yellow bag	ea

### Heavy-Duty Utility Cart

Perfect for transporting equipment and heavy loads in any environment. Sturdy construction won’t rust, dent, chip or peel. The cart is lightweight, easy to maneuver and can hold up to 200 lbs or 500 lbs.

ITEM NUMBER	DESCRIPTION	PACKAGING
RUB4520	2-shelf, 500 lb capacity	ea
RUB342488	3-shelf, 200 lb capacity	ea

### TownLine Wire Folding Utility Cart

Our folding utility cart is one of the most popular and versatile carts in healthcare facilities. Features chrome-plated frame, 4" rubber ball bearing casters and a 50 lb capacity. Poly-coated wire baskets are sold separately.



ITEM NUMBER	DESCRIPTION	PACKAGING
MDRM510440	Folding utility cart	ea
MDRM51044612	Wire baskets — 1-6", 1-12"	ea



## Put Safety First with Medline's Safety Collection

Keep employees, residents and visitors safe with our wide range of indispensable safety products. According to the National Safety Council, slip, trip and fall accidents account for nearly 7,000 deaths per year.



### There's No Mistaking Our Wet Floor Sign

Our sturdy plastic sign offers warnings in both English and Spanish and folds flat for storage and easy transport.

ITEM NUMBER	DESCRIPTION	PACKAGING
NPSWF06	Wet floor sign	6/cs



### Eye/Face Wash Station

This durable plastic station holds two 16-oz bottles of saline solution. The wide-mouth bottles provide initial flushing for alkali and acid splash. Safety sealed and dated to guard against contamination. Complies with ANSI Z358.1-1990 safety standards for personal eyewash stations.

ITEM NUMBER	DESCRIPTION	PACKAGING
MPH17M10300	Eye/face wash station	ea

### Spill Cleanup Kit and Deluxe Spill Cleanup Kit

Standard kit includes one pair non-latex gloves, one biohazard bag, two twist ties, one scoop with scraper, two grams of absorbent powder, one wipe, one disinfectant wipe and one instruction page.

ITEM NUMBER	DESCRIPTION	PACKAGING
MPH17CE210	Spill kit, standard	36 kits/cs

Deluxe kit includes same items as above in addition to one mask with faceshield, one gown, one apron, and eight grams of absorbent powder instead of two grams.

ITEM NUMBER	DESCRIPTION	PACKAGING
MPH17CD410	Spill kit, deluxe	6 kits/cs



According to CDC guidelines, in order to lower the risks of nosocomial (healthcare settings acquired) infections, it is strongly recommended (Category IA) to provide your personnel with:

- Instant hand sanitizer, which should be used during the entire day between patients, before and after eating or using the restroom
- Soap and water, which should be used when the hands look visibly soiled or dirty
- Moisturizing lotion, to avoid skin cracks (where bacteria can sit and be difficult to remove)



### Epi-Clenz®

Incorporating Epi-Clenz instant hand sanitizer into your facility's hand-washing procedures helps you meet the CDC guidelines. Epi-Clenz is an essential germ-killing aid for your employees when soap and water are not readily available. Contains ethyl alcohol and moisturizers to clean hands as it kills 99.99 percent of the most common disease-causing germs. With aloe vera and vitamin E to soothe the skin.

ITEM NUMBER	DESCRIPTION	PACKAGING
<b>GEL</b>		
MSC097030	4-oz gel, flip-top	24/cs
MSC097031	14-oz freesia-scented gel, flip top	24/cs
MSC097032	16-oz gel, with pump	12/cs
MSC097033	16-oz freesia-scented gel, with pump	12/cs
MSC097034N	1.5-oz personal size	48/cs
MSC097034L	Safety lanyard for personal Epi-Clenz gel, asstd. colors	25/cs
MSC097034CL	Retractable clip for Epi-Clenz personal bottle, asstd. colors	25/cs
<b>LOTION</b>		
MSC097024	4 oz lotion with flip top	48/cs
MSC097026	16 oz lotion with pump	12/cs
<b>WALL BRACKET FOR 16 OZ GEL</b>		
MSC097036	Wall bracket for 16 oz Epi-Clenz bottles	12/cs
<b>FOAM</b>		
MSC097040	8 oz can Epi-Clenz foam	24/cs
MSC097042	16 oz can Epi-Clenz foam	12/cs
<b>WALL BRACKETS FOR FOAM</b>		
MSC097045	Wall bracket, 8 oz foam can	24/cs
MSC097046	Wall bracket, 16 oz foam can	12/cs



### Medline Protection Plus® Instant Hand Sanitizer

Fights germs between hand washes. In a healthcare setting, workers must be prepared for any situation, anywhere within a facility. Medline Protection Plus Instant Hand Sanitizer with 62 percent ethyl alcohol is an excellent germ-fighting solution when workers are in the midst of a cleanup but are not near soap and water.

ITEM NUMBER	DESCRIPTION	PACKAGING
MSC098600	800 ml bag	12/cs
S-N800DF	Dispenser for 800 ml and 1000 ml bags	6/cs

### Medline Protection Plus Moisturizing Lotion

CHG and latex-friendly. Constant washing can leave a healthcare professional's skin dry, rough and irritated. Medline's Protection Plus Moisturizing Lotion is non-greasy and fragrance-free. It nurtures and soothes the skin with colloidal oatmeal, aloe vera and vitamin E. It also has dimethicone and allantoin to help retain skin's moisture.

ITEM NUMBER	DESCRIPTION	PACKAGING
MSC098502	2 oz	36/cs
MSC098504	4 oz	36/cs
MSC098508	8 oz w/pump	36/cs
MSC098510	1000 mL bottle	8/cs
MSC098500	800 mL bag	12/cs
MSC098534CS	1000 mL bag	10/cs
9950MED	Dispenser for MSC098500, fits 800/1000 mL bags, white	12/cs

### New Duraview® Soap-Dispensing System

Easy on the eye and your budget. This convenient system is economical as well as aesthetically pleasing. It's graduated, so you can control the dispensing rate. Its larger sizes mean less work for housekeeping staff. Once one cartridge is empty, the upper cartridge is replaced, providing a perpetually new look for your facility. Available as an antimicrobial soap, skin cleanser, shampoo and body wash.



ITEM NUMBER	DESCRIPTION	PACKAGING
<b>ANTI-MICROBIAL SOAP, AMBER, 0.3% TRICLOSAN</b>		
KUT5067	Citrus spice fragrance, 2000 mL bag	4/cs
<b>SKIN CLEANSER, PINK, FRESH FRAGRANCE</b>		
KUT5667	2000 mL bag	4/cs
KUT5668	4500 mL bag	2/cs
<b>SHAMPOO/BODY WASH, BLUE, ALOE FRAGRANCE</b>		
KUT7567	2000 mL bag	4/cs
KUT7568	4500 mL bag	2/cs
<b>WALL BRACKET FOR DURAVIEW SYSTEM</b>		
KUTDURA	2000 or 4500 mL	ea



**Medline Protection Plus Soap**—Our Protection Plus line offers high-quality, cost-effective soaps designed for frequent daily use.



**Medline Protection Plus Enriched Lotion Soap**

Our lotion soap is designed to redeposit some of the moisture that is typically lost with constant hand washing. Formulated with mild cleansing agents and moisturizing emollients, Protection Plus lotion soap is an all-purpose soap that offers quick, effective cleansing.

ITEM NUMBER	DESCRIPTION	PACKAGING
MSC098100	800 mL bag	12 ea/cs
MSC098105	Gallon	4 ea/cs
MSC098104	4 oz	24 ea/cs
MSC098112	7.5 oz w/pump	12 ea/cs

**Medline Protection Plus Antimicrobial Soap**

This is a great cost-effective soap for use throughout your facility. Our antimicrobial soap with Triclosan is effective against gram-positive and gram-negative bacteria, yeast and mold. Its unique formulation makes Protection Plus antimicrobial soap gentle enough for frequent everyday use.

ITEM NUMBER	DESCRIPTION	PACKAGING
MSC098200	800 mL bag	12/cs
MSC098205	Gallon	4/cs
MSC098204	4 oz	24/cs
MSC098212	7.5 oz w/pump	12/cs
MSC098201	Lotion soap, antimicrobial, 800 mL bag	12/cs



**Protection Plus Hair and Body Shampoo**

This gentle, all-purpose golden liquid soap for body and hair is the perfect alternative to messy bar soaps in shower/bathing areas. Luxurious lather provides mild cleansing with a refreshing scent, leaving hair and skin soft and smooth. Closed-delivery system greatly reduces the risk of cross-contamination as well as the costs associated with bar soap waste.



ITEM NUMBER	DESCRIPTION	PACKAGING
MSC098300	800 mL bag	12/cs
MSC098312	7.5 oz with pump	12/cs
MSC098314	16 oz with pump	12/cs
MSC098305	Gallon	4/cs
S-N800DF	Dispenser for 800 mL and 1000 mL bags	6/cs



### EZ Foam®

The easy solution for every hand soap need! The EZ Foam system offers a clean, contemporary dispenser with a unique push pad that dispenses .75 mL of rich foam per push versus 1.5 mL per push with most bag-in-box systems. This provides twice the number of hand washings! In addition to the dynamic design, we offer three different formulas, all of which produce thick, rich foam: Luxury Hand Soap, with a pleasant tropical scent, is perfect for general applications; Foaming Hair and Body Shampoo with fragrance and light conditioning; and Antibacterial Hand Soap with spring citrus fragrance. All formulations include aloe vera and vitamin E.

ITEM NUMBER	DESCRIPTION	PACKAGING
KUT69041MED	Foaming luxury hand soap, 1000 mL bag	6/cs
KUT64141MED	Enriched moisture wash soap	6/cs
KUT68041MED	Foaming hair and body shampoo, 1000 mL bag	6/cs
KUT68941MED	Foaming antimicrobial soap, 1000 mL bag	6/cs
KUT68241MED	Foaming non-flammable instant hand sanitizer, 1000 mL bag	6/cs
KUT9941GRA	Dispenser for foaming soap	ea

### Clean Shape® Line

Provides 33 percent more uses per bottle than liquid soap. For the best in foaming hand care products, look no farther than the popular Clean Shape line. Clean Shape combines the convenience and hygiene of disposable containers with the style of premium fixtures. Wall bracket available for added convenience and security.

ITEM NUMBER	DESCRIPTION	PACKAGING
KUT65036	Liquid antimicrobial soap, 1000 mL	8/cs
KUT68978	Foaming antimicrobial soap, 950 mL	4/cs
KUT69078	Luxury foaming soap, 950 mL	4/cs
KUT950WB	Wall bracket for Clean Shape bottle	ea



### Fire-Resistant Wastebaskets

These wastebaskets aren't just durable and versatile — they're fire-resistant, too. They won't burn, melt or contribute to fires under normal burning paper conditions. They're easy to clean and available in your choice of three sizes for a coordinated look throughout your facility. The wastebaskets listed below conform to performance test UL242.



ITEM NUMBER	DESCRIPTION	PACKAGING
MABMB8	8 quart, sand	6/cs
MABMB14	14 quart, sand	6/cs
MABMB27	27 quart, sand	6/cs

### Plastic Step-On Trash Cans

Your staff will appreciate the convenience of our dependable, hands-free trash cans. Constructed with a leak-proof base that helps contain liquids and a heavy-duty foot pedal that holds up to frequent use. Choose from four sizes. CSFM and FM approved.



ITEM NUMBER	DESCRIPTION	PACKAGING
RUB6143	8 gal, white or beige	ea
RUB6144BEI	12 gal, beige	ea
RUB6144RED	12 gal, red	ea
RUB6144WHI	12 gal, white	ea
RUB6145	18 gal, beige, white or red	ea
RUB6146	23 gal mobile, red, white or beige	ea

### Strong and Stable Round Trash Containers

These rugged trash containers are built for performance from the double-ribbed base (for added stability) to the reinforced rim (for extra durability). Seamless, all-plastic construction eliminates peeling, chipping and rusting. With built-in handles for easy lifting and dragging. Available in a range of sizes. Specify color when ordering. Snap-on lid contains germs and odors.\*

ITEM NUMBER	DESCRIPTION	PACKAGING
RUB2610	10 gallon, white or gray	ea
RUB2620	20 gallon, white, gray, yellow or blue	ea
RUB2632	32 gallon, gray, yellow, blue or red	ea
RUB2643	44 gallon, white, gray, yellow, blue or red	ea
RUB2640Z	Dolly for 2620, 2632 and 2643	ea

\* Call us for information on the lids for these containers. Lids are sold separately.





## WASTE RECEPTACLES



### Step Cans Allow Hands-Free Waste Disposal

These institutional-quality waste receptacles are OSHA- and OBRA-compliant and are UL listed/FM approved as fire-safe and self-extinguishing. Foot pedal operation means your hands never touch the can. Square models feature retainer bands to hold poly bags securely within unit. Rigid plastic liners are also available.

#### Stainless steel finish with rigid poly liner

ITEM NUMBER	DESCRIPTION	PACKAGING
UNMST35SSPL	3 gal, 11" dia x 17" H	ea
UNMST7SSPL	7 gal, 12" sq x 17" H	ea
UNMST12SSPL	12 gal, 12" sq x 23" H	ea
UNMST24SSPL	24 gal, 15" sq x 30" H	ea
UNMST40SSPL	40 gal, 19" sq x 30" H	ea
UNMST40SWPL	40 gal w/wheels, 19" sq x 30" H	ea

#### Stainless steel finish with wheels

- With poly bag retainer bands
- May also be used with rigid plastic liners

ITEM NUMBER	DESCRIPTION	PACKAGING
UNMST40SWRB	40 gal w/wheels, 19" sq x 30" H	ea

#### Powder-coated finish

- Rigid poly liner in red or white

ITEM NUMBER	DESCRIPTION	PACKAGING
UNMST35EPL	3 1/2 gal, 11" dia x 17" H	ea
UNMST7EPL	7 gal, 12" sq x 17" H	ea
UNMST12EPL	12 gal, 12" sq x 23" H	ea
UNMST24EPL	24 gal, 15" sq x 30" H	ea
UNMST40EWPL	40 gal w/wheels, 19" sq x 30" H	ea

### AKRO® Bins

Looking to get organized? Akro bins are a quick, colorful way to eliminate clutter. Available in your choice of yellow, red, blue or stone. Specify color when ordering.



ITEM NUMBER	DESCRIPTION	PACKAGING
AKM30210	5 2/8" x 4 1/8" x 3"	24/cs
AKM30220	7 3/8" x 4 1/8" x 3"	24/cs
AKM30224	10 7/8" x 4 1/8" x 4"	12/cs
AKM30230	10 7/8" x 5 1/2" x 5"	12/cs
AKM30234	14 3/4" x 5 1/2" x 5"	12/cs
AKM30235	10 7/8" x 11" x 5"	6/cs
AKM30239	10 3/4" x 8 1/4" x 7"	6/cs
AKM30240	14 3/4" x 8 1/4" x 7"	12/cs
AKM30250	14 3/4" x 16 1/2" x 7"	6/cs
AKM30255	10 7/8" x 16 1/2" x 5"	6/cs
AKM30270	18" x 16 1/2" x 11"	3/cs

### Patient Belonging Bags

#### Store and label personal items

These durable bags hold patients' clothing, jewelry, etc. during treatment. Select the snap-close bag with a rigid handle or a drawstring bag. Both can be hung from a wheelchair or gurney during transport to room. Size is 18" x 20" with a 3.5" gusset.

ITEM NUMBER	DESCRIPTION	PACKAGING
NON026330	Drawstring, clear	250/cs
NON026310	Drawstring, white	250/cs
NON026340	Rigid handle, clear	250/cs
NON026320	Rigid handle, white	250/cs

### Respiratory Setup Bag

#### Aids in respirator delivery to patient's room

This clear drawstring bag with blue print is 16" x 12" with a 4" gusset and a space designated for the patient's name and room number.

ITEM NUMBER	DESCRIPTION	PACKAGING
NON026370	12" x 16"	500/cs

### Bedside Bags

#### Act as handy waste receptacles

These disposable bags have two pre-attached, self-adhesive tabs at the top for attaching to bed, over-bed table or any furniture surface.

ITEM NUMBER	DESCRIPTION	PACKAGING
NON024309P	Plastic	2000/cs
NON24309X	Paper	2000/cs

### Sickness Bag

#### Includes graduations on side

Keep these clear plastic bags in patients' rooms to help avoid messes.

ITEM NUMBER	DESCRIPTION	PACKAGING
NON70600	12" x 16"	500/cs

### Heavy-Duty Plastic Clothes Hangers

These rugged tubular hangers are perfect for coats and other heavy items. The multi-ridged bar holds pants neatly and securely.

ITEM NUMBER	DESCRIPTION	PACKAGING
MPH17M6878	Plastic clothes hangers	144/cs



## PILLOWS & SLIPPERS



### Disposable Pillows

These single-patient-use pillows offer the kind of comfort found in more expensive reusable pillows. Disposable pillows are a great way to cut down on laundry costs and reduce cross contamination. Made of flame-retardant, garneted polyester, they come in five sizes and various weights.

ITEM NUMBER	DESCRIPTION	PACKAGING
NON24390	18" x 24", 15 oz fill	12/cs
NON24391	16" x 22", 10 oz fill	12/cs
NON24392	12" x 16", 7 oz fill	24/cs
NON24393	21" x 27", 18 oz fill	12/cs
NON2439322	21" x 27", 22 oz fill	12/cs
NON24397	19" x 26", 15 oz fill	12/cs
PM1622-10	16" x 22", 10 oz fill	12/cs
PM1824-15	18" x 24", 15 oz fill	12/cs
PM2127-18	21" x 27", 18 oz fill	12/cs
PM2127-22	21" x 27", 22 oz fill	12/cs



### Terrycloth Double Tread Slippers

These slippers have skid-resistant treading on the top and bottom of the slipper for more coverage. Color-coded for easy size identification.

ITEM NUMBER	DESCRIPTION	PACKAGING
MDTDBLTREADM	Medium, green	48 pr/cs
MDTDBLTREADL	Large, blue	48 pr/cs
MDTDBLTREADXL	X-large, beige	48 pr/cs
MDTDBLTREADXXL	XX-large, gray	48 pr/cs

Our new red double-tread skid-resistant slipper discreetly identifies patients with a high risk of falling. Comes with tread on the top and bottom of the slipper.

ITEM NUMBER	DESCRIPTION	PACKAGING
MDT211218R	One size fits most, red	48 pr/cs
MDT211218RXL	X-Large, red	48 pr/cs

### Terrycloth Single-Tread Slippers

Nothing is cozier than soft, warm, terrycloth single tread slippers. Their skid-resistant treading means they're safe, too! Constructed with terrycloth on the inside to absorb perspiration and provide added patient comfort. Color-coded for easy size identification.

ITEM NUMBER	DESCRIPTION	PACKAGING
MDT211218I	Infant, yellow	48 pr/cs
MDT211218T	Toddler, teal	48 pr/cs
MDT211218SI	Small, red	48 pr/cs
MDT211218MI	Medium, green	48 pr/cs
MDT211218LI	Large, blue	48 pr/cs
MDT211218XLI	X-large, beige	48 pr/cs
MDT211218XXLI	XX-large, gray	48 pr/cs
MDT211216BI	One size fits most, blue	48 pr/cs
MDT211216I	One size fits most, white	48 pr/cs





### The Industry's Sturdiest Shelving Unit!

Our economical, sturdy chrome shelving units consist of four posts, four shelves, four post levelers and plastic shelf clips. They can be used as standalone units or part of a full storage solution. The shelving units can easily be made mobile by adding casters.

ITEM NUMBER	DESCRIPTION	PACKAGING
MDRM18366C	18" x 36" x 64"	ea
MDRM18486C	18" x 48" x 64"	ea
MDRM18606C	18" x 60" x 64"	ea
MDRM24366C	24" x 36" x 64"	ea
MDRM24486C	24" x 48" x 64"	ea
MDRM24606C	24" x 60" x 64"	ea

### Make it Mobile with TownLine Casters

Make any of our stationary units mobile by adding casters. These feature 5" swivel, non-marking polyurethane wheels that are threaded to fit easily into the bottom of the posts. Donut bumpers are included to help protect walls.

ITEM NUMBER	DESCRIPTION	PACKAGING
MDRMSSC	Caster	2/pk
MDRMSSCB	Brake caster	2/pk



### Snap-On Shelf Covers Attach Easily and Help Create a Healthier Environment

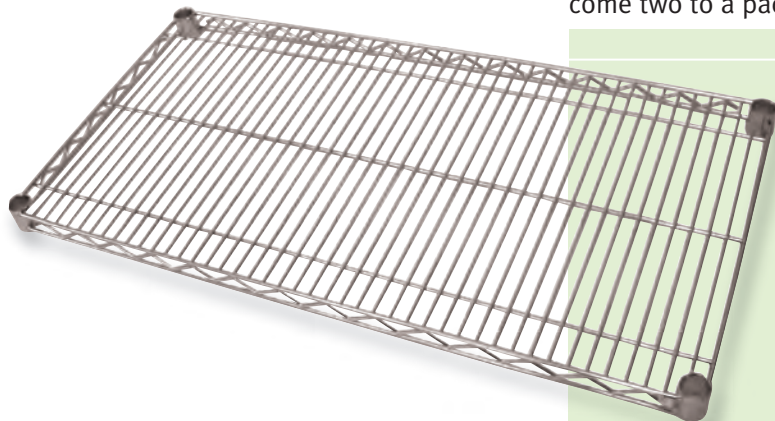
When attached to a shelf, these covers create a solid, clean surface. Constructed of rugged polyethylene for added strength and durability. Raised, embossed design promotes air circulation.

ITEM NUMBER	DESCRIPTION	PACKAGING
MDR1824SC	18" x 24"	ea
MDR1830SC	18" x 30"	ea
MDR1836SC	18" x 36"	ea
MDR1842SC	18" x 42"	ea
MDR1848SC	18" x 48"	ea
MDR1860SC	18" x 60"	ea
MDR2424SC	24" x 24"	ea
MDR2436SC	24" x 36"	ea
MDR2442SC	24" x 42"	ea
MDR2448SC	24" x 48"	ea
MDR2460SC	24" x 60"	ea
MDR2472SC	24" x 72"	ea



### TownLine Wire Shelves Allow You to Customize Your Units!

Save on our most popular sizes of shelves. Create your own custom shelving unit by ordering shelves, posts and casters if needed. Our chrome shelves come two to a pack and include shelf clips.



ITEM NUMBER	DESCRIPTION	PACKAGING
MDRM1830S	18" x 30"	2/pk
MDRM1836S	18" x 36"	2/pk
MDRM1842S	18" x 42"	2/pk
MDRM1848S	18" X 48"	2/pk
MDRM1860S	18" x 60"	2/pk
MDRM1872S	18" x 72"	2/pk
MDRM2436S	24" x 36"	2/pk
MDRM2448S	24" x 48"	2/pk
MDRM2454S	24" x 54"	2/pk
MDRM2460S	24" x 60"	2/pk
MDRM2472S	24" x 72"	2/pk

### Townline Shelf Clips Securely Attach Shelves to Posts

Interlocking plastic shelf clips are used to attach shelves to post. They snap together for easy installation.



ITEM NUMBER	DESCRIPTION	PACKAGING
MDRMBPSC	Shelf clips	4/pk

### Make Your Shelving Units Any Height with TownLine Wire Posts

Our chrome posts are clearly marked for easy installation. The easy-to-adjust leveling bolts will help to compensate for uneven floors. Constructed with 1" round steel tubing for optimal strength and durability. Posts come four to a pack.



ITEM NUMBER	DESCRIPTION	PACKAGING
MDRM34P	34"	4/pk
MDRM54P	54"	4/pk
MDRM64P	64"	4/pk
MDRM72P	72"	4/pk
MDRM84P	84"	4/pk

### TownLine Shelf Ledges

Use these shelf ledges to keep your valuable inventory from tumbling to the floor.

ITEM NUMBER	DESCRIPTION	PACKAGING
MDRM418L	18" x 4" side ledge	ea
MDRM424L	24" x 4" side ledge	ea
MDRM436L	36" x 4" back ledge	ea
MDRM448L	48" x 4" back ledge	ea
MDRM460L	60" x 4" back ledge	ea



### Clear Shelf Liner

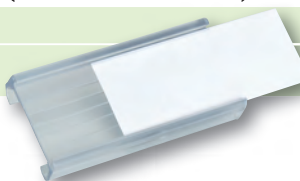
This 1/16" thick, clear mylar-plastic shelf inlay can be placed on top shelves to help prevent cross contamination. If the exact size you need is not available, choose the next-larger size and cut it to fit.

ITEM NUMBER	DESCRIPTION	PACKAGING
MDRT1836L	18" W x 36" L	4/pk
MDRT1848L	18" W x 48" L	4/pk
MDRT1872L	18" W x 72" L	4/pk
MDRT2136L	21" W x 36" L	4/pk
MDRT2436L	24" W x 36" L	4/pk
MDRT2448L	24" W x 48" L	4/pk
MDRT2460L	24" W x 60" L	4/pk

### Label Holders

Clear plastic label holders snap easily onto a shelf edge to let you quickly identify items. Holders can be cut if other sizes are required. (Labels not included.)

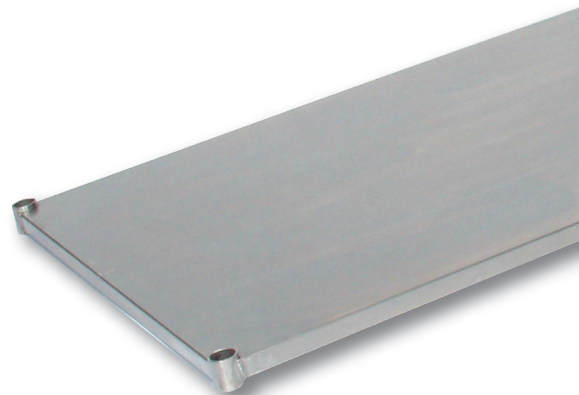
ITEM NUMBER	DESCRIPTION	PACKAGING
MDRTCLH	33" W	ea



### Solid Galvanized Steel Shelf

Our 18-gauge solid galvanized steel shelves are a cost-effective alternative to stainless steel. Use one or more on a shelving unit. Plastic shelf clips are included.

ITEM NUMBER	DESCRIPTION	PACKAGING
MDREG1836G	18" x 36"	ea
MDREG1848G	18" x 48"	ea
MDREG1860G	18" x 60"	ea
MDREG2436G	24" x 36"	ea
MDREG2448G	24" x 48"	ea
MDREG2460G	24" x 60"	ea





## WIRE SHELVING

### Hold Your Units Together with These S-Hooks

Add-on units are made easy with our S-hooks. Use two for each add-on wire shelf and three for widespan shelves over 36". When connecting an add-on unit, the S-hooks are used in the corners for L-shaped units, on the side for back to back units or on the ends for continuous runs of shelving.



ITEM NUMBER	DESCRIPTION	PACKAGING
MDRMSH	S-hooks, chrome	4/pk

### Strong, Mobile Wire Utility Carts

Our popular utility carts consist of two U-shaped handles, two or three shelves, plastic shelf clips, two 5" swivel casters and two 5" swivel break casters with donut bumpers. The overall height is 39 1/2". Chrome finish.

ITEM NUMBER	DESCRIPTION	PACKAGING
MDRM18302UC	2 shelves, 18" W x 30" L	ea
MDRM18362UC	2 shelves, 18" W x 36" L	ea
MDRM21362UC	2 shelves, 21" W x 36" L	ea
MDRM18303UC	3 shelves, 18" W x 30" L	ea
MDRM18363UC	3 shelves, 18" W x 36" L	ea
MDRM21363UC	3 shelves, 21" W x 36" L	ea



## Window Treatments - Cornices

A cornice is a shallow, box-like structure covered in fabric and mounted above a window for decoration.

These beautiful, fabric-covered cornices are a perfect way to dress up any window.

- Extruded polymer frame is strong yet light-weight for easy installation
- Completely flame-retardant (unlike standard wood cornices)
- Four classic styles available below (additional fabrics available upon request)
- Perfect for mounting outside the window frame (project 3<sup>1</sup>/<sub>2</sub>" from wall)
- Custom-made to fit, fully assembled and ready to hang
- Ship in 3-4 working days
- Two fabrics per cornice for designer appeal



### HILLSIDE RETREAT



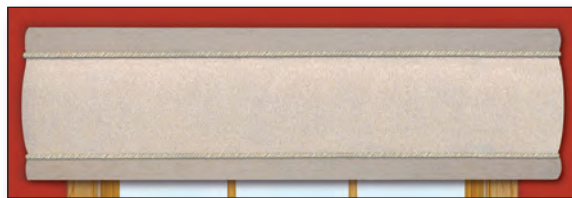
ITEM NUMBER	DESCRIPTION (CORNICER INSIDE WIDTH)	PACKAGING
HR38T48	38" - 48" W	ea
HR49T60	49" - 60" W	ea
HR61T72	61" - 72" W	ea
HR73T84	73" - 84" W	ea
HR85T96	85" - 96" W	ea

### SUMMER RAIN



SR38T48	38" - 48" W	ea
SR49T60	49" - 60" W	ea
SR61T72	61" - 72" W	ea
SR73T84	73" - 84" W	ea
SR85T96	85" - 96" W	ea

### CLEAR SKIES



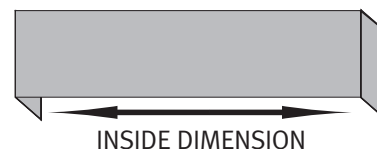
SK38T48	38" - 48" W	ea
SK49T60	49" - 60" W	ea
SK61T72	61" - 72" W	ea
SK73T84	73" - 84" W	ea
SK85T96	85" - 96" W	ea

### MOSSY DREAMS



MD38T48	38" - 48" W	ea
MD49T60	49" - 60" W	ea
MD61T72	61" - 72" W	ea
MD73T84	73" - 84" W	ea
MD85T96	85" - 96" W	ea

**To order:** Locate size in description and corresponding item number for the cornice of your choice. When placing order, specify exact inside dimension (in inches) cornice should be. All cornices are 12" in height.



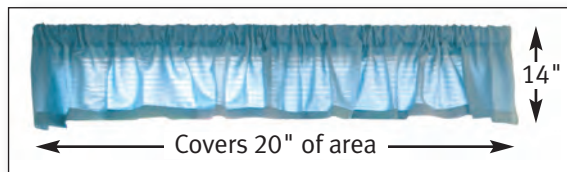
## CUBICLE CURTAINS

### Gathered Valances

Our Shirred, gathered valances have a hollow sleeve at the top through which a rod is inserted. The valance is mounted at the top of a window for decoration.

**Use coordinated valances made from the same fabric as your cubicles!**

- Each valance covers 20" of area once installed. Use multiple valances on each rod as needed for ample coverage
- Pocket size of 3 1/2" fits most existing hardware
- Simple to install — just slide rod into the pocket and hang
- Standard sizes for easy maintenance, ordering and re-install after laundering
- Completely flame-retardant
- Ship in seven working days
- Choose from all 17 colors in the Spring Frost™ collection (below)



**7-Day  
Quick Ship**

ITEM NUMBER	DESCRIPTION	PACKAGING
VAL27X14SF***	Spring Frost	ea

\*\*\*Add three-letter color code to complete item number.

**To order:** Follow the chart below to locate the number of valance panels to use for your window. Each panel is made to cover 20" of area, so use the recommended number below for adequate fullness. These top-pocket valances are made to fit a 2-1/2"-wide pocket rod (listed below also).

WINDOW WIDTH	# OF VALANCE PANELS	ROD TO ORDER
28" - 40"	2	RODR723WDSBP (adjusts 28" - 48")
41" - 60"	3	RODR723WDSBP (adjusts 28" - 48") or RODR725WDSBP (adjusts 48" - 86")
61" - 80"	4	RODR725WDSBP (adjusts 48" - 86")
81" - 100"	5	RODR726WDSBP (adjusts 66" - 120")
101" - 120"	6	RODR726WDSBP (adjusts 66" - 120")

### Cubicle Curtains to Match!

#### SPRING FROST™

**Our most popular cubicle curtain.**

Spring Frost has a great eye-catching basket-weave pattern with warm colors and a unique tone-on-tone design. Washable up to 160°. Complies with NFPA-701 small- and large-scale codes.

ITEM NUMBER	DESCRIPTION	PACKAGING
SFQ102X84M***	102" W x 84" H	ea
SFQ136X84M***	136" W x 84" H	ea
SFQ170X84M***	170" W x 84" H	ea
SFQ204X84M***	204" W x 84" H	ea
SFQ238X84M***	238" W x 84" H	ea
SFQ102X94M***	102" W x 94" H	ea
SFQ136X94M***	136" W x 94" H	ea
SFQ170X94M***	170" W x 94" H	ea
SFQ204X94M***	204" W x 94" H	ea
SFQ238X94M***	238" W x 94" H	ea

\*\*\*Add three-letter color code to complete item number.



Color "Copen" (COP) shown above



Colors and codes are in order left to right as pictured: Plum (PLU), Chantilly (CHA), Rose Beige (RSB), Eggshell (EGG), Beige (BGE), Pearl (PRL), Oatmeal (OAT), Suede (SUE), Taupe (TPE), Teal (TAL), Green Mist (GRM), Willow (WIL), Forest (FOR), Delft (DFT), Steel (STL) and Midnight (MID).



## More Cubicle Curtains

All cubicle fabrics can also be used for custom drapery and valances. Lead times vary. Please contact your Medline representative for more details.

### EMBASSY

This classic floral-patterned cubicle curtain provides your rooms with an intricate, timeless design in a series of soothing colors. Washable up to 160°F. Complies with NFPA-701 small- and large-scale codes.



Colors and codes are in order left to right as pictured: Parchment (PAR), Natural (NAT), Oatmeal (OAT), Melrose (MEL), Flintstone (FLT), Green Tea (GRT), Mint (MNT), Willow (WIL), Sea Glass (SGL), Blue (BLU) and Steel (STL).

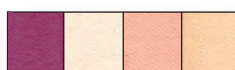
ITEM NUMBER	DESCRIPTION	PACKAGING
EMQ102X84M***	102" W x 84" H	ea
EMQ136X84M***	136" W x 84" H	ea
EMQ170X84M***	170" W x 84" H	ea
EMQ204X84M***	204" W x 84" H	ea
EMQ238X84M***	238" W x 84" H	ea
EMQ102X94M***	102" W x 94" H	ea
EMQ136X94M***	136" W x 94" H	ea
EMQ170X94M***	170" W x 94" H	ea
EMQ204X94M***	204" W x 94" H	ea
EMQ238X94M***	238" W x 94" H	ea

\*\*\* Add three-letter color code to complete item number.

All cubicles are made with standard 20" of white mesh included in actual height measurements. To ensure your satisfaction, on orders of 10 or more curtains, a sample will ship within seven working days for approval prior to producing the entire order. All items are custom-made and non-returnable.

### NORTHWOODS

This attractive pattern will cheer up any area with stylish swirls, suns, leaves and other shapes. Be sure to order a large swatch of fabric to see for yourself. Complies with NFPA-701 and washable to 160°F.

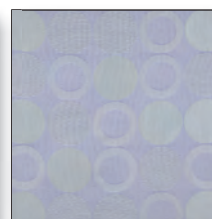


Colors and codes are in order from left to right as pictured: Juneberry (JUN), Dune (DUN), Nectar (NEC) and Sunshine (SUN).

ITEM NUMBER	DESCRIPTION	PACKAGING
NWQ102X84M***	102" W x 84" H	ea
NWQ136X84M***	136" W x 84" H	ea
NWQ170X84M***	170" W x 84" H	ea
NWQ204X84M***	204" W x 84" H	ea
NWQ238X84M***	238" W x 84" H	ea
NWQ102X94M***	102" W x 94" H	ea
NWQ136X94M***	136" W x 94" H	ea
NWQ170X94M***	170" W x 94" H	ea
NWQ204X94M***	204" W x 94" H	ea
NWQ238X94M***	238" W x 94" H	ea

\*\*\* Add three-letter color code to complete item number.

**Woven fabrics** are made with multiple colored yarns to create beautiful patterns that give any décor a high-end appeal. Here are some of our favorites. Use these cubicles for drapery, valances or quilted bedspreads for easy coordination. Many more patterns are available upon request.



New leaf/Purple sage

Leaf block/Marsh

Geo leaf/Hybrid

Square dot/Primary

Palm beach/Grain

Yo-Yo/Seamist



Protection Plus is a registered trademark of Medline Industries, Inc.  
Ozium is a registered trademark of Waterbury Co.  
Green Tree is a trademark of Medline Industries, Inc.  
Duraview and Clean Shape are registered trademarks of Aluta, Inc.  
Epi-Clenz is a registered trademark of Medline Industries, Inc.  
Dispatch, Citrex, Precise and Citrace are registered trademarks of Caltech Industries.  
Maxima, Bowlette, Terra Green and Shattered 99 are registered trademarks of,  
Bru-Clean and BacZap are trademarks of Brulin and Company.  
EZ Foam is a trademark of Kutol.  
AKRO is a registered trademark of Myers Industries.  
WaveBrake is a registered trademark of Rubbermaid Commercial Products.  
Sani-Cloth is a registered trademark of, and Sani-Dex ALC is a trademark of Nice-Pak Products.  
Snuggle is a registered trademark of Conopco, Inc.  
Citrus II is a registered trademark of Beaumont Products.



One Medline Place  
Mundelein, IL 60060

[www.medline.com](http://www.medline.com)

1-800-MEDLINE