



WE'VE GOT  
**NEXT**

PRODUCT CATALOG | 2007-08

 **Mueller**®



## THE SPORTS MEDICINE FAMILY



**OUR MISSION** is to ensure that quality sports medicine products are available to consumers throughout the world.

**INTEGRITY   PRIDE   EXCELLENCE**

*Curt Mueller*

**Curt Mueller, R.Ph.**  
CEO, Registered Pharmacist

*Brett Mueller*

**Brett Mueller**  
President

*Ginger Mueller-Mann*

**Ginger Mueller-Mann**  
Vice President, Western Region

*Jeff A. Mueller*

**Jeff Mueller**  
Vice President, Team Brand Promotions

*In memory of O.P. Mueller, R.Ph., 1903–1995*





# Feed your wild side.

Putting on your game face has never had more options. Function & fashion unite.



*Randy Moss* 18 RANDY MOSS

**None of it matters**  
if you lose it in the lights.

MUELLER NO GLARE™ GLARE-REDUCING STRIPS  
**NEW! ASSORTED SHAPES**

**SEE PAGES 15-17** for patented NO GLARE™ Glare-Reducing Eye Protection products



## • TABLE OF CONTENTS •

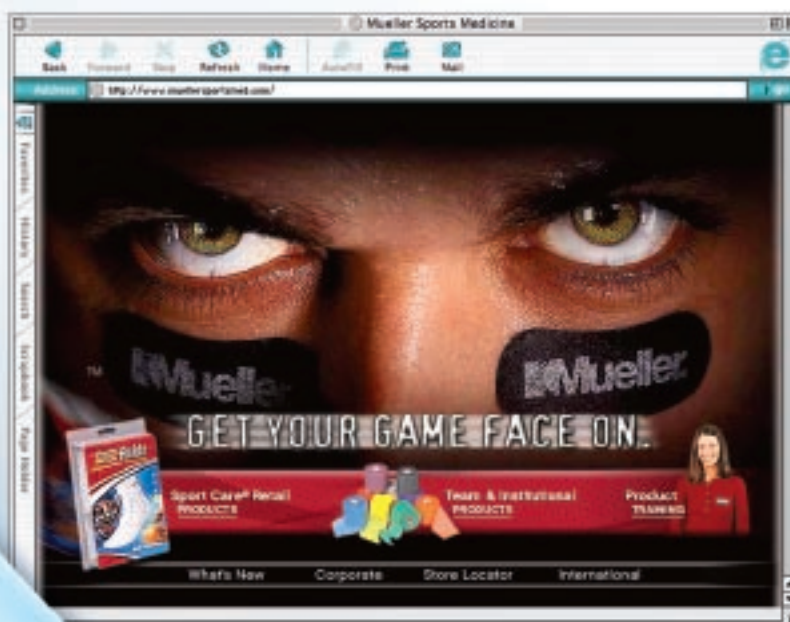
<b>2</b> New & Featured Products	<b>41</b> Specialty Braces & Supports
<b>4</b> Tape & Taping Supplies	<b>42</b> Mouthguards
<b>6</b> Underwrap	<b>42</b> Athletic Supporters & Briefs
<b>9</b> Trainers Kits	<b>43</b> Mueller Collar
<b>12</b> Cold/Hot Therapy	<b>44</b> Padding & Abrasion Control
<b>14</b> Analgesics & Elastic Wraps	<b>46</b> Sports Accessories
<b>15</b> No Glare® Eye Protection	<b>47</b> Foot Care
<b>18</b> Hg80® Mueller Mercury®	<b>48</b> Grip Enhancers
<b>24</b> Ankle Braces & Supports	<b>49</b> Bottles & Carriers
<b>30</b> Knee Braces & Supports	<b>51</b> Quench® Sports Gum
<b>36</b> Elbow Braces & Supports	<b>54</b> Rehab & Fitness
<b>38</b> Wrist Braces & Supports	<b>55</b> International Distribution
<b>40</b> Back Braces & Supports	<b>55</b> <b>INDEX</b>



### AWARD-WINNING DVD

Check out our instructional DVD on taping & bracing techniques, winner of the 2006 NATA Educational Multimedia Contest. Visit a web version online at:

**[www.muellersportsmed.com/taping/taping.html](http://www.muellersportsmed.com/taping/taping.html)**



### MAKE THE RIGHT SELECTION

Visit us on the web and select "Product Training" for detailed product information.

**[www.muellersportsmed.com](http://www.muellersportsmed.com)**



# NEW! & Featured Products



4

TAPE WRAP®



16

NO GLARE® FLIP-UP SUNGLASSES



6

STRETCH M-TAPE® PREMIUM



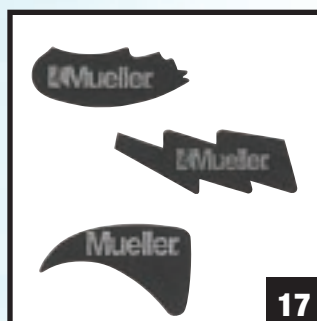
50

STAPHASEPTIC®



44

BLISTER KIT



17

NO GLARE® GLARE  
REDUCING STRIPS  
ASSORTED SHAPES



51

QUENCH® WATER BOTTLE  
DISPLAY, NEW FLAVORS





9

MEDI KIT™ TREKKER



11

TRAINER'S KITS WITH  
IMPROVED CONTENTS



13

SINGLE USE ICE BAG



42

PINK MOUTHGUARDS



21

Hg80® ANKLE BRACE  
w/STRAPS



27

ANKLE SUPPORT  
w/STRAPS



37

GOLFER'S ELBOW  
SUPPORT



43

MUELLER COLLAR COVERS



33

SELF-ADJUSTING KNEE  
STABILIZER



35

SHOKK™ KNEE PADS



36

SHOKK™ ELBOW PADS

## • D I S C O N T I N U E D •

Products listed below will be discontinued, but remain available while supplies last.

**200709** Medi-Kit 300 COMPLETE\*

\*200721 Medi-Kit 300 EMPTY  
remains available

**030501** Cup Carrier

**020526** 5 Gallon Cooler

**020525** 10 Gallon Cooler\*

\*Coolers for Water Boys  
will still be available

**010301** Alcohol Rub, pint

**060801** First Aid Bandage

**200602** Tongue Depressors,  
500 count



# Revolutionary



Advanced woven fabric, **softer feel.**



## Introducing Mueller TapeWrap®

THE ALTERNATIVE TO PREWRAP, COMPRESSION WRAPS, WOUND CARE AND FIXATION BANDAGES.

It's the **cohesive**, breathable, sweat-resistant, high tensile, lightweight, easy-tearing **alternative**.  
It doesn't trap moisture so it **won't slip**. Your tape job stays tight and that means **more support**.



### TAPEWRAP® Premium

<b>22057</b>	White	1" x 6 yds	(48 rolls/cs)
<b>24058</b>	White	2" x 6 yds	(24 rolls/cs)
<b>26059</b>	White	3" x 6 yds	(16 rolls/cs)
<b>24258</b>	Black	2" x 6 yds	(24 rolls/cs)
<b>26259</b>	Black	3" x 6 yds	(16 rolls/cs)





### ZINC OXIDE TRAINERS TAPE

100% cotton backcloth, zinc oxide trainers tape. White, bleached M-Tape® features high tensile strength with excellent tackiness and conformability. Easy handling, easy unwind to the core. Competitively priced.

<b>130104</b>	1" x 10 yds	(48 rolls/cs)
<b>130105</b>	1½" x 15 yds	(32 rolls/cs)
<b>130106</b>	2" x 15 yds	(24 rolls/cs)



### HIGH PERFORMANCE POROUS ATHLETIC TRAINERS TAPE

100% cotton backcloth, zinc oxide trainers tape. Porous feature reduces irritation and helps skin breathe. High tensile strength with superior adhesion and conformability. Delivers consistent unwind to the core. Competitively priced.

<b>130162</b>	1½" x 15 yds	(32 rolls/cs)
<b>130163</b>	2" x 15 yds	(24 rolls/cs)



### *Tear-light*Tape™

#### LIGHTWEIGHT ELASTIC ADHESIVE TAPE

Superior adhesive with excellent conformability. Easy to tear. Easy unwind. Ideal for securing lateral knee braces, as a compression wrap or fixation bandage for padding and cold packs.

<b>130622</b>	2" x 5 yds stretched	(24 rolls/cs)	<b>130632</b>	2" x 7½ yds stretched	(24 rolls/cs)
<b>130623</b>	3" x 5 yds stretched	(16 rolls/cs)	<b>130633</b>	3" x 7½ yds stretched	(16 rolls/cs)
<b>130626</b>	1½" x 7½ yds stretched	(32 rolls/cs)			

### **BLACK** *Tear-light*Tape™

#### LIGHTWEIGHT ELASTIC ADHESIVE TAPE

<b>130642</b>	2" x 7½ yds stretched	(24 rolls/cs)
<b>130643</b>	3" x 7½ yds stretched	(16 rolls/cs)




**Mtape®**
**TEAM COLORS**

M-Tape® in team colors have bleached 100% cotton backcloth. Colorfast dyes will not bleed. Gray M-Tape® is NCAA approved for football gloves. 1½" x 12½ yds. 32 rolls/case.

<b>130121</b> Blue	<b>130125</b> Black	<b>130130</b> Maroon
<b>130122</b> Green	<b>130126</b> Orange	<b>130131</b> Gray
<b>130123</b> Scarlet	<b>130128</b> Purple	<b>130132</b> Pink
<b>130124</b> Gold	<b>130129</b> Beige	


**Stretch Mtape® PREMIUM**
**MAXIMUM STRENGTH ELASTIC ADHESIVE TAPE**

Our strongest stretch tape. For areas and techniques normally difficult to tape. Superior adhesive and tensile strength. Red center guideline helps for consistent taping. Soft featured edges won't roll up when putting on athletic pants or shorts.

<b>130602P</b> 2" x 5 yds stretched	(24 rolls/cs)
<b>130603P</b> 3" x 5 yds stretched	(16 rolls/cs)


**M Wrap®**
**COLORED**

Pre-taping foam underwrap helps protect skin from tape chafing. Can be used to hold pads and socks in place and as a protective wrap inside hiking boots, ski boots, and other athletic footwear. 2¾" x 30 yds. **Sold only 48 rolls/case.**

<b>130704</b> Big Red	<b>130707</b> Big Black	<b>130712</b> Big Purple
<b>130705</b> Big Green	<b>130708</b> Big Blue	<b>130713</b> Big Maroon
<b>130706</b> Big Gold	<b>130709</b> Big Orange	<b>130714</b> Big Pink


**M Wrap®**
**Natural** 2¾" x 30 yds

<b>130701</b> (12 rolls/cs)	<b>130702</b> (48 rolls/cs)
-----------------------------	-----------------------------


**Mlastic® Tape**
**COHESIVE STRETCH TAPE**

Lightweight, cohesive stretch tape adheres only to itself. Will not stick to skin or hair. Also used as Blood Spill Tape™ for compression on wounds to help stop bleeding.

<b>130612</b> 2" x 5 yds stretched	(24 rolls/cs)
<b>130613</b> 3" x 5 yds stretched	(16 rolls/cs)


**Spatting Tape™**
**LIGHTWEIGHT ELASTIC ADHESIVE TAPE**

Ideal for spatting shoes to help secure cleats or cover logos. Can also be used to secure braces and padding. Easy to tear.

<b>26427</b> 2" x 7½ yds stretched	(24 rolls/cs)
<b>26437</b> 3" x 7½ yds stretched	(16 rolls/cs)





It's totally pink, and

tougher than you think.



**WRAP IT. HOLD IT. WHAT'S YOUR SPORT?**

It's pink, and it's still the real M-Wrap®. Only more fashionable.

It's just as versatile and tough. Hold a pack or a pad.

Keep hair back. Wrap a knee or an ankle.

Hold sleeves up. Fast. Easy.



**PINK M-Wrap®**

(see M-Wrap® on opposite page)







### QUICK DRYING ADHERENT SPRAY

Colorless tape adherent. Apply to skin before taping.

- 170201** 4 oz aerosol spray (12/cs)  
**170202** 10 oz aerosol spray (12/cs)



Helps tape and pre-wrap stick better to skin. Sprayer pumps a fine mist, creating an even tack. Convenient non-aerosol formula is stainless and fast-drying.

- 131301N** 8 oz pump spray (12/cs)  
**131302N** gallon liquid (1 ea)



### TUFFNER™ PRE-TAPE SPRAY

Spray adherent helps secure tapes and wraps.

- 200901N** 4 oz aerosol spray (12/cs)  
**200902N** 10 oz aerosol spray (12/cs)



### TAPE & TUFFNER™ REMOVER

Spray or brush over tape to loosen. Removes Tuffner™ Pre-Tape Spray.

- 200101** 4 oz aerosol spray (12/cs)  
**200102** 10 oz aerosol spray (12/cs)  
**200103** quart liquid (12/cs)  
**200104** gallon liquid (1 ea)



### LUBRICATING OINTMENT

Non-friction ointment for athletes. Apply to skin to reduce friction from athletic equipment, pads, shoes, etc. Contains soothing lanolin.

- 120201N** 3 oz tube (12/cs)  
**120202N** 1 lb jar (12/cs)  
**120203N** 5 lb jar (6/cs)  
**120204N** 25 lb drum (1 ea)



### TAPE TOTE™

Double-cylinder Styrofoam case designed to carry and protect tape rolls from damage or extreme heat and cold. Sold empty.

- 200351** Tape Tote™ (1 ea)



### ANKLE WRAP

2" cotton wrap makes a quick, economical strapping for ankles. Can be cut to desired length and anchored with M-Tape®.

- 010602** 2" x 72 yd roll (12/cs)



### Taping & Bracing Techniques INSTRUCTIONAL DVD

Awarded 1st place in the 2006 NATA Educational Multimedia Contest.

- 200831** approx. 1 hour DVD

### Basic Principles of Athletic Taping BOOKLET

Step-by-step booklet provides a basic understanding of taping techniques.

- 200803** 36-page booklet



### BANDAGE SCISSORS

7 1/4" scissors with blunt lower blade to safely remove tape and bandages.

- 020301** Each



### BANDAGE SHEARS

Heavy-duty, stainless steel paramedic shears cut through straps, padding and clothing.

- 020302** Each



### EMERGENCY SHEARS

Extra sharp pointed high carbon steel blades and soft molded non-slip grips. Sharp enough to cut through face masks.

- 020351** Each



Athletic tape cutter cuts fast, safely. Features snap-in stainless steel blade cartridge. Replacement blades available.

- 100201** M Cutter™ (12/cs)  
**100202** M Cutter™ blades (10 blades/pack) (10 pks/cs)

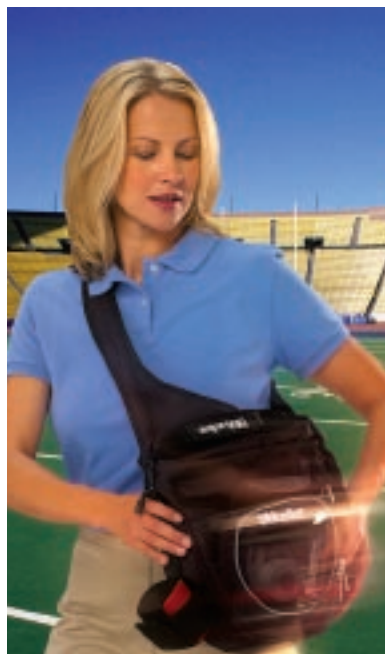


### TAPE CUTTER ECONOMY

Cuts through tape quickly and effortlessly. Unbreakable nylon with stainless steel blade.

- 200201** Tape Cutter (24/cs)  
**200301** Replacement blades (10 blades/pack) (12 pks/cs)





Sling one, carry-on the other, trek the third...



### SLING BAG

Keep important items close at hand with this convenient shoulder sling bag that can be easily moved from back to front. Padded adjustable strap. Hook and loop closures on pockets keep items from falling out. Exterior pockets allow easy access to key items: specifically made to fit rolls of tape, cell phone/pager, and emergency shears/M-Cutter™. Partitioned interior pockets and mesh pouches allow easy organization. Measures 12"L x 4"W x 14"H, central compartment capacity 396 cu. in., outer pocket capacity 42 cu. in.

**16017** Black Empty  
(Contents shown for concept only)



### MEDI KIT™ CARRY-ON

Extremely functional trainers kit constructed of tough, water-resistant material. Runner on bottom helps protect and keep kit off ground. Front and side pockets with clear pocket zipper liners and removable clear lid zipper liner allow easy access and storage. Elastic loop holders and removable dividers for main compartment maximize organization. Padded shoulder strap can be removed or adjusted for comfort. Measures 18"L x 9.5"W x 10.5"H, central compartment capacity 795 cu. in., outer pocket capacity 422 cu. in.

**16007** Black Empty  
**16027** Red Empty  
(Contents shown for concept only)



### MEDI KIT™ TREKKER

Scaled down version of the popular Medi Kit™ 1000 with rugged wheels to accommodate any terrain, retractable handle, spacious interior compartments and padded shoulder strap. Incorporates features from the popular Medi Kit™ Carry-On for maximum organization and convenience. Measures 17"L x 18"W x 14"H, central compartment capacity 795 cu. in., outer pocket capacity 422 cu. in.

**14007** Black Empty  
(Contents shown for concept only)







### MEDI KIT™ 100

Heavy-duty metal kit. Special metal divider in base keeps 4 oz. aerosols upright. Empty weight 7 lbs., measures 16"L x 7.25"W x 7.5"H, capacity 870 cu. in.

#### Black

- 200718** Complete (Contents shown for concept only)  
**200719** Empty



### MEDI KIT™ 200

Heavy-duty metal kit. Special hip-roof design allows storage of large 10 oz. aerosol cans. Metal divider in base of kit prevents cans from tipping over. Empty weight 8.5 lbs., measures 15"L x 9.75"W x 10.25"H, capacity 1,499 cu. in.

#### Black

- 200707** Complete (Contents shown for concept only)  
**200708** Empty



### MEDI KIT™ 300

Features a hardwood frame covered with durable vinyl and convenient fold-out design with a unique tape tray to protect tape. Empty weight 15 lbs., measures 17.5"L x 7.5"W x 15.5"H, capacity 2,034 cu. in.

#### Black

- 200721** Empty (Contents shown for concept only)



### MEDI KIT™ 500

Medi Kit™ 500 serves as a portable training room. This roomy kit has a vinyl covered hardwood frame with reinforced corners. Empty weight 20 lbs., measures 18.7"L x 9"W x 16.5"H, capacity 2,777 cu. in.

#### Black

- 200717** Empty



### MEDI KIT™ 1000 ON WHEELS

Ideal traveling training room with self-storing retractable handle and padded shoulder strap. Features multiple interior compartments, adjustable dividers, interior and exterior zippered pockets, openings to accommodate crutches, and rugged wheels to accommodate any terrain. Empty weight 12.75 lbs., measures 30.5"L x 14.5"W x 13"H, central compartment capacity 3,645 cu. in., outer pocket capacity 396 cu. in.

#### Black

- 200739** Empty



### CLEAR ZIPPER BAGS

Handy, versatile storage for special items in easy-to-see clear zippered bag. Fits into trainers kits or sports bags for organized take-alongs.

- 17058** Small bag 5.5" x 7.5" Empty  
**17059** Large bag 11" x 7.5" Empty  
 (Contents shown for concept only)



### REFILL KIT

For refilling Medi Kits™, Carry-On Bags and Mueller Sport Care® Soft Kits.

- 200750** Each (Contents may vary)

#### CONTENTS

- |                         |                               |
|-------------------------|-------------------------------|
| 4 - 4" x 4" Gauze Pads  | 1 - 3 oz Lubricating Ointment |
| 10 - 3" x 3" Gauze Pads | 1 - M Cutter™                 |
| 6 - M Strips® X-Large   | 1 - 2 oz Germa™ Spray         |
| 12 - M Strips® Regular  | 1 - 3 oz Medi Stat™ Spray     |
| 10 - Nasal Plugs        |                               |





### MUELLER SPORT CARE® SOFT KIT

Trainers soft kit constructed of tough, water-resistant poly fabric. Zippered outside pockets, mesh enclosure and adjustable inner compartments hold gear securely in place. Shoulder strap and hand grips for carrying convenience. Measures 21"L x 10"W x 12"H, central compartment capacity 1,275 cu. in., outer pocket capacity 1,193 cu. in.

#### Black

**200730** Complete (Contents shown for concept only)

**200731** Empty



### MUELLER SPORT CARE® JR. SOFT KIT

Durable construction and handy compartments for easy access. Same components as the larger Sport Care® Soft Kit. Measures 16"L x 10"W x 9"H, central compartment capacity 654 cu. in., outer pocket capacity 234 cu. in.

#### Black

**200735** Complete (Contents shown for concept only)

**200734** Empty



- 1 - 4 oz Tuffner™ Pre-Tape Spray
- 1 - roll Elastic Bandage
- 1 - Glove Canister
- 3 - pair Exam Gloves
- 1 - Mueller KOLD® Instant Cold Pack
- 1 - roll M Wrap®
- 1 - 1½" M Tape®
- 1 - Tape Tote™
- 1 - 4 oz Coolant Cold Spray
- 1 - Wonder Wrap™ (3" Elastic Wrap)

- 1 - 4 oz Tape & Tuffner™ Remover Spray
- 1 - 2.75 oz Abrasion Ointment
- 1 - Gauze Roll
- 10 - StaphAseptic® ⅓ oz packets
- 3 - Ice Bags, single use



### TEAM FIRST AID KIT

Contains basic supplies for taping, cold therapy and wound care. An economical, lightweight and sturdy kit. Approximate weight 2 lbs. (filled). Measures 10.75"L x 5"W x 3.5"H, capacity 188 cu. in.

**200705** Orange Complete (Contents may vary)

#### CONTENTS

- 1 - roll M Tape®
- 1 - Mueller KOLD® Instant Cold Pack
- 1 - roll Elastic Bandage
- 10 - 3" x 3" Gauze Pads
- 4 - 4" x 4" Gauze Pads
- 12 - M Strips® Regular
- 6 - M Strips® X-Large
- 1 - roll M Wrap®
- 1 - pair Exam Gloves
- 1 - Wonder Wrap™ (3" Elastic Wrap)
- 1 - 2 oz Germa™ Spray
- 5 - StaphAseptic® ⅓ oz packets



### FIRST AID SOFT KIT

Ideal for athletes and parents. Lightweight, compact kit contains basic supplies for taping, cold therapy and wound care. Sturdy Cordura nylon with 3" belt loop and red color for quick visibility. Measures 7.5"L x 3"W x 5"H, capacity 112 cu. in.

**200738** Red Complete (Contents may vary)

#### CONTENTS

- 1 - Mueller KOLD® Instant Cold Pack
- 12 - M Strips® Regular
- 6 - M Strips® X-Large
- 10 - 3" x 3" Gauze Pads
- 4 - 4" x 4" Gauze Pads
- 1 - Gauze Roll
- 1 - roll Adhesive Tape
- 1 - roll Elastic Bandage
- 1 - pair Exam Gloves
- 1 - 2 oz Germa™ Spray
- 5 - StaphAseptic® ⅓ oz packets

### FANNY PACK

Water-resistant construction features large compartments to keep supplies organized. Main pocket contains 5 accessory loops for small items. Fits comfortably around waist. Measures 12"L x 5"W x 4.5"H, central compartment capacity 121 cu. in., outer pocket capacity 24 cu. in.

**200728** Black Empty

StaphAseptic® is a registered trademark of Tec Labs, Albany, OR





### ICE BAGS & DISPENSER

Economical and disposable plastic bags. (10" x 18") 1500 bags/roll. Heavy-duty steel dispenser is coated to resist scuffing.

- 030801** Ice bags  
**030851** Ice bag dispenser



### EZ-WRAP™

Easy to use, economical 4" x 1000' film holds cold packs and pads securely in place. Always cover or wrap Cold/Hot Pack before applying to skin.

- 050304** EZ-Wrap™ 6 rolls w/handles



### MUELLER KOLD® WRAP

U.S. PATENT 4,377,160

Elastic wrap saturated with a nontoxic gel cools at room temperature. Provides cold and compression to help reduce swelling. Free foam cooler when ordered in case quantities.

- 030106** 2" x 48" roll (12/cs)  
**030107** 3" x 72" roll (12/cs)

### ICE BAG

Use with ice cubes, crushed ice or cold water. Pleated design allows bag fabric to conform closely to body contours. Reusable and economical.

- 030602** 9" bag (12/cs)



### COLD THERAPY GEL-BRACE

Extremely light, adjustable brace recommended for recovery period after severe injury. Easily removed gel pads can be placed in the freezer or on ice for cold therapy treatment. Provides maximum support to injured ankles.

- 4556** White Fits Either Ankle  
**ONE SIZE FITS MOST** Fits USA shoe sizes from Women's 6 to Men's 18

### COLD/HOT WRAP

Adjustable elastic wrap conforms to all body parts. Wrap feature holds Cold/Hot pack in place. Includes one 6" x 9" Reusable Cold/Hot Pack in mesh pouch with secure closure. Easy to use.

- 330112** Cold/Hot Wrap (12/cs)



### COLD/HOT THERAPY WRAP

Ideal for the application of cold or hot therapy to small or large body parts. Adjustable side flaps and a detachable extension strap help secure the therapy wrap in place. Small wrap holds one 4¾" x 6" Reusable Cold/Hot Pack. Large wrap holds one 6" x 9" Reusable Cold/Hot Pack.

- 330121** Small w/two 4¾" x 6" Cold/Hot Packs  
**330122** Large w/one 6" x 9" Cold/Hot Pack







### MUELLER KOLD® INSTANT COLD PACK

Quality cold pack activates instantly when squeezed. Needs no refrigeration. Single use and easily disposable.

**030102** 6" x 9" (16 pks/cs)



### REUSABLE COLD/HOT PACK

Soft gel keeps cold in freezer or refrigerator. Economical and can be used over and over. Microwavable for heat therapy.

**030104** Small 4¾" x 6" (12/cs)

**030105** Regular 6" x 9" (12/cs)



### FLEXIBLE COLD/HOT THERAPY PADS

Lightweight, wafer thin pads expand in water for long-lasting heat or cold therapy. Reusable pads conform to any body part.

**EASY TO USE:** Cut to size (economical 28 foot roll contains 840 cells), soak in water to swell pads, then cool in freezer, cooler, refrigerator or heat in microwave or hot water. To reuse, simply resoak in water if needed and refreeze or reheat. Nontoxic and nonhazardous for environmentally safe, easy disposal.



**030302** Dispenser 16" x 28' roll  
**33022** Box (retail pack) 2 pads 7¾" x 9¾" each  
**33033** Clam (retail pack) 1 pad 7¾" x 9¾" each



### THERAPIST SIZE REUSABLE COLD/HOT PACK

Oversized pack is ideal for treating large area body surfaces such as shoulders, hips, back, thighs, etc.

**030109** 12" x 14" (1 ea)



### SINGLE USE ICE BAG

Soft, flexible and absorbent exterior eliminates the need to wrap ice bag before placing on affected body part.

**33127** Retail 4-pack (6" x 10" bags)

**33107** Team 10-pack (6" x 10" bags)



### COOLANT COLD SPRAY

Non-medicated spray to cool skin fast and help relieve swelling.

**030201** 4 oz aerosol spray (12/cs)

**030202** 9 oz aerosol spray (12/cs)



### MUELLERGESIC®

#### Mild warmth ointment

Our most popular analgesic. Contains menthol and methyl salicylate in long-lasting petroleum base.

<b>131201N</b>	2.75 oz tube	(12/cs)
<b>131202N</b>	1 lb jar	(12/cs)



### SPORTS BALM™

Greaseless analgesic lotion for warming pain relief. Great for warming muscles before play and afterwards to help relieve soreness.

<b>190401N</b>	4 oz bottle	(12/cs)
<b>190402N</b>	16 oz bottle	(12/cs)



### ELASTIC BANDAGES

#### Rubberized

High quality cotton and elastic bandages for compression and to hold cold packs in place. Washable. Reusable.

<b>050101</b>	2" x 5 yd rolls stretched	(10/box)
<b>050102</b>	3" x 5 yd rolls stretched	(10/box)
<b>050103</b>	4" x 5 yd rolls stretched	(10/box)
<b>050104</b>	6" x 5 yd rolls stretched	(10/box)



### HOT STUFF®

#### Hottest ointment

Deep penetrating heat in long-lasting petroleum base. Not recommended for use with additional heat source or on sensitive skin.

<b>080501N</b>	2.75 oz tube	(12/cs)
<b>080502N</b>	1 lb jar	(12/cs)



### WONDER WRAP™

**Extra-strength 3" elastic wrap with nylon fibers provides breathable, controlled compression.**

Ideal for wrists, elbows, thighs, knees and ankles. Long-life fabric remains elastic. Comfortable, reusable and easy on/off.

<b>4590</b>	Beige (retail pack)	(1 ea)
-------------	------------------------	--------





It's just a quick flip  
from sunglasses to none ... and, back again.  
Your hands are always free to do your job,  
and your sunglasses are never in the way.



## NO STRINGS ATTACHED

MUELLER NO GLARE® FLIP-UP SUNGLASSES



**ALWAYS THERE, NEVER IN YOUR WAY.**

SHATTER & SCRATCH RESISTANT, safety glasses features. Designed to fit hats & visors.  
100% UVA/B protection or polarized protection (US Patents 6,275,992 D451532 S).

SEE NEXT PAGE FOR: **BLACK ICE** (440441), **SMOKE POLAR** (440442), and **BROWN POLAR** (440443).



### GENERAL SPORTS / OUTDOOR

#### NO GLARE® GLARE-REDUCING FLIP-UP SUNGLASSES

US PATENTS 6,275,992 D451532 S

Our most popular lens, Black Ice, is great for any outdoor activity. Its subtle smoke-like appearance offers 100% UVA/B protection from the sun without compromising sight during low light conditions. From bicycling to tennis, baseball to volleyball, golf to mountain climbing and everything in between, these lenses are most versatile for everyday outdoor use.

**440441** Black Ice (12/cs)



### POLARIZED

#### NO GLARE® GLARE-REDUCING FLIP-UP SUNGLASSES

US PATENTS 6,275,992 D451532 S

These polarized lenses were created for the person with an appetite for water sports. We offer glasses in brown and smoke colored lenses. When glare from the water is an issue, it is not a problem for these glasses. For hunting, fishing, kayaking, canoeing, boating or just being a spectator on the water.

**440442** Smoke Polar (12/cs)

**440443** Brown Polar (12/cs)





GET YOUR GAME FACE ON.™



### NO GLARE® GLARE-REDUCING STRIPS

U.S. PATENT 4,719,909

Pressure-sensitive, maximum glare-reducing strips. Easy to use and remove. Won't smear or sweat off. Won't stain uniforms and allows towel drying of face. **Almost twice as effective as paste.**

- 140404** Team Pack of 144 strips (1 ea)  
**440404** Retail Pack of 9 sheets (24/cs)  
of 4 strips each (36)



### NO GLARE® PREMIUM GLARE-REDUCING STRIPS

U.S. PATENTS 4,719,909, D441,081

**Almost 8 times more effective than paste** due to extra coverage over nose.

- 140405** 36 strips/clamshell (12/cs)  
**82127** Retail Pack of 12 strips (24/cs)



### NO GLARE® GLARE-REDUCING STICK

Black paste for application to cheekbones just below eyes of athletes to reduce glare on bright days.

- 140403** .70 oz stick (24/cs)  
**140413** .15 oz stick (24/cs)  
**440403** .70 oz stick (12/cs)  
(retail pack)

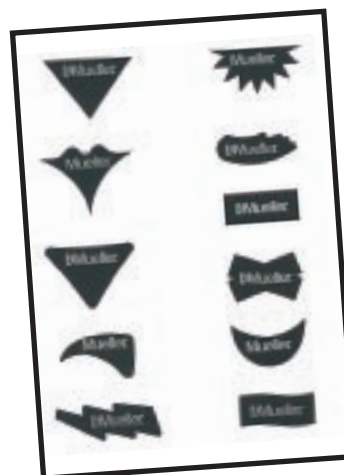


### NO GLARE® GLARE-REDUCING STRIPS ASSORTED SHAPES

U.S. PATENT 4,719,909, D507,054, D507,055, D507,651, D511,573, D513,323, D527,824, D528,658  
OTHER PATENTS PENDING

Same great performance as No Glare® Glare-Reducing Strips in stylish, fun shapes. **Almost twice as effective as paste.**

- 440461** Retail Pack  
54 assorted shaped strips (12/cs)





MUELLER MERCURY®

No sweat. No fungus. No slip. No Neoprene.



No kidding.

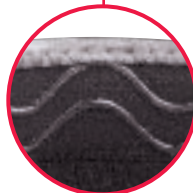
With Hg80® what you **don't** get is as impressive as what you **do** get.

Mueller-exclusive HydraCinn™ fabric is the moisture-wicking catalyst behind the Hg80® heat management system. **NO SWEAT.**

Revolutionary AEGIS® permanently bonded antimicrobial barrier provides protection against odor causing bacteria, fungus and other microorganisms. **NO FUNGUS.** Extremely soft to the touch and lightweight with flatlock seams, these might just be the most comfortable braces you've ever worn. Inner grip strips\* hold braces in place and help prevent brace migration. **NO SLIP.** For pioneering high-performance support, you'll find Hg80® braces and supports to be unlike any you've seen. **NO NEOPRENE.** Over 5 decades of proven performance in America's athletic training rooms has gone into the development of Hg80® — *Mueller Mercury™*

**A new era has converged.** Welcome to the next level.

Mueller-exclusive  
**HydraCinn®** fabric  
is latex-free and  
neoprene-free



Anti-slip **inner grip strips\***  
help prevent brace migration



**HydraCinn®** makes up the  
moisture-wicking inner sleeve  
for the high-performance  
Hg80® braces & supports

Formfitting **hourglass design**  
with superior support for  
each Hg80® Knee Brace



\* Inner grip strips with knee products only

C O N T R O L • A G I L I T Y • F L U I D I T Y





**Upper Strapping System** locks brace in position: outer mesh shell with bidirectional stretch fabric fastens on the sides then comfortably locks across the quadriceps



**Universal Gel Buttress** surrounds and stabilizes the kneecap to help improve patella tracking



**Triaxial Hinge**



**Flexible Steel Springs**

**Tibial Containment System** features a reinforced secondary shell with rear support strap and stabilizing inferior foam buttress

## Hg80® HINGED KNEE BRACE

U.S. PATENTS 4,573,455 4,726,362 4,844,057  
Other Patents Pending

Inner sleeve features a formfitting **hourglass design** and **exclusive moisture-wicking HydraCinn® fabric**. Permanently bonded **antimicrobial barrier** provides protection against odor causing bacteria, fungus, and other microorganisms. Anti-slip **inner grip strips** help prevent brace migration. **Triaxial Hinges** provide maximum support and protection with near-normal knee motion. **Upper strapping system** and **tibial containment system** provide superior support. Extremely soft to the touch and lightweight with flatlock seams for ultimate comfort. Free nylon **mesh laundry bag** shields clothing from hook & loop straps in gym bag or washing machine.

<b>54011</b>	Black	SM	<b>54013</b>	Black	LG
<b>54012</b>	Black	MD	<b>54014</b>	Black	XL

Custom-sized protective nylon **mesh laundry bag** is included with every Hg80® brace

## Hg80® KNEE BRACE

Patents Pending

Inner sleeve features a formfitting **hourglass design** and **exclusive moisture-wicking HydraCinn® fabric**. Permanently bonded **antimicrobial barrier** provides protection against odor causing bacteria, fungus, and other microorganisms. Anti-slip **inner grip strips** help prevent brace migration. Flexible **steel springs** support both sides of knee, yet allow leg flexion and extension. **Upper strapping system** and **tibial containment system** provide superior support. Extremely soft to the touch and lightweight for ultimate comfort. Free nylon **mesh laundry bag** shields clothing from hook & loop straps in gym bag or washing machine.

<b>54111</b>	Black	SM	<b>54113</b>	Black	LG
<b>54112</b>	Black	MD	<b>54114</b>	Black	XL

## Hg80® KNEE STABILIZER

Formfitting **hourglass design** and **exclusive moisture-wicking HydraCinn® fabric**. Permanently bonded **antimicrobial barrier** provides protection against odor causing bacteria, fungus, and other microorganisms. Anti-slip **inner grip strips** help prevent brace migration. **Universal gel buttress** surrounds and stabilizes kneecap to help improve patellar tracking. Flexible **steel springs** support both sides of knee, yet allow leg flexion and extension. Free nylon **mesh laundry bag** shields clothing from hook & loop straps in gym bag or washing machine.

<b>54211</b>	Black	SM	<b>54213</b>	Black	LG
<b>54212</b>	Black	MD	<b>54214</b>	Black	XL

**SIZING:** (Measure around center of knee)

<b>SM</b>	12 – 14"	30 – 35 cm
<b>MD</b>	14 – 16"	35 – 40 cm
<b>LG</b>	16 – 18"	40 – 45 cm
<b>XL</b>	18 – 20"	45 – 50 cm



S P E E D

P R E C I S I O N



LATEX FREE



### Hg80® RIGID ANKLE BRACE

U.S. Patents 4,280,489 4,287,920 4,628,945  
5,125,400 5,492,133 & Other Patents Pending

**Rigid shells** and pre-inflated **Aircast® Aircells** cushion the brace and form superior top-to-bottom medial-lateral support to help prevent injury or re-injury. Easy on **step in design** with a unique open-back rear entry for fast and easy on/off. Features an **Achilles strap** and a **heel-lock crossing strap** to lock brace in position and provide additional lateral support. **Latex-free** high performance fabric\* for all-day comfort and durability. Free nylon **mesh carry bag** shields clothing from hook & loop straps in gym bag. Hand wash only. **Specify left or right.**

<b>44311</b>	Left, SM	<b>44321</b>	Right, SM
<b>44312</b>	Left, MD	<b>44322</b>	Right, MD
<b>44313</b>	Left, LG	<b>44323</b>	Right, LG

SIZING: (According to U.S. shoe size)			
	SM	MD	LG
<b>U.S. Men's</b>	Up to 7	7.5 – 11	11.5+
<b>U.S. Women's</b>	Up to 8.5	9 – 12.5	13+

(USA SALES ONLY)

\* brace contains some neoprene  
AIRCAS® is a registered trademark of AIRCAS® LLC, Summit, NJ



### Hg80® ADJUST-TO-FIT® ANKLE BRACE

U.S. PATENT 5,814,002  
FOREIGN PATENTS CA 2,221,367 EP 0842645 DE 69722896.7 JP 3780084

Mueller-exclusive **HydraCinn® fabric** with permanently bonded antimicrobial barrier. **Moisture-wicking**, extremely soft to the touch and lightweight. Flexible **steel springs** support both sides of the ankle. Extended **free-floating tongue** with additional center lining helps protect against chafing from laces. **Lower lacing guides** help avoid bunching across talar joint maintaining comfort and flexibility. **Adjustable side panels** provide support and help avoid repeated lacing with easy side panel adjustments. **No binding under heel area** adds to comfort. Free nylon **mesh laundry bag** shields clothing from hook & loop straps in gym bag or washing machine. **Fits either foot.**

**47417** Black

**ONE SIZE FITS MOST**

Fits USA shoe sizes from women's 8 to men's 18



Custom-sized protective nylon **mesh laundry bag** is included with every Hg80® brace



C O N T R O L

A G I L I T Y





Secure **Stirrup Straps** and longer elastic crossing straps provide exceptional support via heel-lock and figure 8 configuration

**Dynamic Figure 8 Straps** add tension as the ankle moves for even more support and a secure fit



### Hg80® ANKLE BRACE w/Straps

Comfortable brace provides superior protection and support with **unique features to maximize comfort and performance**. Mueller-exclusive **HydraCinn® fabric** with permanently bonded **antimicrobial barrier** for protection against odor causing bacteria, fungus and other microorganisms. **Moisture-wicking**, extremely soft to the touch and lightweight. Secure stirrup straps and longer elastic crossing straps provide exceptional support via a heel-lock and figure 8 configuration. **Dynamic figure 8 straps** add tension as the ankle moves for even more support and a secure fit. Free nylon **mesh carry bag** shields clothing from hook & loop straps in gym bag or washing machine.

<b>42130</b>	Black	XS	<b>42133</b>	Black	LG
<b>42131</b>	Black	SM	<b>42134</b>	Black	XL
<b>42132</b>	Black	MD			

SIZING: (According to U.S. shoe size)					
	XS	SM	MD	LG	XL
<b>U.S. Men's</b>	6 – 7	7 – 9	9 – 11	11 – 13	13 – 15
<b>U.S. Women's</b>	7 – 8	8 – 10	10 – 12	12 – 14	14 – 16
<b>U.K. Men's</b>	5 – 6	6 – 8	8 – 10	10 – 12	12 – 14
<b>U.K. Women's</b>	5.5 – 6.5	6.5 – 8.5	8.5 – 10.5	10.5 – 12.5	12.5 – 14.5
<b>European Men's</b>	38 – 40	40 – 42	42 – 45	45 – 47	47 – 49
<b>European Women's</b>	36 – 39	39 – 41	41 – 43	44 – 46	46 – 48





Mueller-exclusive  
**HydraCinn® fabric**  
is latex-free and  
neoprene-free



Two sets of flexible  
**Steel Springs** over the  
top and bottom of wrist

Lightweight  
**Inner Sleeve**  
with stretch panel



**Interior Foam Pad**  
targets compression  
where it's needed

## Hg80® WRIST BRACE

Lightweight and soft brace features base sleeve with Mueller's exclusive **moisture-wicking HydraCinn® fabric** which is latex-free and neoprene-free. Permanently bonded **antimicrobial barrier** provides protection against odor causing bacteria, fungus, and other microorganisms. Two sets of flexible **steel springs** over the top and bottom of the wrist provide double protection and firm support. Inner sleeve with **stretch panel** allows for easy positioning while the adjustable **outer tension strap** secures brace in place for a comfortable fit. Allows full finger and thumb movement. Free nylon **mesh laundry bag** shields clothing from hook & loop straps in gym bag or washing machine. **Fits either hand.**

**74618** Black REG

**74619** Black LG

**SIZING:** (Measure around wrist joint)

<b>REG</b>	6 – 8"	15 – 20 cm
<b>LG</b>	8 – 9"	20 – 22 cm



Custom-sized protective nylon  
**mesh laundry bag** is included  
with every Hg80® brace

## Hg80® TENNIS ELBOW BRACE

Provides superior compression to help relieve pain and discomfort caused by tennis elbow. **Interior foam pad** targets compression exactly where it's needed – across the extensor muscle. Lightweight and soft brace features base sleeve with Mueller's exclusive **moisture-wicking HydraCinn® fabric** which is latex-free and neoprene-free for all-day comfortable wear. Permanently bonded **antimicrobial barrier** provides protection against odor causing bacteria, fungus, and other microorganisms. Free nylon **mesh laundry bag** shields clothing from hook & loop straps in gym bag or washing machine.

**74717** Black

**ONE SIZE FITS MOST**


Fits forearm circumference (near elbow) 8-15" (20-38 cm)



C O N T R O L

A G I L I T Y

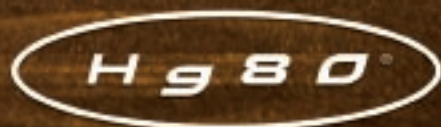




Simply the most **comfortable** braces you'll **ever** wear.

**Just gotta feel it**

Lightweight & extremely soft to the touch, the neoprene-free Hg80® moisture-wicking high performance fabric stays cool and dry so you can go all out.



**SUPERIOR FEEL • UNCOMPROMISED PERFORMANCE**

Hg80® HINGED KNEE BRACE • Hg80® KNEE BRACE • Hg80® KNEE STABILIZER • Hg80® ANKLE BRACE w/STRAPS  
Hg80® RIGID ANKLE BRACE • Hg80® ADJUST-TO-FIT® ANKLE BRACE • Hg80® WRIST BRACE • Hg80® TENNIS ELBOW BRACE



# HIGH TECH ANKLE BRACING

## High Performance ATF® Ankle Brace

U.S. PATENTS 4,727,863 6,022,332

Many braces effectively reduce excessive inversion and eversion, but hamper athletic performance such as running, speed and jumping ability. Twenty-five male athletes (age =  $16.6 \pm 0.7$  yr.) who did not have a history of ankle injury within the previous year were tested.\*

The test entailed a vertical jump, pro agility (25 yd. shuttle) and 20 yd. sprint, both braced and non-braced.

No significant differences were found between the subjects' tests — whether braced or non-braced — i.e.,  
**THE ATF® ALLOWS UNRESTRICTED FOOT MOVEMENT.**

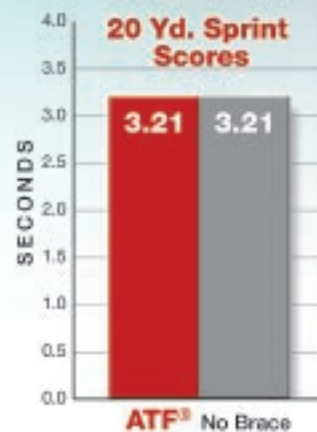
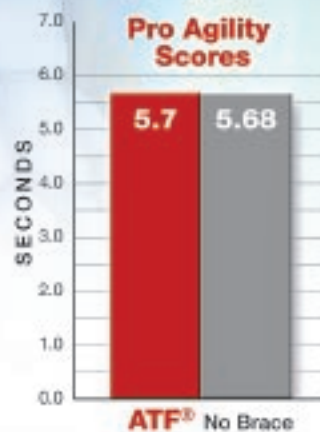
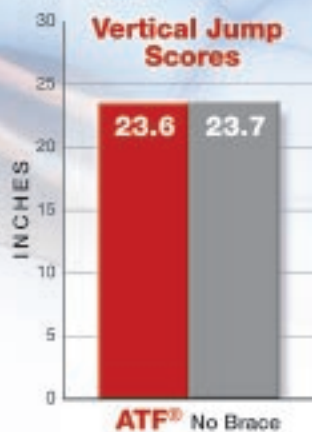
\* Study available upon request



### INDEPENDENT TEST RESULTS

Independent test results show the **Mueller ATF® Ankle Brace** does not hamper jumping, speed, or agility.

**The ATF® allows unrestricted foot movement.**





## MUELLER ATF® Ankle Braces

- **Patented Inner Strap** (*dashed lines, left*) extends over the **Anterior Talofibular Ligament** (the ligament most likely to be sprained or strained) for superior lateral support.
- **Comfort Windows™** A single layer of fabric over ankle bones provides a more comfortable fit.
- **Bi-directional stretch elastic** (*Pro Level™ ATF®*) over the Achilles tendon allows complete plantar and dorsal flexion.
- **Flexible steel springs** help support both sides of the ankle.
- **High strength 1000 denier polyester material** (stronger than vinyl) eliminates the need for metal eyelets.

### High Performance ATF® ANKLE BRACE

U.S. PATENTS 4,727,863 6,022,332

Custom left or right fitted brace is designed to conform to the arch of the foot for precise fit and no bulk. Vertical stretch elastic and horizontal stretch elastic over the Achilles tendon allow complete plantar and dorsal flexion. **Brace allows for unrestricted foot movement for jumping, speed, and agility. Specify left or right.**

**200 Left White XS – XXL      201 Left Black XS – XXL**  
**205 Right White XS – XXL      206 Right Black XS – XXL**

(XXL available for 200-205/201-206 ONLY, see sizing chart below)

### Pro Level™ ATF® ANKLE BRACE w/Universal Fit

U.S. PATENT 7,014,621 EP3731432 Other U.S. & Foreign Patents Pending

Patented Inner Strap (*inset, far left*) self-adjusts to each individual foot for superior protection against inversion sprains. **Fits either foot.**

**212 White XS – XL**



### BILATERAL ANKLE BRACE

U.S. PATENT 5,681,271

Lightweight brace fits either foot. Helps prevent injury and provides excellent support for sprained or weakened ankles. Strong 1000 denier polyester material eliminates need for metal eyelets. Flexible steel springs help protect both sides of ankle. **Conforming Curve™** gives increased support and comfortable, tight fit during all movements. **MT Flexfit™** allows arch area to expand without pinching. **Fits either foot.**

**208 White XS – XL      211 Black XS – XL**



### Soccer ANKLE BRACE

Used by national soccer teams worldwide. High front cut and narrow bottom allow more foot movement. Supportive steel springs help protect against inversion sprains. Single layer of fabric over ankle bones provides a more comfortable fit. Full back elastic for Achilles tendon comfort. Strong 1000 denier nylon material eliminates need for metal eyelets. Excellent for racquet sports, running, wrestling, gymnastics and cheerleading. **Fits either foot.**

**210 White XXS – XL      209 Black XXS – XL**

MUELLER ANKLE BRACES & SUPPORTS SIZING: (According to shoe size)						
	XXS	XS	SM	MD	LG	XL
<b>U.S. Men's</b>	4 – 5	6 – 7	7 – 9	9 – 11	11 – 13	13 – 15
<b>U.S. Women's</b>	5 – 6	7 – 8	8 – 10	10 – 12	12 – 14	14 – 16
<b>U.K. Men's</b>	3 – 4	5 – 6	6 – 8	8 – 10	10 – 12	12 – 14
<b>U.K. Women's</b>	3.5 – 4.5	5.5 – 6.5	6.5 – 8.5	8.5 – 10.5	10.5 – 12.5	12.5 – 14.5
<b>European Men's</b>	36 – 38	38 – 40	40 – 42	42 – 45	45 – 47	47 – 49
<b>European Women's</b>	35 – 36	36 – 39	39 – 41	41 – 43	44 – 46	46 – 48

(Soccer only)

(200-205/201-206 ONLY)

XXL
15 – 17
16 – 18
14 – 16
14.5 – 16.5
49 – 51
48 – 50



### Soft ANKLE BRACE w/Straps

Comfortable lightweight brace helps prevent ankle injuries and protects weak or injured ankles. **Secure stirrup straps (A) provide support on both sides of the ankle while the adjustable non-stretch stabilizing straps (B) imitate effects of taping the ankle.** Strong 1000 denier polyester material eliminates need for metal eyelets. Lighter than comparable braces on the market, and fits in most shoe styles. Easy on/off. **Fits either foot.**

**213** Black XS – XL (sizing chart on page 25)



### Adjust-to-Fit® ANKLE BRACE

U.S. PATENT 5,814,002  
FOREIGN PATENTS CA 2,221,367 EP 0842645 DE 69722896.7 JP 3780084

**Revolutionary one-size design with patented adjustable side panels for support, comfort and a perfect fit.** Brace allows full range of movement while flexible steel springs protect both sides of ankle. Features reinforced eyelets, fully trimmed edges and a nylon tricot/foam lining. Lightweight and comfortable for all-day wear, and fits in most shoe styles. **Fits either foot.**

**4572** White **4571** Black

**ONE SIZE FITS MOST** Fits USA shoe sizes from women's 6 to men's 18



### AIRCAST® SPORT ANKLE BRACE

U.S. PATENT 4,287,920 4,287,920 4,628,945 5,125,400 5,492,133 & OTHER PATENTS PENDING

The AIRCAST® Sport Ankle Brace provides exceptional support for the prevention of ankle injury. Pre-inflated aircells cushion the interior of the brace and conform to the contour of the ankle. Semi-rigid shells from the exterior of the brace and are designed for both comfort and support. Brace can be customized by adjusting straps, heel pad or aircells.

**Specify left or right.**

**4561** Left White

**4566** Right Black

**ONE SIZE FITS MOST**

Fits USA shoe sizes from women's 6 to men's 18

**(USA SALES ONLY)**

AIRCAST® is a registered trademark of AIRCAST® LLC, Summit, NJ



### LITE™ ANKLE BRACE

Lightweight and comfortable, hinged brace provides maximum protection with full ankle flexibility. Padded, rigid side supports help guard against inversion sprains, while hinges allow full range of motion. Features one strap for easy on/off. Fits in most shoe styles. **Fits either foot.**

**4554** White

**4552** Black

**ONE SIZE FITS MOST** Fits USA shoe sizes from women's 6 to men's 18



### GEL•BRACE Cold Therapy

Extremely light, adjustable brace helps prevent inversion sprains without restricting movement. Upper chamber is air filled, conforms to calf. The lower chamber is gel filled to mold to the ankle for a custom fit. The easily removed gel pads can be placed in the freezer or on ice for cold therapy treatment to an injured ankle. **Fits either foot.**

**4556** White

**ONE SIZE FITS MOST** Fits USA shoe sizes from women's 6 to men's 18





### Adjustable ANKLE SUPPORT

U.S. PATENT 5,472,414

Patented strapping system with criss-cross tension straps provides firm and even support to weak or sore ankles. The sectional design minimizes slippage and bunching and allows a custom fit to the arch area as well as the ankle. Seamless design helps prevent irritation or chafing and the open heel allows for a snug, comfortable fit. Lightweight and fits in most shoe styles. **Fits either foot.**

**4547** Black

**ONE SIZE FITS MOST**

Fits USA shoe sizes from women's 4½ to men's 13



### LACE-UP ANKLE BRACE

Cool, breathable canvas provides light support for continued activity and protection. Flexible steel springs help stabilize both sides of ankle. Padded tongue adds to comfortable fit. **Fits either foot.**

**218** White XS – XL (sizing chart on page 25)



### ANKLE SUPPORT w/Straps

Elastic straps provide dynamic tension with full range of movement. Criss-cross strapping helps provide stability to the ankle, yet is extremely lightweight and low profile. Retains body heat to promote healing and flexibility. Full coverage provides nonrestricting support, compression and warmth for weak or injured ankles.

**965** Black SM – XL (sizing chart on page 25)



### ANKLE SUPPORT Neoprene Blend

Nonrestricting support when soothing warmth and light compression are desired around ankle. Stretch nylon on both sides for easy on/off. **Fits either foot.**

**964** Black SM – XL (sizing chart on page 25)



### ANKLE SUPPORT Elastic

Unique knit provides firm support and allows full range of movement during activity. Contour design for proper fit. Breathable fabric with reinforced edges for comfort and durability. **Fits either foot.**

**963** Black SM – XL (sizing chart on page 25)

**962** Beige SM – XL (sizing chart on page 25)



### Soccer ANKLE SUPPORT

U.S. PATENT 5,472,414

Extremely lightweight and comfortable. **Allows full range foot movement** while providing compression and support. The criss-cross tension straps and sectional design allow a custom fit to the arch area as well as the heel for firm support with minimum slippage and bunching. **Fits either foot.**

**4549** Black

**ONE SIZE FITS MOST**

Fits USA shoe sizes from women's 4½ to men's 13



### ANKLE SUPPORT Neoprene Blend

Lightweight and comfortable support with wraparound design for easy on and off. Soft neoprene blend provides even compression and soothing warmth. Fully adjustable and comfortable for all-day wear. **Fits either foot.**

**4541** Black **4546** Beige

**ONE SIZE FITS MOST**

Fits USA shoe sizes from Women's 5 to Men's 13



# Over 5 decades of proven performance.

**Look closely** at the game you're watching on a Saturday or Sunday afternoon and you'll see Mueller. The innovation behind our top athlete-endorsed No Glare™ Glare-Reducing Strips is the same innovation that drives the patented technology behind all Mueller products. Our tried & tested products have proven themselves in America's athletic training rooms for over 5 decades.



*Built to perform.™*



Cold Therapy

Grip Enhancers

Soccer Ankle Brace

Calf/Shin Splint Support

Jumper's Knee Strap

Thigh Support

Mueller Strapguard™

Wrist Sleeve

Tennis Elbow Support



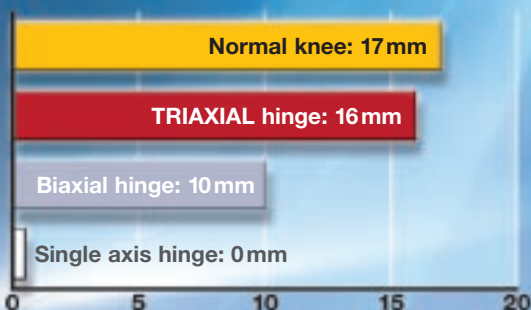
# HIGH TECH KNEE BRACING

## Advanced Hinge Design

Single axis and polycentric hinges were designed prior to research that measured the geometric characteristics of knee motion. All other hinges, regardless of misleading product names like "multicentric," are still simple single axis or double axis hinges which are proven to promote a mechanical mismatch that induces brace migration.



Millimeters of posterior movement from 0° to 120° of flexion



## HINGE COMPARISON

Comparison of brace hinge design using full-sized sagittal plane plexiglass models of the knee shows that the simplistic movement of single axis and polycentric hinges are incompatible with the complex motion generated by the knee.

## Only **MUELLER** has the patented **TRIAXIAL HINGE**

U.S. PATENTS 4,573,455 4,726,362 4,844,057

**Triaxial Hinge** properly tracks the knee joint.

**Triaxial Hinge** produces near-normal joint motion of the knee.

This is the only hinge that can recapture 16mm of posterior shift of the instant center of the knee.\*

**NO OTHER BRACE can make this claim.**

\* Study available upon request



### TRIAXIAL HINGE

The instant center is always posterior of the central axis and reproduces the near-normal posterior pathway of the knee.



### POLYCENTRIC HINGE

(BIAXIAL HINGE)

Two centers of rotation allow only minimal posterior displacement.



### SINGLE AXIS HINGE

Hinge design is fixed at the center pivot and exhibits no posterior displacement.



### PRO LEVEL™ HINGED KNEE BRACE DELUXE

U.S. PATENTS 4,573,455 4,726,362 4,844,057

**Fits up to 28" thighs! Triaxial Hinges** produce near-normal knee motion, allow full mobility and provide maximum medial lateral support and protection in all sports or activities. Brace includes lock out option for complete immobilization and adjustable extension stops for limited range of motion if used as a rehab brace.

Features wraparound design for easy on/off, adjustable straps above and below the knee and six sizes SM–XXXL for a custom fit. The removable patella buttress can be modified as needed and the open back helps eliminate bunching behind the knee. Extra long (16") for maximum stability and protection.

**5333** Retail Pack (clamshell) MD – XXL  
**B5333** Bulk (in plastic bag) SM – XXXL

**SIZING:** (Measure 7" above center of knee and 7" below center of knee — if measurements indicate two different sizes, choose larger size)

	THIGH	CALF
<b>SM</b>	17 – 18" 43 – 45 cm	13 – 14" 33 – 35 cm
<b>MD</b>	19 – 20" 48 – 50 cm	14 – 15" 35 – 38 cm
<b>LG</b>	21 – 22" 53 – 55 cm	15 – 16" 38 – 40 cm
<b>XL</b>	23 – 24" 58 – 60 cm	16 – 17" 40 – 43 cm
<b>XXL</b>	25 – 26" 63 – 66 cm	17 – 18" 43 – 45 cm
<b>XXXL</b>	27 – 28" 68 – 71 cm	18 – 19" 45 – 48 cm



### HINGED WRAPAROUND KNEE BRACE

U.S. PATENTS 4,573,455 4,726,362 4,844,057

**The ideal brace for weak or injured knees needing maximum medial/lateral support without restricting mobility.** Wraparound design allows easy on/off, while the open back helps eliminate bunching behind the knee.

Patella buttress stabilizes and protects the kneecap. Adjustable straps provide custom fit and controlled compression. Fully trimmed edges with smooth seams help prevent irritation and chafing.

**3333** Black REG, LG or XL

**SIZING:** (Measure around center of knee)

<b>REG</b>	12 – 16"	30 – 40 cm
<b>LG</b>	16 – 20"	40 – 50 cm
<b>XL</b>	20 – 24"	50 – 60 cm



### HINGED KNEE BRACE

U.S. PATENTS 4,573,455 4,726,362 4,844,057

**Triaxial Hinges** provide maximum support and protection and help prevent hyper-extension of the knee. Patella buttress stabilizes and protects the kneecap. Opposing adjustable front and back straps hold brace in place. Contoured construction for comfortable fit minimizes bulk behind knee joint. Nylon lining for comfort. Fully trimmed edges for durability.

**2333** Black SM – XXL

**SIZING:** (Measure around center of knee)

<b>SM</b>	12 – 14"	30 – 35 cm
<b>MD</b>	14 – 16"	35 – 40 cm
<b>LG</b>	16 – 18"	40 – 45 cm
<b>XL</b>	18 – 20"	45 – 50 cm
<b>XXL</b>	20 – 22"	50 – 55 cm



**REDESIGNED****MuellerHinge™ 2100**

U.S. PATENTS 4,573,455 4,726,362 4,844,057

**The new and redesigned MuellerHinge™ 2100 now fits either leg right out of the package — no need to set the brace for right or left leg.** Secondary compression straps help hold the upper and lower cuffs in place and improved hinge adhesion to the cuffs adds durability. The lengthened hinge cover with a hook/loop connection holds the hinge cover in place and has been strengthened for durability. The hinge pockets also have been strengthened.

**Designed to help protect the knee from lateral blows in all positions,** the MuellerHinge™ helps protect the medial collateral ligament and helps reduce the possibility of hyperextension injuries. The Triaxial Hinge literally tracks the knee motion and allows maximum mobility.

**Fits either knee.**

**2100** Retail Pack (clamshell)  
Black 12" hinge (30 cm)

**B2100** Bulk (in plastic bag)  
Black 12" hinge (30 cm)

**ONE SIZE FITS MOST**

Wraps fit thighs or calves 10-26" (25-66 cm)

**WRAPAROUND  
KNEE BRACE Deluxe**

Uniquely designed brace helps prevent common knee injuries, protects unstable knees and allows an adjustable custom fit. Crossing straps and patella opening help stabilize the kneecap. Flexible steel springs support both sides of the knee yet allow leg flexion and extension. Easy to apply wrap-around design. Lightweight and comfortable, with lock-stitch taped seams and fully trimmed edges for durability.

**230** Black SM – XXL

SIZING: (Measure 3" above center of knee)		
<b>SM</b>	13½ – 14½"	34 – 36 cm
<b>MD</b>	14½ – 17½"	36 – 44 cm
<b>LG</b>	17½ – 18½"	44 – 46 cm
<b>XL</b>	18½ – 20"	46 – 50 cm
<b>XXL</b>	20 – 21½"	50 – 54 cm

**WRAPAROUND  
KNEE BRACE Adjustable**

A lightweight version of the **Wraparound Knee Brace Deluxe** but with the same features and unique design for support and protection as the deluxe. Soft neoprene blend retains body heat for soothing warmth to help relieve pain and keep knee joint flexible. Two sizes for adjustable comfort and fit.

**231** Black REG or LG  
**232** Beige REG or LG

SIZING: (Measure around center of knee)		
<b>REG</b>	12 – 16"	30 – 40 cm
<b>LG</b>	16 – 20"	40 – 50 cm



### PATELLA STABILIZER KNEE BRACE w/Universal Buttress

For chronic and unstable knees, relief of irritated kneecap, patellar tendon strains, and arthritic knees where lateral firmness is indicated. Supportive steel springs and kneecap buttress help protect the patella during activity or while recovering from injury. Opposing adjustable front straps hold brace in place.

**2313** Black SM – XXL

**SIZING:** (Measure around center of knee)

<b>SM</b>	12 – 14"	30 – 35 cm
<b>MD</b>	14 – 16"	35 – 40 cm
<b>LG</b>	16 – 18"	40 – 45 cm
<b>XL</b>	18 – 20"	45 – 50 cm
<b>XXL</b>	20 – 22"	50 – 55 cm



### ADJUSTABLE KNEE SUPPORT

U.S. PATENT 5,472,413

Patented strapping system allows a custom fit above and below the knee for adjustable compression and all-day comfort. Provides support without restricting movement. Features double layer around the knee for extra protection, contour design to minimize bunching behind the knee, and fully trimmed edges with smooth seams to prevent chafing. Soft neoprene blend adds soothing warmth to help keep joints flexible.

**4531** Black

**ONE SIZE FITS MOST**

Fits 12-21" knees (30-53 cm)



### SELF-ADJUSTING KNEE STABILIZER

PATENT PENDING

Designed with unique features to maximize comfort and performance. Criss-crossing elastic straps above and below the knee provide self-adjusting support and compression while the new softer, perforated fabric increases breathability for comfortable all-day wear. A double inferior buttress helps support the kneecap and assists with proper tracking of the patella. Flexible steel springs further help support both sides of the knee and the wraparound design allows easy on/off.

**56427** Black

**ONE SIZE FITS MOST**

Fits 12-16" knees (30-40 cm)

### PATELLA STABILIZER Neoprene Blend

Ideal for injured knees and arthritic knee conditions when firm lateral support is indicated. Flexible steel springs help support both sides of the knee, while the soft neoprene blend provides soothing warmth. Lightweight and comfortable for all-day wear. Wraparound design for adjustable fit and easy on/off.

**4539** Black

**4538** Beige

**ONE SIZE FITS MOST**

Fits 12-25" knees (30-63 cm)





### CHO PAT® DUAL ACTION KNEE STRAP

U.S. PATENT 6,402,712

Patented strap gives an extra dimension of relief for painful and weakened knees. It further strengthens the kneecap mechanism by applying pressure on the tendon above the kneecap as well. Dependable and durable. Allows full mobility. **Fits left or right.**

**985** Black SM – LG

#### SIZING: (Measure around center of knee)

<b>SM</b>	12 – 14"	30 – 35 cm
<b>MD</b>	14 – 16"	35 – 40 cm
<b>LG</b>	16 – 18"	40 – 45 cm



### KNEE BRACE Elastic

Latex-free and neoprene-free lightweight brace provides support for stiff, weak or sore knees. Flexible steel springs on both sides offer moderate medial/lateral support without restricting mobility. Wraparound design with adjustable straps allows controlled compression and a custom fit. Breathable elastic material and soft inner lining provide comfort for all-day wear. Fully trimmed edges & smooth seams help prevent irritation and chafing.

**4540** Black SM/MD or LG/XL

#### SIZING: (Measure around center of knee)

<b>SM/MD</b>	12 – 16"	30 – 40 cm
<b>LG/XL</b>	16 – 20"	40 – 50 cm



### CHO PAT® KNEE STRAP

U.S. PATENTS 4,334,528 D265590  
CANADIAN PATENT 48053

The original patented knee strap designed by an orthotist and recommended by medical professionals to relieve knee pain. Helps proper tracking of patella and relieves harmful pressure on knee cap. Easy to use, adjustable and comfortable for all-day wear.

**982** Beige XS – XL

#### SIZING: (Measure around leg just below knee)

<b>XS</b>	8 – 10"	20 – 25 cm
<b>SM</b>	10 – 13"	25 – 33 cm
<b>MD</b>	13 – 15"	33 – 38 cm
<b>LG</b>	15 – 17"	38 – 43 cm
<b>XL</b>	17 – 19"	43 – 48 cm

CHO PAT® is a registered trademark of CHO PAT® Incorporated, Hainesport, NJ



### KNEE STABILIZER Elastic

This lightweight stabilizer provides support for stiff, weak, or sore knees. Flexible steel springs offer medial/lateral support. The elastic material is breathable and comfortable for all-day wear to help reduce swelling without limiting mobility.

**427** Black SM/MD or LG/XL

#### SIZING: (Measure around center of knee)

<b>SM/MD</b>	12 – 16"	30 – 40 cm
<b>LG/XL</b>	16 – 20"	40 – 50 cm



### JUMPER'S KNEE STRAP

Mueller's Knee Strap features a tubular insert which provides focused mild pressure on the tendon below the kneecap to help guide the patella. Ideal relief for patellar tendonitis caused by frequent running and jumping, irritated kneecap and Osgood-Schlatter's Disease. Strap is fully adjustable and comfortable for all-day wear.

#### Team Colors!

- 991** Red
- 992** Black
- 993** Blue
- 994** Gold
- 995** Green
- 996** Orange
- 997** Pink



#### ONE SIZE FITS MOST

Fits 10-22" knees  
(25-55 cm)



### KNEE SUPPORT ELASTIC

Unique knit allows full range of motion. Contour design provides proper fit and comfort. Reinforced edges for durability.

- 425** Black SM – XL
- 426** Beige SM – XL

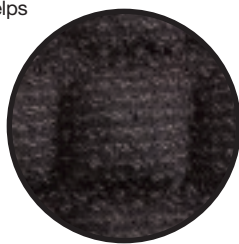
#### SIZING: (Measure around center of knee)

<b>SM</b>	12 – 14"	30 – 35 cm
<b>MD</b>	14 – 16"	35 – 40 cm
<b>LG</b>	16 – 18"	40 – 45 cm
<b>XL</b>	18 – 20"	45 – 50 cm



### Pro Level™ KNEE PAD w/Kevlar®

Lightweight, non-restricting knee pad cushions the knee from shocks or bumps while providing constant compression and retaining soothing body heat. The thick inner foam pad provides superior protection with an outer covering made with Kevlar® fibers for long-lasting durability. The contour design helps minimize bunching behind the knee for a comfortable fit. A super stretch back panel further improves fit and comfort. Smooth seams and stretch nylon edges help prevent chafing. The reinforced seams increase strength and durability.



<b>54530</b>	Black	XS	<b>54533</b>	Black	LG
<b>54531</b>	Black	SM	<b>54534</b>	Black	XL
<b>54532</b>	Black	MD	<b>54535</b>	Black	XXL

#### SIZING: (Measure around center of knee)

<b>XS</b>	10 – 12"	25 – 30 cm
<b>SM</b>	12 – 14"	30 – 35 cm
<b>MD</b>	14 – 16"	35 – 40 cm
<b>LG</b>	16 – 18"	40 – 45 cm
<b>XL</b>	18 – 20"	45 – 50 cm
<b>XXL</b>	20 – 22"	50 – 55 cm

Kevlar® is a registered trademark of E. I. du Pont de Nemours and Company, Wilmington, DE



**NEW!**

### SHOKK™ KNEE PADS

Lightweight knee pads feature a contour design and built-in stretch panel to minimize bunching at the knee joint for a comfortable fit. Abrasion resistant material covers the foam pad for long-lasting durability. Reinforced seams and stretch nylon-trimmed edges help prevent chafing. **Sold in pairs.**

<b>54600</b>	Black	XS	<b>54603</b>	Black	LG
<b>54601</b>	Black	SM	<b>54604</b>	Black	XL
<b>54602</b>	Black	MD	<b>54605</b>	Black	XXL

#### SIZING: (Measure around center of knee)

<b>XS</b>	10 – 12"	25 – 30 cm
<b>SM</b>	12 – 14"	30 – 35 cm
<b>MD</b>	14 – 16"	35 – 40 cm
<b>LG</b>	16 – 18"	40 – 45 cm
<b>XL</b>	18 – 20"	45 – 50 cm
<b>XXL</b>	20 – 22"	50 – 55 cm



### VOLLEYBALL KNEE PADS

Wide polyurethane foam pad provides enhanced flexibility, fit and cushioned protection. Extra durable pads with solid back, knitted and woven fabrics for comfort. **Fits men and women.**

**4534** White One Pair

**ONE SIZE FITS MOST** Fits 12-18" knees (30-45 cm)

### KNEE PADS

Foam pads are contoured at joint for good fit and easy movement. Longer length pad protects upper shins. Elastic knit helps prevent slipping. Reinforced edges for durability.

**4535** Black One Pair

**ONE SIZE FITS MOST** Fits 12-17" knees (30-43 cm)



### KNEE SLEEVES Neoprene Blend

Extra long sleeves with contour design for comfort and proper fit. Soft neoprene blend delivers even compression and soothing warmth. Stretch nylon on both sides for easy on/off. Lock-stitch taped seams and fully trimmed edges for durability. The open patella helps relieve pressure on kneecap.

<b>434</b>	<b>Open Patella</b>	Black	SM – XL
<b>424</b>	<b>Closed Patella</b>	Black	SM – XL

#### SIZING: (Measure around center of knee)

<b>SM</b>	12 – 14"	30 – 35 cm
<b>MD</b>	14 – 16"	35 – 40 cm
<b>LG</b>	16 – 18"	40 – 45 cm
<b>XL</b>	18 – 20"	45 – 50 cm



### KNEE SUPPORTS Neoprene Blend

Firm comfortable support for minor sprains, strains and arthritic knee conditions. Wraparound design for adjustable compression and easy on/off. Soothing neoprene warmth helps keep joints flexible. Open patella helps relieve pressure on the kneecap.

<b>4532</b>	<b>Open Patella</b>	Black
<b>4536</b>	<b>Open Patella</b>	Beige
<b>4533</b>	<b>Closed Patella</b>	Black
<b>4537</b>	<b>Closed Patella</b>	Beige

**ONE SIZE FITS MOST**

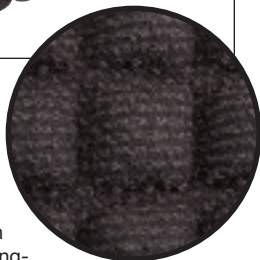
Fits 12-25" knees (30-63 cm)





### Pro Level™ ELBOW PAD w/Kevlar®

Lightweight, non-restricting elbow pad cushions the elbow from shocks or bumps while providing constant compression and retaining soothing body heat. The thick inner foam pad provides superior protection with an outer covering made with Kevlar® fibers for long-lasting durability. The contour design helps minimize bunching near the elbow for a comfortable fit. A super stretch panel on the inner side of elbow joint further improves fit and comfort. Smooth seams and stretch nylon edges help prevent chafing. The reinforced seams increase strength and durability.



- 76000** Black, XS
- 76001** Black, SM
- 76002** Black, MD
- 76003** Black, LG
- 76004** Black, XL
- 76005** Black, XXL

#### SIZING: (Measure around elbow)

<b>XS</b>	8½ – 9½"	21 – 24 cm
<b>SM</b>	9½ – 10½"	24 – 26 cm
<b>MD</b>	10½ – 11½"	26 – 29 cm
<b>LG</b>	11½ – 12½"	29 – 31 cm
<b>XL</b>	12½ – 14"	31 – 35 cm
<b>XXL</b>	14 – 16"	35 – 40 cm

Kevlar® is a registered trademark of E. I. du Pont de Nemours and Company, Wilmington, DE



**USED BY THE PROS**

### ELBOW SLEEVE Padded

Our most effective, comfortable elbow sleeve. Contoured neoprene sleeve with uniquely stitched buttress pad cushions and protects the elbow. Thinner, textured neoprene on inner side of elbow joint helps players grip football. Allows full flexibility.

**417** Black

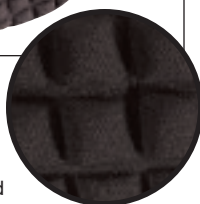
#### SIZING: (Measure around elbow)

<b>SM / MD</b>	7 – 12"	17 – 30 cm
<b>LG / XL</b>	12 – 15"	30 – 38 cm
<b>XXL / XXXL</b>	15 – 17"	38 – 43 cm



### SHOKK™ ELBOW PADS

Lightweight elbow pads feature a contour design and built-in stretch panel to minimize bunching near the elbow for a more comfortable fit. Abrasion resistant material covers the foam pad for long-lasting durability. Reinforced seams and stretch nylon-trimmed edges help prevent chafing. **Sold in pairs.**



- 74600** Black XS      **74603** Black LG
- 74601** Black SM      **74604** Black XL
- 74602** Black MD      **74605** Black XXL

#### SIZING: (Measure around elbow)

<b>XS</b>	8½ – 9½"	21 – 24 cm
<b>SM</b>	9½ – 10½"	24 – 26 cm
<b>MD</b>	10½ – 11½"	26 – 29 cm
<b>LG</b>	11½ – 12½"	29 – 31 cm
<b>XL</b>	12½ – 14"	31 – 35 cm
<b>XXL</b>	14 – 16"	35 – 40 cm



### Professional ELBOW SLEEVE

Anti-slip outer surface helps deliver ultimate ball control while the thin profile does not interfere with arm movement. Helps protect elbows from abrasions and turf burns. Contour design for custom fit and nylon lining for comfort and easy on/off. **Fits left or right elbow.**

**410** Black      YTH – LG

#### SIZING: (Measure around elbow)

<b>YTH</b>	9 – 11"	22 – 27 cm
<b>REG</b>	11 – 14"	27 – 35 cm
<b>LG</b>	14 – 17"	35 – 43 cm



### TURF SLEEVE

Tapered elastic elbow sleeve helps protect elbows and forearms from abrasions and turf burns. Lightweight breathable fabric provides comfort. The sleeve is 11 inches long for extra protection. Ideal for football, baseball and other turf sports. Can be worn on legs for calf/shin protection.

- 4116** White      LG or XL      One pair
- 4111** Black      LG or XL      One pair

#### SIZING: (Measure around elbow)

<b>LG</b>	12 – 13"	30 – 33 cm
<b>XL</b>	13 – 15"	33 – 38 cm



### ELBOW PADS

Foam pads contoured at joint give good fit and easy movement. Longer length pad helps protect forearms from bumps, bruises and friction burns. Elastic knit sleeve prevents slipping. Strong facing and reinforced edges for durability. Ideal for volleyball, baseball, basketball, field hockey and football.

**4525** Black One Pair

#### ONE SIZE FITS MOST

Fits elbow circumference 11-18" (27-45 cm)



### GOLFER'S ELBOW SUPPORT

Firm adjustable support helps provide effective relief of lateral elbow pain associated with medial epicondylitis of the elbow or Golfer's Elbow. Lightweight, durable and comfortable support for all-day wear.

**78197** Black

**78207** Beige

#### ONE SIZE FITS MOST

Fits elbow circumference 7-14" elbows (17-35 cm)



### CHO PAT® TENNIS ELBOW STRAP

Unique extended tongue molds to the forearm for pressure to appropriate area. Delivers comfortable compression to help relieve tennis elbow pain. Ideal for all activities involving strain on forearm muscles.

**984** Beige

#### ONE SIZE FITS MOST

Fits elbow circumference 10-14" (25-35 cm)



### ELBOW SLEEVE Neoprene Blend

Extra long sleeve with contour design for comfort and proper fit. Stretch nylon on both sides for easy on/off, with lock-stitch taped seams and reinforced edges for durability.

**414** Black SM - XL

#### SIZING: (Measure around elbow)

<b>SM</b>	7 - 10"	17 - 25 cm
<b>MD</b>	10 - 12"	25 - 30 cm
<b>LG</b>	12 - 13"	30 - 33 cm
<b>XL</b>	13 - 15"	33 - 38 cm



### TENNIS ELBOW SUPPORT Neoprene Blend

Adjustable support strap provides comfortable compression to help relieve elbow pain. Excellent for gardening, golf, bowling, tennis and all activities involving strain on forearm muscles. Light-weight, durable and comfortable for all-day wear.

**819** Black

**820** Beige

#### ONE SIZE FITS MOST

Fits elbow circumference 7-14" elbows (17-35 cm)



### ELBOW SUPPORT Elastic

Unique knit allows full range of movement. Contour design for proper fit and comfort. Extra length and reinforced edges.

**415** Black SM - XL

**416** Beige SM - XL

#### SIZING: (Measure around elbow)

<b>SM</b>	7 - 10"	17 - 25 cm
<b>MD</b>	10 - 12"	25 - 30 cm
<b>LG</b>	12 - 13"	30 - 33 cm
<b>XL</b>	13 - 15"	33 - 38 cm



### AIRCRAFT® TENNIS ELBOW SUPPORT

U.S. PATENT 4,628,918

Provides 50% more pressure where it counts. The AIRCAST® Tennis Elbow Support works because the aircell concentrates compression on the extensor muscle, not around the arm. This means more support, less constriction.

**4528** Black

**4527** Beige

#### ONE SIZE FITS MOST

Fits elbow circumference 13" elbows (33 cm)

(USA SALES ONLY)

AIRCRAFT® is a registered trademark of AIRCAST® LLC, Summit, NJ

### ELBOW SUPPORT Neoprene Blend

Firm comfortable support helps relieve elbow pain and strain. Wraparound design for easy fit and adjustable compression. Soothing neoprene warmth helps keep elbow joints flexible.

**4521** Black

**4526** Beige

#### ONE SIZE FITS MOST

Fits elbow circumference 10-18" (25-45 cm)



### ARM SLING Adjustable

Provides general arm support and restricts movement to assist in healing sore or injured arms and elbows. The adjustable shoulder strap with pad allows for a custom, comfortable fit. Supports left or right arm.

**4601** Blue

#### ONE SIZE FITS MOST

CHO PAT® is a registered trademark of CHO PAT® Incorporated, Hainesport, NJ





### COMFORT® WRIST STABILIZER

U.S. PATENT 7,175,603

Designed to help relieve hand and wrist pain caused by Carpal Tunnel Syndrome, tendonitis and arthritis by gently immobilizing the hand and wrist in a neutral, comfortable position **for all day and night wear**. Maximum protection without restricting finger & thumb movement is provided by an extra-long adjustable aluminum spoon supporting the hand and wrist from below while a second rigid spoon supports from above. Unique adjustable straps customize fit. Cushioned palm and breathable fabrics add extra comfort for extended use. **BONUS** – Soft pillow attaches to top of brace for more comfortable use while sleeping. **Fits either hand.**

**311** Beige **312** Black

**ONE SIZE FITS MOST**

Fits 5-9" wrists (12-22 cm)



### WRIST BRACE

Unique contour design over wrist joint with supportive steel springs helps keep wrist in natural straight position. Adjustable wraparound strap and lightweight materials provide fit and comfort. **Fits either hand.**

**222** Black **221** Beige

**ONE SIZE FITS MOST**

Fits 7-10" wrists (17-25 cm)



### WRIST STABILIZER

Extra-long (6½") aluminum spoon and two side splints provide maximum support to weak or injured wrists. Soft, breathable fabric allows comfortable all day wear. Can also be used as a night splint. Two adjustable straps give a custom fit. Padding around the removable spoon adds extra comfort. Allows free finger movement. **Fits either hand.**

**307** Beige SM/MD

**308** Beige LG/XL

**SIZING:** (Measure around wrist joint)

<b>SM/MD</b>	5 – 8"	12 – 20 cm
<b>LG/XL</b>	8 – 10"	20 – 25 cm



### WRIST BRACE

U.S. PATENT 4,584,993

Provides firm adjustable support and helps prevent wrist injury. Four steel springs support wrist. Wraparound design with adjustable thumb strap allows full thumb and finger movement. Lightweight, breathable fabric for comfort. Excellent alternative to wrist taping.

**Specify left or right.**

**220** Left Black

**225** Right Black

**ONE SIZE FITS MOST**

Fits 7-10" wrists (17-25 cm)



### WRIST BRACE w/Splint

Ideal for Carpal Tunnel Syndrome and weak or injured wrists. Removable splint immobilizes wrist in natural position. Relieves pain and helps prevent re-injury. Adjustable wrist tabs and wraparound strap gives perfect fit and direct compression around the wrist. Lightweight materials provide comfort.

**Fits either hand.**

**300** Black **306** Beige

**ONE SIZE FITS MOST**

Fits 6-9" wrists (15-22 cm)



### ULTRA-LITE™ CARPAL TUNNEL WRIST BRACE

U.S. PATENT 6,102,880

The lightest wrist splint of its type available. Unique design does not hinder finger motion. Helps prevent Carpal Tunnel Syndrome and supports weak or injured wrists.

**Fits either hand.**

**303** Beige

**ONE SIZE FITS MOST**

Fits 6-10" wrists (15-25 cm)



### WRIST SUPPORT WRAP

Designed to help support weak or injured wrists while maintaining full range of movement. Soft neoprene blend retains soothing body heat to help relieve pain, promote healing and keep wrist flexible. Thumb loop for easy application and adjustment. Perforated fabric increases breathability for comfortable all-day wear.

**Fits either hand.**

**4505** Black

**ONE SIZE FITS MOST**

Fits 6-12" wrists (15-30 cm)



### WRIST SLEEVE Neoprene Blend

Reversing tabs secure sleeve around wrist for support and minimum sliding during activity. Ideal for wrist sprains and arthritic wrists.

**400** Black SM – XL

**SIZING:** (Measure wrist circumference)

<b>SM</b>	6 – 7"	15 – 17 cm
<b>MD</b>	7 – 8"	17 – 20 cm
<b>LG</b>	8 – 9"	20 – 22 cm
<b>XL</b>	Over 9"	Over 22 cm



### WRIST SUPPORT Neoprene Blend

Wraparound design for adjustable support and fit. Soft neoprene blend provides soothing warmth to help keep wrist flexible. Easy on/off.

**Fits either hand.**

**4511** Black **4516** Beige

**ONE SIZE FITS MOST**

Fits 6-12" wrists (15-30 cm)



### WRIST SUPPORT w/Loop Elastic

Wraparound support provides adjustable compression to weak or injured wrists. Non-restricting design helps maintain full range of movement. Helps relieve pain and keeps wrist flexible. Elastic loop for easy application and adjustment.

**961** Black

**ONE SIZE FITS MOST**

Fits 6-12" wrists (15-30 cm)



### COMPRESSION GLOVES

Ideal for arthritis and carpal tunnel syndrome, these gloves provide compression for weak or aching hands and wrists. The fingerless design allows for full range of movement, while the breathable fabric makes them comfortable for activities that require repetitive motion.

**Fits either hand.**

**465** Beige SM – LG One pair

**SIZING:** (Measure around palm, above thumb)

<b>SM</b>	6½ – 7½"	16 – 19 cm
<b>MD</b>	7½ – 8½"	19 – 21 cm
<b>LG</b>	8½ – 9½"	21 – 24 cm



### WRIST SUPPORT Elastic

Unique knit allows full range of movement during activity. Contour design for proper fit and comfort. Reinforced edges. **Fits either hand.**

**405** Black REG or LG

**406** Beige REG or LG

**SIZING:** (Measure around wrist joint)

<b>REG</b>	5 – 8"	12 – 20 cm
<b>LG</b>	8 – 10"	20 – 25 cm





### LUMBAR BACK BRACE w/Removable Pad

Premium back brace features double-layer design, allowing for custom fit and adjustable compression to abdomen and lower back. Removable lumbar pad cushions and compresses the lower back for concentrated support. Extra stability from flexible steel supports along spine. Breathable fabric for comfortable all-day wear.

**255** Black

**ONE SIZE FITS MOST**

Fits waist sizes 28-50" (71-127 cm)

**64179** Black

**EXTENDED SIZE**

Fits waist sizes 50-70" (127-177 cm)



### BACK SUPPORT w/Suspenders

Features four flexible stays and adjustable safety release suspenders. Large mesh band of breathable fabric provides abdominal and lower back support. Second outer elastic bands allow for firm adjustable tension. Lightweight and comfortable for all-day wear. Easy on/off.

**252** Black

**ONE SIZE FITS MOST**

Fits waist sizes 26-44" (66-111 cm)



### BACK BRACE

Adjustable, lightweight and comfortable brace with eight flexible steel springs for support of lower back area. Contoured 9" wide elastic band with outer 4" band and front fasteners for all-day easy adjustment. Can be worn under or over clothing.

**4581** Black

**ONE SIZE FITS MOST**

Fits waist sizes 28-50" (71-127 cm)



### BACK BRACE

Custom-sized, comfortable, lightweight elastic brace with supportive steel springs which conform to lower back area. Second outer band for added support. Convenient front closure for adjustable tension and comfort.

**250** White SM – XXL

SIZING: (Measure around waist)		
<b>SM</b>	28 – 32"	71 – 81 cm
<b>MD</b>	32 – 36"	81 – 91 cm
<b>LG</b>	36 – 40"	91 – 101 cm
<b>XL</b>	40 – 44"	101 – 111 cm
<b>XXL</b>	44 – 48"	111 – 121 cm



### ADJUSTABLE BACK STABILIZER

Designed to provide maximum support to strained, sprained and aching backs. Removable lumbar pad cushions and compresses the lower back for concentrated support. Four flexible stays conform to lower back and provide firm lumbar support. Sliding strap ideal for cell phones and other electronic devices.

**62557** White

**ONE SIZE FITS MOST**

Fits waist sizes 28-50" (71-127 cm)



### SHOULDER BRACE

Unique rear attachment creates a downward pull and backward pressure on the shoulder to help reduce subluxation of the A.C. joint. Elastic shoulder strap contains foam padding for localized compression. Two arm slings give total arm immobilization option. **Specify Left or Right.**

**310** Left White SM – XXL

**315** Right White SM – XXL

SIZING: (Measure around chest)		
<b>SM</b>	38 – 40"	96 – 101 cm
<b>MD</b>	40 – 42"	101 – 106 cm
<b>LG</b>	42 – 44"	106 – 111 cm
<b>XL</b>	44 – 46"	111 – 116 cm
<b>XXL</b>	46 – 48"	116 – 121 cm



### THIGH SLEEVE Neoprene Blend

Designed with contour cut to fit high on thigh for maximum coverage. Excellent for hamstring injuries and quadricep strains. Stretch nylon on both sides for easy on/off. Lock-stitch taped seams and fully trimmed edges for durability.

**444** Black SM – XL

**SIZING:** (Measure around center of thigh)

<b>SM</b>	21 – 23"	53 – 58 cm
<b>MD</b>	23 – 25"	58 – 63 cm
<b>LG</b>	25 – 27"	63 – 68 cm
<b>XL</b>	27 – 29"	68 – 73 cm

### NOSE GUARD

High impact plastic nose guard for basketball, wrestling, karate, baseball and other sports where a helmet is not required. Adjustable strap.

**140501** Nose Guard

**440501** Nose Guard  
(retail pack)

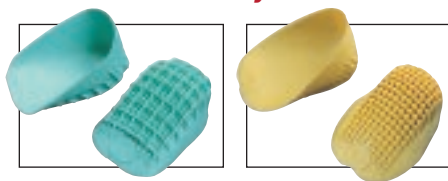


**ONE SIZE FITS MOST**

### TULI'S® HEEL CUPS

U.S. PATENTS 4,179,826 5,172,494 & FOREIGN PATENTS

**Shock absorbers for your feet!**



### PRO HEEL CUPS

For high impact sports. Double waffle pattern gives extra protection. Ideal for volleyball, soccer, field hockey, basketball and tennis.

**971** Green REG or LG

### STANDARD HEEL CUPS

Lightweight protection for the every day pain of heel strike. Relieves arch, ankle, leg and back pain. Helps prevent sore heels and knees, shin splints and heel spurs.

**970** Gold REG or LG

**HEEL CUPS SIZING:** (By body weight)

<b>REG</b>	under 175 lbs
<b>LG</b>	over 175 lbs

TULI'S® is a registered trademark of International Comfort Products, Ltd.



### THIGH SUPPORT

Easily adjustable support provides warmth and compression to the quadriceps and hamstring muscles. Provides individual fit for a wide range of sizes. Features contour design for proper fit and fully trimmed edges for durability. Comfortable for all-day wear.

**4491** Black

**ONE SIZE FITS MOST**

Fits thighs 15-35" (38-88 cm)



### THUMB STABILIZER

Helps provide relief of thumb pain without limiting hand movement. Adjustable metal splint offers support and stability. Shock absorbing foam at the base of thumb for added comfort.

**Reversible. Fits left or right.**

**4518** Beige

**ONE SIZE FITS MOST**

Fits wrists 5½ – 10½" (13-26 cm)



### HEEL SUPPORT

U.S. PATENT 5,645,525

Provides soothing compression to the heel. Gel pads stabilize the ankle and help limit lateral and medial movement.

**977** Beige SM/MD or LG/XL

**SIZING:** (According to shoe size – USA)

	Men's	Women's
<b>SM/MD</b>	6 – 9½	7½ – 11
<b>LG/XL</b>	10 – 12	11½ – 13½



### CALF/SHIN SPLINT SUPPORT

Lightweight support provides firm, comfortable compression to help relieve pain and discomfort associated with shin splints. Features wraparound design for easy on/off, and adjustable straps for a custom fit. Fully trimmed edges with smooth seams help prevent irritation and chafing.

**330** REG or LG

**SIZING:** (Measure circumference around mid-calf)

<b>REG</b>	11 – 16"	27 – 40 cm
<b>LG</b>	16 – 20"	40 – 50 cm

### CHO PAT® SHIN SPLINT COMPRESSION SLEEVE

Sleeve provides gentle compression and firmly supports the lower leg muscles and soft tissue. Two foam core straps act as shock absorbers and help maintain proper position. Easily adjustable. Can be worn under athletic socks.

**983** White MD or LG



**SIZING:** (Measure circumference around mid-calf)

<b>MD</b>	11 – 16"	27 – 40 cm
<b>LG</b>	16 – 20"	40 – 50 cm

### CHO PAT® ACHILLES TENDON STRAP

U.S. PATENT D343,002

Unique, patented strap provides relief from pain and discomfort of Achilles tendonitis.

Helps user return to daily activity. Ideal for athletes involved in running and jumping sports: basketball, volleyball, soccer, jogging and walking. Easy to apply and adjust.

**980** Beige MD or LG



**SIZING:** (Measure around widest part of ankle)

<b>MD</b>	10½ – 11½"	26 – 29 cm
<b>LG</b>	11½ – 12½"	29 – 31 cm

CHO PAT® is a registered trademark of CHO PAT® Incorporated, Hainesport, NJ



## Designed by a Dentist

### MOUTHGUARDS

- Fast-fitting co-polymer resin
- Thickened posterior area helps **absorb impact and oral trauma** via an aerated shock absorbing "pillow"
- Impact pad **reduces the risk of concussion**
- Perfect fit gives better **blunt-blow protection**
- Low profile **helps reduce gagging**
- Thin front wall construction **does not interfere with speech or breathing**
- Co-polymer construction lends to **comfort and durability**

LATEX FREE

NEW COLOR!

Strapguard™ Muellerguard™

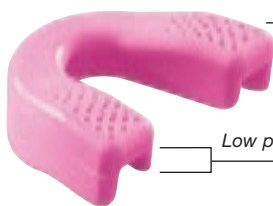
	WITH Strap	WITHOUT Strap
Clear	131007	131005
White	131032	131042
Gold	131013	131029
Orange	131035	131045
Red	131015	131025
PINK	131037	131047
Maroon	131033	131043
Kelly Green	131016	131024
Forest Green	131036	131046
Royal Blue	131017	131027
Navy Blue	131031	131041
Purple	131034	131044
Black	131018	131028



### SHOCKGUARD™

Custom fit in 30 seconds, ShockGuard™ provides maximum protection for all sports. **Includes \$9,600 dental warranty, free storage case and name label.**

431041 Black



Shock absorbing pillow

Low profile helps reduce gagging

13 TEAM COLORS!



### YOUTH MOUTHGUARDS

131020 Black with strap (100/cs)  
131030 Black without strap (100/cs)



### LIP & MOUTHGUARD

Allows full breathing and wearing comfort.

431019 Black (12/cs)

### Athletic SUPPORTER

Maintains shape after repeated washings. Features 3" waistband of heat-resistant elastic and preshrunk mesh pouch.

100 White YTH-REG, YTH-LG, SM - XL  
105 Black YTH-REG, YTH-LG, SM - XL



### Athletic SUPPORTER W/ARCHED CUP

Cup and supporter for high-impact sports. Comfortable contoured cup design with extended length protection. Durable co-polymer cup with soft rubber gasket. 3" knit waistband.

111 White YTH-REG, YTH-LG, SM - XL



### Athletic SUPPORTER W/CONVENTIONAL CUP

Molded plastic cup inserts easily into shrink resistant pouch. With rubber edges for comfort and protection.

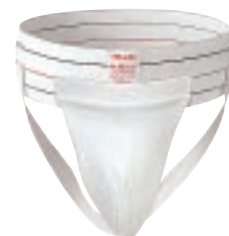
110 White YTH-REG, YTH-LG, SM - XL



### Athletic CUP SUPPORTER

3" knit waistband with 3/4" leg straps. **Pouch accommodates all Mueller cups.**

112 White YTH-REG, YTH-LG, SM - XL



Sizing chart for supporters on next page

# Mueller Collar THE COOL ONE™

U.S. PATENT 5,483,698



■ Does not trap heat like conventional collars

■ Does not float around — bolted to the shoulder pad

■ Closer to the helmet than conventional collars

■ No sizes, one size fits most (fits large youth through adults)

■ For linemen, linebackers, and power running backs

**WARNING:** It is essential to follow installation and use instructions. No warranty is made, either expressed or implied, that any injury will be prevented with this equipment.



MUELLER COLLAR		COVER ONLY	COLORS
Retail Pack	Team Pack	Retail Pack	
420301	320301	320311	Black
420302	320302	320312	Navy Blue
420303	320303	320313	Royal Blue
420304	320304	320314	Red
420305	320305	320315	Maroon
420306	320306	320316	Green
420307	320307	320317	Purple
420308	320308	320318	Gold
—	—	320319	Orange



MUELLER COLLAR / SUPPORT BRIEFS

## SUPPORTER SIZING: (Measure around waist)

<b>YTH-REG</b>	20 – 24"	50 – 60 cm
<b>YTH-LG</b>	24 – 28"	60 – 71 cm
<b>SM</b>	26 – 32"	66 – 81 cm
<b>MD</b>	32 – 38"	81 – 96 cm
<b>LG</b>	38 – 44"	96 – 111 cm
<b>XL</b>	44 – 50"	111 – 127 cm



## BRIEF SIZING: (Measure around waist)

<b>YTH-REG</b>	20 – 24"	50 – 60 cm
<b>YTH-LG</b>	24 – 28"	60 – 71 cm
<b>SM</b>	28 – 32"	71 – 81 cm
<b>MD</b>	32 – 36"	81 – 91 cm
<b>LG</b>	36 – 40"	91 – 101 cm
<b>XL</b>	40 – 44"	101 – 111 cm

## SUPPORT BRIEF

Comfortable support brief is made of breathable mesh fabric. Offers the comfort of underwear without sacrificing support. Will not accommodate protective cup.

**915** White

## SUPPORT BRIEF WITH CONVENTIONAL CUP

Combination of the traditional jockstrap and a brief with full coverage in back. Offers the comfort of underwear without sacrificing support. Includes molded plastic cup for advanced protection against impact. Rubber cup edges give a comfortable fit.

**925** White



## CONVENTIONAL CUP

Our strongest protective cup. Classic design with anatomically correct lines and supersoft elastomer, with molded cushion edge for comfort and wear.

**115Y** Male Youth

**115A** Male Adult



## ARCHED CUP

Comfortable contoured cup with extended length protection for high-impact sports. Durable co-polymer cup with soft rubber gasket.

**116Y** Male Youth

**116A** Male Adult







### PRO STRIPS™

Adhesive mesh, pressure-sensitive strips adhere to skin for protection wherever abrasion control is needed: turf burns, scrapes, blisters and calluses. Available in pre-cut strips for forehead and elbow or rolls of 2", 4" and 6" widths.

<b>010952</b>	Forehead	2" x 5" pre-cut strips (24)
<b>010954</b>	Elbow	4" x 8" pre-cut strips (24)
<b>410954</b>	Elbow	4" x 8" pre-cut strips (12 in retail clam)
<b>010962</b>	Team Package	2" x 10 yd roll
<b>010964</b>	Team Package	4" x 10 yd roll
<b>010966</b>	Team Package	6" x 10 yd roll



### BLISTER KIT

Convenient, take-along kit contains all the essentials to care for blisters, calluses, abrasions and pressure/friction burns. Kit includes form cut, latex-free pressure pads, easy-to-apply adhesive mesh and More Skin™ pads to help promote healing, relieve pain and soothe hot spots.

<b>200724</b>	11 ea	foam pressure pads	(3" x 5" sheet of ovals)
	6 ea	adhesive mesh	(1½" x 3")
	1 ea	adhesive mesh	(3" x 5")
	6 ea	More Skin™ Pads	(1" x 1")



### MORE SKIN™

Protects and helps prevent blisters; soothes abrasions, cuts, and scratches; helps ease minor burns, including sunburn. Hydrogel wound dressing provides moisture for healing, absorbs wound secretions, and helps protect against contamination. Sheet can be cut to desired shape and size. More Skin™ won't stick to injured area. Non-medicated and non-sterile.

<b>131401</b>	1" squares	75/jar	(6 jars/cs)
<b>131402</b>	3" circles	25/jar	(6 jars/cs)
<b>131404</b>	12" x 12" sheet		1 ea

### ADHESIVE MESH

Adhesive backed synthetic fiber can be cut to desired shape and size and fitted over any moveable surface. Helps protect hands and feet from blisters and calluses. Adhesive is sweat resistant and will not wash off.

<b>010901</b>	6" x 10" sheets	(15/pack)
---------------	-----------------	-----------



### STICK-ON PADDING KIT

Adhesive-backed, closed cell polyethylene foam with superior sticking power and good pressure absorption helps protect blisters, corns, calluses and friction prone areas.

<b>191001</b>	16 ea	(3" x 5" sheets)
	6 ea	(3" x 5" sheets of donuts)
	6 ea	(3" x 5" sheets of ovals)



### BLISTER PADS

Handy take-along packs contain 5 or 25 form cut pads of blister foam to help protect from friction and pressure, the most common causes of blisters and skin irritations. The thin, flexible, pressure-sensitive adhesive foam pads easily conform to desired area.

<b>200723</b>	1¾" x 2¾" foam pads	(5/pack)	(retail pack)
<b>20257</b>	1¾" x 2¾" foam pads	(bag of 25)	(team pack)



### PETROLEUM JELLY

A lubricant used by athletes on friction-prone areas.

- 160201** 1 lb jar (12/cs)
- 160202** 5 lb jar (6/cs)
- 160203** 25 lb drum (1 ea)



### LUBRICATING OINTMENT

Non-friction ointment for athletes. Apply to skin to reduce friction from athletic equipment, pads, shoes, etc. Contains soothing lanolin.

- 120201N** 3 oz tube (12/cs)
- 120202N** 1 lb jar (12/cs)
- 120203N** 5 lb jar (6/cs)
- 120204N** 25 lb drum (1 ea)



### FELT

Quality felt ideal for extra cushion or added protection.

- 060101**  $\frac{3}{8}$ " x 9" x 36" piece (1/box)  
(6 boxes/cs)



### FELT

#### Adhesive Backed

- 060151**  $\frac{1}{8}$ " x 6" x 2½ yd roll
- 060152**  $\frac{1}{4}$ " x 6" x 2½ yd roll
- 060161** Variety Pack —  
4 ea ( $\frac{1}{8}$ " x 6" x 12" sheets)  
4 ea ( $\frac{1}{4}$ " x 6" x 12" sheets)



### LUBE-STICK™ FOR RUNNERS

Provides a barrier between the skin and equipment, pads, shoes, etc. Apply to skin prior to activity. Helps keep skin smooth. Ideal for ball of foot, heel or groin area.

- 120205N** 2.25 oz stick (12/cs)
- 420206N** .60 oz stick (12/cs)  
(retail pack)



### ABRASION OINTMENT

Temporarily relieves pain and protects minor scrapes, cuts and abrasions.

- 010201N** 2.75 oz tube (12/cs)



### HEEL & LACE PADS

#### Pre-cut

Thin layers of white foam used with lubricating ointment to help protect tender foot areas by reducing friction inside shoes.

- 080201**  $\frac{3}{16}$ " x 3" x 4" pads (1000/cs)



### FOAM RUBBER

#### Open Cell

- 060201** Variety Pack —  
2 ea ( $\frac{1}{4}$ " x 6" x 12" sheets)  
2 ea ( $\frac{1}{2}$ " x 6" x 12" sheets)  
1 ea (1" x 6" x 12" sheet)  
(6 boxes/cs)



### FOAM RUBBER

#### Open Cell Adhesive Backed

- 060251**  $\frac{1}{8}$ " x 6" x 2 yd roll
- 060252**  $\frac{1}{4}$ " x 6" x 2 yd roll
- 060271** Variety Pack —  
4 ea ( $\frac{1}{8}$ " x 6" x 12" sheets)  
4 ea ( $\frac{1}{4}$ " x 6" x 12" sheets)



### DERMAL PADS

Protective pads absorb impact energy, help protect shoulders and hands from bruises. Washable, long-lasting closed cell elastomer that feels like soft skin tissue. 4" square.

- 040401**  $\frac{1}{8}$ " x 4" x 4" (12/cs)
- 040402**  $\frac{1}{2}$ " x 4" x 4" (6/cs)



### HEEL & LACE PAD DISPENSER

Two convenient snap-off rolls.

- 080202**  $\frac{1}{16}$ " x 3" x 3" pads (2000/box)





# WHIZZER®

## CLEANER & DISINFECTANT

# KILLS HIV-1 & MRSA

on hard nonporous surfaces

**It's powerful.** Kills HIV-1 (AIDS virus), Hepatitis B & C, and other viruses. Kills strep, staph (including MRSA), and fungus germs on contact. Cleans and disinfects all athletic equipment. Prevents spread of boils and athlete's foot. Whizzer® is a cleaner, fungicide, mildewstat, virucide and deodorizer — all in one. **EPA Registered.**

**It's economical.** One ounce of concentrate mixed with water makes a gallon of full-strength disinfectant. 128 cleanings per gallon.

**It's fast.** Apply directly to mats, floors, walls, training tables, locker rooms or personal items. Just wipe dry.

STRENGTH & CONDITIONING FACILITIES • TRAINING ROOM SURFACES • ATHLETIC EQUIPMENT • WRESTLING MATS • SHOWER AREAS

#### KILLS BACTERIA

Pseudomonas aeruginosa (Pseudomonas)  
**Staphylococcus aureus (Staph)**  
 Salmonella choleraesuis (Salmonella)  
 Acinetobacter baumannii (Acinetobacter)  
 Brevibacterium ammoniagenes (Brevibacterium)  
 Campylobacter jejuni (Campylobacter)  
 Enterobacter aerogenes

Enterococcus faecalis (Enterococcus)  
 Enterococcus faecalis – Vancomycin Resistant (VRE)  
 Escherichia coli (E. coli)  
 ESBL Escherichia coli – (Extended spectrum beta-lactamase producing E. coli)  
 Klebsiella pneumoniae (Klebsiella)  
 Pseudomonas cepacia (Pseudomonas)  
 Salmonella schottmuelleri (Salmonella)  
 Salmonella typhi (Salmonella)  
 Serratia marcescens  
 Shigella dysenteriae (Shigella)

**Staphylococcus aureus Methicillin Resistant (MRSA)**  
**Staphylococcus aureus Multi-Drug Resistant**  
**Staphylococcus aureus – Vancomycin Intermediate Resistant (VISA)**  
 Streptococcus pyogenes (Strep)  
 Vibrio cholerae

#### KILLS VIRUSES

Adenovirus Type 5 at 1:32 dilution (4 oz. per gallon of water)  
 Hepatitis B Virus (HBV)  
 Hepatitis C Virus (HCV)

Herpes Simplex Virus Type 1  
 Herpes Simplex Virus Type 2  
 HIV-1 (AIDS Virus)  
 Influenza Type A / Brazil (Influenza)  
 Respiratory Syncytial Virus (RSV)  
 Vaccinia (Pox Virus)

#### KILLS FUNGI

Trichophyton mentagrophytes (Athlete's Foot Fungus)  
 Aspergillus niger



TRAINING ROOM SURFACES • ATHLETIC EQUIPMENT • WRESTLING MATS • SHOWER AREAS • STRENGTH & CONDITIONING FACILITIES

## ULTRA-concentrated!

One gallon of Whizzer® concentrate makes **128 gallons** of cleaner/disinfectant

**BONUS** **2 FREE SPRAYERS**  
 with each gallon!

**WHIZZER® CLEANER & DISINFECTANT**

**230201** 1 gallon/case (w/2 free sprayers)



**MEDI-STAT™**

Spray on bandage for athletes and active people to help stop superficial bleeding. Forms a protective cover and helps protect wounds from further contamination. Excellent as a bandage for abrasions from artificial turf, minor cuts or floor burns.

**131501N** 3 oz aerosol spray (12/cs)



**Sterile  
Adhesive  
Band Strips**

Individually wrapped.



**130401** 1" x 3" (box of 100)

**130403** 2" x 4" (box of 50)

**GAUZE PADS**

**Sterile**

Individually wrapped, 12-ply sterile pads for general first aid use.

**070101** 2" x 2" (box of 100)

**070102** 3" x 3" (box of 100)

**070103** 4" x 4" (box of 100)

**FINGERTIP BANDAGES**

**Form Cut Adhesive Band Strips**

**060651** box of 100 (12/cs)

**FIRST AID BANDAGE**

Conforming elastic gauze bandage sticks to itself and does not slip. Soft and absorbent. Ideal for holding Dermal Pads or More Skin™ in place.

**060801** 3" x 4½ yd roll (24/cs)

(Sold by case only)

(while quantities last)

**ALCOHOL RUB**

70% isopropyl alcohol for a cooling, refreshing rubdown.

**010301** 1 pint (12/cs)

(while quantities last)

**010302** 1 quart (12/cs)

**VITAMIN C**

**Lemon Flavored**

Tart, chewable 100mg tablets that stimulate saliva flow, keeping mouth moist while providing Vitamin C.

**220201** 300 count (12/cs)

**220202** 1000 count (6/cs)

**GERMA™ SPRAY**

Antiseptic spray to help prevent infection in minor cuts, scrapes and burns. Easy to use in handy take-along, non-aerosol spray.

**070211** 2 oz pump spray (12/cs)

**SUDS™ FOAM SOAP**

Convenient waterless foam soap used for cleaning hands and minor wounds.

**190504N** 4 oz aerosol spray (12/cs)

**FOOT POWDER**

Absorbs moisture, reduces friction and helps keep feet dry.

**060301N** 4 oz shaker (24/cs)

**060302N** 10 lb drum (1 ea)

**060303N** 25 lb drum (1 ea)

**FOOT POWDER SPRAY**

Convenient foot spray reduces friction and helps absorb perspiration.

**060601N** 4 oz aerosol spray (12/cs)

**SHOWER SOAP**

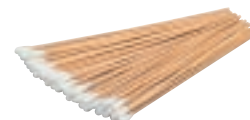
Hard-milled body and face bar lasts long, lathers up and rinses clean. Contains vegetable oils and glycerin to condition skin.

**190502N** 2.75 oz bars (72 bars/cs)

**COTTON APPLICATORS**

Strong, smooth 6" sticks tipped with non-sterile cotton.

**030401** 1000/pkg (10 pkg/cs)

**TONGUE DEPRESSORS**

6" white birch tongue depressors. Useful for application of ointments.

**200601** 72/pkg (12 pkg/cs)

**200602** 500/pkg (10 pkg/cs)

(while quantities last)

**GLOVE OIL LIQUID**

Handy applicator bottle makes it easy to work oil into leather, keeping baseball gloves supple and protected from moisture.

**370351** 2 oz applicator bottle (12/cs)  
(retail pack)

**BALL CLEANER**

Liquid cleaner for basketballs and footballs. Contains a small amount of wax so balls may be buff-shined with a dry towel.

**020201** quart (12/cs)

**020202** gallon (1 ea)







### B SHARP™ Traction Action

Replaces messy rosin powder **for cleaning the soles of basketball shoes**, thereby creating excellent traction. Use at time-outs and half-time. Wipe shoes on towel coated with B Sharp™, which removes dust, dirt and grime. Dirt and B Sharp™ wash out of towel in regular laundry. **One quart equals an 8-game supply.**

**020101** quart (12/cs)



### GYMNASTIC & WEIGHTLIFTING CHALK

Powdered and solid block forms of magnesium carbonate. Used on the hands of gymnasts and weightlifters to reduce friction from contact with equipment.

**070501** 1 lb (8 - 2 oz bars) (12 lbs/cs)

**070502** 2 oz shaker (24/cs)



### ROSIN POWDER

Grip-improving powdered rosin. Apply to athletes' hands or soles of basketball shoes for improved traction. Dust on handles of baseball and softball bats for improved grip.

**180201** 4 oz shaker (24/cs)

**180202** 10 lb drum (1 ea)



### BATTER'S BAGS

Crushed rock rosin in porous cloth bags. For dusting bat handles to improve grip.

**020401** 12 oz bag (12/cs)



### ROSIN BAGS Pitcher's

Powdered rosin in handy pocket-sized bags.

**180101** 2 oz bags (12/box)



### PINE TAR

Use a rag to apply this sticky black liquid to handles of aluminum and wood baseball and softball bats. Improves grip and feel.

**160601** 4 oz bottle w/rag (12/cs)  
(retail pack)

**160602** 16 oz bottle (12/cs)



### MAGIC GRIP™

U.S. PATENT 5,204,088

Grip enhancer repels water and sweat by keeping hands and gloves dry. Legal for use in NCAA and high school play, used by the pros.

- Not sticky or tacky
- Washes off with soap and water
- Spray on hands or gloves
- Magic Grip™ improves grip by 75%. Ideal for all sports.

**130201** 3 oz aerosol spray (12/cs)



### STICKUM™ SPRAY

Aerosol adhesive spray for hands to help improve grip even in wet conditions when most brands lose tackiness. Ideal for all sports. Excellent for bat handles and vaulting poles.

**190701** 4 oz aerosol spray (12/cs)



### STICKUM™ PASTE

Contains resin in a wax base to improve ball handling and help improve grip. Comes in paste form to stay on athletes' fingers longer.

**190801** 4 oz jar (12/cs)



### STICKUM GRIP™ POWDER

Contains rosin in convenient powder form for fast, no-mess application. Gives an improved grip. Warmth of hand helps activate tackiness.

**490751** 1.25 oz shaker (12/cs)  
(retail pack)



### ORAL WEDGE

Cone-shaped screw for prying open jaws of injured athletes.

**150101** 12/cs



### MASSAGE LOTION

Softens and soothes as it disappears into the skin. Greaseless, emollient formula provides lubricating action to make massage easier and more effective.

**130802** 4 oz bottle (12/cs)

**130801** 16 oz bottle (12/cs)

**130803** gallon w/pump (1 ea)





## SPORT BOTTLES

Heavyweight, long-lasting sport drink bottles. Special plastic formula allows even pressure to dispense all liquid in bottle. Wide mouth opening to easily add ice. Available in quarts and pints with push-pull or straw lids. Colors red, white and natural.

See price list for complete listing of Mueller bottles.

**Customized PRIVATE LABEL BOTTLES Available!**

Call 800-356-9522 for details.



Also available:

## SPORT BOTTLES TEAMPAK™

Economical, unassembled  
100 wide mouth quart bottles/case,  
12 cases/pallet. Push-pull or straw lids.



## WATER BOY

### Battery Operated

Portable drinking fountain features long-lasting rechargeable battery, compact stainless steel frame, and four "easy flow" dispenser valves with durable braided nylon hoses. Sanitary, no-mess operation. Comes complete with 10-gallon cooler and heavy-duty battery. Battery charger not included.

**230510** 10-gallon unit w/heavy-duty battery (1 ea)

**230515** Battery charger (dual rate) (1 ea)

**230520** Heavy-duty battery (1 ea)



## BOTTLE CARRIER

### Wire

Heavy-duty steel holder holds 6 quart-sized bottles. Special plastic coating prevents rust, protects furniture and equipment from scratches. With convenient fold-down handle. Sold empty.

**020503** 1 each (empty)



## BOTTLE CARRIER

### Cardboard

Lightweight and sturdy, coated cardboard carrier holds 6 quart-sized sport bottles.

**020573** includes 6 natural push-pull

**020583** includes 6 natural w/straw

**020553** empty carrier



## CUP CARRIER

### Wire

The most sanitary way to dispense drinks. Heavy-duty wire construction for durability and strength. Holds 20 6 oz. cups. Sold empty.

**030501** 1 each (empty) (while quantities last)



## COOLERS

Sturdy, well-insulated coolers with spigots.

**020525** 10 gallon (1 ea) (while quantities last)

**020526** 5 gallon (1 ea) (while quantities last)





### EMERGENCY SPILL KIT

Ready-to-use kit contains components for biohazard cleanup.

**200733** Emergency Spill Kit (12/cs)

#### CONTENTS

- 1 - Bio-Wipe Bag™/Mitt 1 - Heavy Duty Towellette
- 1 - 2 oz Cavicide Disinfectant Spray 1 - Instruction Sheet
- 2 - Nitrile Gloves (Contents may vary)



### STAPHASEPTIC®

First aid bactericide gel prevents skin infections caused by antibiotic resistant staph (MRSA) and other germs. Effective way to protect yourself and stop staph from spreading. Greaseless, non-staining gel provides soothing wound care without stinging or irritation.

**190312** 144 count dispenser (1/16 oz. packets)

**190306** 2 oz. tube

*StaphAseptic® is a registered trademark of Tec Labs, Albany, OR*



### LATEX GLOVES

**Ambidextrous — with powder**

**070302** MD (box of 100)

**070303** LG (box of 100)

### GLOVE DISPENSER

Clips to belt for easy access. Includes 6 (LG) gloves.

**070351** Black (1 ea)



Nasal Sponge *dry*

Nasal Sponge *wet*



### BLOOD SPILL TAPE™

**Acts in 2 ways to help control bleeding.**

**Direct Compression:** Cohesive tape easily conforms to wound area. **Absorption:** 99% cotton for fast absorption and easy-tearing application.

**130612** 2" x 5 yds (24 rolls/cs)

**130613** 3" x 5 yds (16 rolls/cs)



### SANI-CLOTH® PLUS

#### Germicidal Wipes

Pre-moistened cloths contain powerful disinfectant to kill germs on hard surfaces and equipment. Convenient to use, economical and disposable. Tuberculocidal, bactericidal, and virucidal, including HIV.

#### EPA registered

**190102** 160 cloths/canister (12 canisters/cs)

*Sani-Cloth® Plus is a registered trademark of PDI, Orangeburg, NY*

### CAVICIDE®

#### Surface Disinfectant

Potent, multi-purpose disinfectant/decontaminant cleaner for use on inanimate surfaces. Ready-to-use CaviCide® effectively kills HIV and other viruses, fungi and bacteria when used as directed. CaviCide® is bactericidal, virucidal, fungicidal and tuberculocidal.

#### EPA registered

**260101** 24 oz sprayer (12/cs)

*Cavicide® is a registered trademark of Metrex Corporation, Romulus, MI*



### NASAL PLUGS

#### Cotton

Soft, non-linting 100% virgin cotton plugs used to control common nosebleeds occurring in the first inch of the nose. 1½" long.

**191221** 1 package of 300



### NASAL SPONGES

#### Fiber-free

Nasal sponges hydrate and expand to absorb blood and apply pressure to help stop bleeding. Fiber-free sponge material helps eliminate risk of contamination. Each sponge is individually wrapped.

**191202** 1 package of 5

**191201** 1 package of 25

Mouthwatering Explosion!  
**QUENCH GUM**  
 www.quenchgum.com

**NEW FLAVORS!**



**10-STICK PACK 24-COUNT TRAY**

**170145-T** Double Flavor Orange/Fruit

**170155-T** Double Flavor Strawberry/Watermelon

**170159-T** Double Raspberry



**10-STICK PACK SHELF TALKER**

**170144** Double Flavor Orange/Fruit

**170146** Double Flavor Strawberry/Watermelon

**170147** Double Raspberry

(sold as complete unit only)

**America's  
 #1 Sports Gum!**

*Kids love it,  
 athletes demand it.*

**10-STICK PACK  
 WATER BOTTLE SIDEKICK  
 COUNTERTOP DISPLAY**

Orange/Fruit,  
 Strawberry/Watermelon  
 and Double Raspberry flavors

**170156** 114 - assorted  
 10-stick packs



**10-STICK PACK 12-COUNT TRAY**

**170143-T** Double Flavor Orange/Fruit

**170153-T** Double Flavor Strawberry/Watermelon

**170157-T** Double Raspberry







*Stimulates salivary glands  
to eliminate dry mouth fast!*



#### 48-COUNT SIDEKICK DISPLAY

48 Variety 6-packs. Lemon, Orange & Fruit mixed

**170197** 48 - 6-packs/display  
(sold as complete unit only)



#### TUB O' QUENCH®

Lemon, Orange & Fruit mixed

**170176** approx. 300 pieces  
(4 tubs/cs)



#### VARIETY 6-PACK TRAY

Conveniently packaged for hanging or shelf display. Lemon, Orange & Fruit mixed

**170777-T** 12 - 6-packs/tray  
(sold by tray only)

#### RESEALABLE VARIETY BAG

Lemon, Orange & Fruit flavors

**170199** 24 - 2.4 oz bags/cs  
(sold by case only)



#### 48-COUNT RESEALABLE BAG SIDEKICK DISPLAY

Lemon, Orange & Fruit flavors

**170189** 48 - 2.4 oz bags/cs  
(sold as complete unit only)

#### RESEALABLE VARIETY BAG w/Clip Strips

Lemon, Orange & Fruit flavors

**170190** 36 - 2.4 oz bags w/3 FREE clip strips  
(sold by case only)



#### Nutrition Facts

Serving Size 1 Stick (5.00g)

Amount Per Serving	
<b>Calories</b> 20	
	<b>% Daily Value*</b>
<b>Total Fat</b> 0g	<b>0%</b>
<b>Sodium</b> 0mg	<b>0%</b>
<b>Total Carbohydrate</b> 4g	<b>1%</b>
Sugars 3g	
<b>Protein</b> 0g	<b>0%</b>

\*Percent Daily Values are based on a diet of other people's secrets.

#### QUENCH® GUM **STICK** PACK PIECE PURE POTASSIUM CONTENT

Potassium Triphosphate	2.74 mg
Potassium Chloride	2.41 mg
Acesulfame Potassium	0.45 mg

**TOTAL POTASSIUM** per 5.00 gram stick **5.60 mg**

Sugar, Dextrose, Glucose Syrup, Gum Base, Citric Acid, Glycerine, Natural & Artificial Flavors, Soy Lecithin, Potassium Triphosphate, Potassium Chloride, Aspartame, Acesulfame Potassium, Artificial Colors: **Orange/Fruit Punch** (FD&C Red 40 Lake, Yellow 6) **Double Raspberry** (FD&C Red 40 Lake, Blue 1) **Strawberry/Watermelon** (FD&C Red 40 Lake, Blue 1, Yellow 5) BHT. **PHENYLKETONURICS: CONTAINS PHENYLALANINE.** Milk may be present.

Not a significant source of calories from fat, saturated fat, trans fat, cholesterol, dietary, fiber, Vitamin A, Vitamin C, calcium, and iron.

#### QUENCH® GUM **CHUNK** PIECE PURE POTASSIUM CONTENT

Potassium Triphosphate	2.47mg
Potassium Chloride	2.41 mg
Acesulfame Potassium	0.45 mg

**TOTAL POTASSIUM** per 4.50 gram chunk **5.04 mg**

Sugar, Dextrose, Glucose Syrup, Gum Base, Citric Acid, Glycerine, Artificial & Natural Flavors, Soy Lecithin, Potassium Triphosphate, Potassium Chloride, Aspartame, Acesulfame Potassium, Artificial Colors: **Lemon** (FD&C Yellow 5 Lake) **Orange** (FD&C Yellow 6) **Fruit** (FD&C Red 40 Lake), BHT. **PHENYLKETONURICS: CONTAINS PHENYLALANINE.** Milk may be present.

#### Nutrition Facts

Serving Size 1 Chunk (4.50g)

Amount Per Serving	
<b>Calories</b> 15	
	<b>% Daily Value*</b>
<b>Total Fat</b> 0g	<b>0%</b>
<b>Sodium</b> 0mg	<b>0%</b>
<b>Total Carbohydrate</b> 4g	<b>1%</b>
Sugars 3g	
<b>Protein</b> 0g	<b>0%</b>

\*Percent Daily Values are based on a diet of other people's secrets.



**VARIETY VALU-PACK  
SHELF TALKER**

Lemon, Orange & Fruit mixed

**170193** 12 - 6 oz variety bags  
(sold as complete unit only)



**42-COUNT  
GRAVITY FEED DISPLAY**

Lemon, Orange & Fruit mixed

**170198** 42 - 25-count variety boxes  
(sold as complete unit only)



**VARIETY BOX  
SHELF TALKER**

Lemon, Orange & Fruit mixed

**170192** 12 - 25-count variety boxes  
(sold as complete unit only)



**32-COUNT FLOOR DISPLAY**

Lemon, Orange & Fruit mixed

**170196** 32 - 25-count boxes  
(sold as complete unit only)



**QUENCH® GALLON MIST**

Economical — approximately 4000 “quenching sprays” per gallon. Salivary stimulant with natural lemon oils and citric acid eliminates cotton mouth fast. Excellent relief for non-gum chewers, diabetics and people on a fluid restricted diet. Zero calories, zero sodium, zero potassium. Dilute with water to use as a gargle or handy refill.

**170101** Lemon (1 gallon/cs)

**2 FREE sprayers per gallon**



**QUENCH® MIST  
SHELF TALKER**

Sprayers with citric acid to “quench your thirst”. Excellent relief for non-gum chewers and people on medication. Zero calories, sodium or potassium. Lemon, Orange, Cherry & Grape.

**470141** 24 - 0.32 oz  
sprayers/display  
Assorted Lemon, Orange,

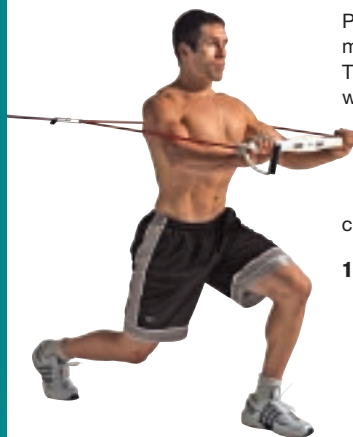
QUENCH® is a registered trademark of Quench Co., LLC of Seattle, WA



## DELUXE GYM

Portable gym that can be used almost anywhere. Ideal for men and women to shape, tone, and condition in ¼ the time. The gym includes a 30" take-apart lifting bar, fitness cable with rotator handles, a door attachment for expanded range of exercises, and a jogging (treadmill) belt. Also included are an instructional poster and a **FREE** 60-day transformation program by fitness expert Jon Hinds. All fit in the convenient carrying case.

**100652** Deluxe Gym (6/cs)



## SHAPE AEROBICS CORDS

Perfect for men and women. Features high quality, impact-resistant tubing with adjustable length. Rotator handles with foam grips for comfort. Includes illustrated instructions. Compact and portable.

### 3 Levels of Resistance

<b>100351</b>	R-1 Teal	Light
<b>100352</b>	R-2 Purple	Medium
<b>100353</b>	R-3 Pink	Heavy



## POWER JUMP ROPE

9½' fully adjustable rope. Ideal for men and women. Ball bearing-like feature prevents twisting of rope. High quality, impact-resistant. Includes fully illustrated instructions.

**100312** Power Jump Rope Assorted Colors



## SPEED JUMP ROPE

9½' fully adjustable rope ideal for all fitness levels and ages. USA made, top quality, impact-resistant. Includes illustrated instructions and exercise program.

**100375** Speed Jump Rope Assorted Colors



## SHAPE AEROBIC RING

Complete aerobic, rehab and muscle toning program. Portable ring adds variety and intensity to existing workouts. High quality, durable foam grips are ultraviolet-resistant. Includes instructions.

**100383** Silver Light Resistance

**100384** Teal Medium Resistance



## EXER-BANDS™

Continuous exercise loops for upper and lower body workouts, rehab, and therapy. Odorless, compact, and easy to use.

### 2 Progressive Resistance Levels in 2 Lengths

<b>400451</b>	Green	18"	Medium Resistance
<b>400456</b>	Green	30"	Medium Resistance
<b>400452</b>	Plum	18"	Heavy Resistance
<b>400457</b>	Plum	30"	Heavy Resistance



## SHAPE AEROBIC FIGURE 8

Two interlocking rings of variable resistance tubing for upper and lower body workouts. Tones and trims back, thighs, buttocks, hips, legs, arms and chest. Ultraviolet-resistant, contoured foam handles for comfort and long life. Includes instructions.

**100388** Teal Medium Resistance



**Mueller Sports Medicine Products are sold worldwide.**

www.AmberCity.com

<b>A</b>	
Abrasion Ointment.....	45
Adhesive Mesh .....	44
AIRCAST®	
Sport Ankle Brace.....	26
Tennis Elbow Support.....	37
Alcohol Rub .....	47
ANALGESICS .....	14
ANKLE BRACES	
ATF® High Performance.....	24, 25
ATF® w/Universal Fit, Pro Level™ .....	25
Adjust-to-Fit™ .....	26
Aircast® Sport .....	26
Bilateral.....	25
Gel•Brace .....	12, 26
Hg80® Adjust-to-Fit™ .....	20
Hg80® Ankle Brace w/straps .....	21
Hg80® Rigid .....	20
Lace-Up.....	27
Lite Brace™ .....	26
Soccer .....	25
Soft w/straps .....	26

Achilles Tendon Strap, Cho Pat®.....	41
Adjustable .....	27
Elastic.....	27
Neoprene.....	27
Soccer.....	27
Support w/straps.....	27
Ankle Wrap.....	8
Arm Sling, adjustable.....	37
ATHLETIC SUPPORTERS.....	42, 43

B Sharp™ Traction Action .....	48
<b>BACK BRACES &amp; SUPPORTS</b>	
Adjustable Back Stabilizer .....	40
Brace .....	40
Lumbar Brace w/ Removable Pad .....	40
Support w/ Suspenders .....	40
Ball Cleaner .....	47
<b>BANDAGES</b>	
Fingertip Bandages .....	47
First Aid Bandage .....	47
M Strips® .....	47

**C**



<b>COLD PACKS</b>		<b>Patella Stabilizers</b> .....	33	<b>Bandage Shears</b> .....	8
Cold/Hot Pack, reusable.....	13	Wraparound, Deluxe.....	32	Emergency Shears.....	8
MuellerKOLD™, instant cold pack.....	13	Wraparound, Adjustable.....	32	M Cutter™.....	8
MuellerKOLD™ Wrap.....	12	Knee Pads.....	35	M Cutter™ Blade Cartridges.....	8
Flexible Cold/Hot Therapy Pads, reusable.....	13	Knee Pads w/Kevlar®, Pro Level™.....	35	Tape Cutters.....	8
Cold/Hot Therapy Wrap.....	12	Knee Pads Shokk.....	35	Tape Cutter Replacement Blades.....	8
Cold/Hot Wrap.....	12	Knee Sleeves.....	35	Shin/Calf Sleeves.....	41
Collar, Collar Covers.....	43	Knee Stabilizer, Elastic.....	34	Shockguard™.....	42
Compression Gloves.....	39	Knee Stabilizer, Self Adjusting.....	33	Shoulder Brace.....	40
Coolant Cold Spray.....	13	Knee Strap, Cho Pat®.....	34	Shower Soap.....	47
Coolers.....	49	Knee Strap, Cho Pat® Dual Action.....	34	Sling Bag.....	9
Cotton Applicators.....	47	Knee Strap, Jumper's.....	34	<b>SPECIALTY BRACES &amp; SUPPORTS</b> .....	41
Cup Carrier, wire.....	49	Knee Supports.....		<b>SPORTS ACCESSORIES</b> .....	47-50
<b>D</b>		Adjustable, Neoprene.....	35	Spating Tape™.....	6
Dermal Pads.....	45	Elastic.....	34	Sports Balm™.....	14
DVD, Taping & Bracing Techniques.....	8	Neoprene.....	35	StaphAseptic®.....	50
<b>E</b>		Volleyball Knee Pads.....	35	Stick-on Padding Kit.....	44
<b>ELASTIC WRAPS</b> .....	14	<b>L</b>		Stickum Grip™ Paste, Powder, Spray.....	48
Elastic Bandages.....	14	Lube-Stick™ for Runners.....	45	Suds™ Foam Soap.....	47
Wonder Wrap™.....	14	Lubricating Ointment.....	8, 45	Sunglasses, No Glare™ Flip-ups.....	15
<b>ELBOW BRACES, SLEEVES &amp; SUPPORTS</b>		<b>M</b>		Support Briefs.....	43
Elbow Pads w/Kevlar®, Pro Level™.....	36	M Lastic® Tape (Blood Spill Tape™).....	6, 50	Supporters, Athletic.....	42
Elbow Pads.....	37	M Strips®.....	47	<b>T</b>	
Elbow Sleeves.....		M Tac™ non-aerosol pre-tape spray.....	8	<b>TAPE &amp; TAPING SUPPLIES</b> .....	4-8
Neoprene Blend.....	37	M Tape®.....	5	M Lastic® Tape (Blood Spill Tape™).....	6, 50
Padded.....	36	M Tape® team colors.....	6	M Tape®.....	5
Professional, neoprene.....	36	M Wrap®.....	6	Team colors.....	6
Shokk.....	36	Magic Grip™ Spray.....	48	Perform™ Tape, porous.....	5
Turf.....	36	Massage Lotion.....	48	Spating Tape™.....	6
Elbow Supports.....		Medi Stat™.....	47	Stretch M Tape Premium.....	6
Elastic.....	37	More Skin™.....	44	Tape Wrap.....	4
Golfer's.....	37	<b>MOUTHGUARDS</b> .....		Tear-Light Tape™.....	5
Neoprene Blend.....	37	w/Strap, without Strap, Colored, Youth.....	42	Tape Tote.....	8
Hg80® Tennis Elbow Brace.....	22	Mueller Collar, Collar Covers.....	43	Tape & Tuffner™ Remover.....	8
Tennis Elbow Strap, Cho Pat®.....	37	MuellerHinge™ 2100.....	32	Taping & Bracing Techniques Instructional DVD.....	8
Tennis Elbow Supports.....		MuellerKOLD™, instant cold pack.....	13	Thigh Sleeve.....	41
Aircast®.....	37	MuellerKOLD™ Wrap.....	12	Thigh Support.....	41
Neoprene Blend.....	37	Muellergesic®.....	14	Thumb Stabilizer.....	41
Emergency Spill Kit.....	50	<b>N</b>		Tongue Depressors.....	47
Exer-Band™.....	54	Nasal Plugs.....	50	<b>TRAINERS KITS</b> .....	9-11
EZ-Wrap™.....	12	Nasal Sponges.....	50	Clear Zipper Bags, Empty.....	10
<b>F</b>		No Glare™.....		Fanny Pack, Empty.....	11
Felt.....	45	Flip-up Sunglasses.....	15	First Aid Soft Kit, Complete.....	11
Felt, adhesive backed.....	45	Sticks, Strips, Premium.....	17	Medi Kit™ Carry-On, Empty.....	9
Fingertip Bandages.....	47	Nose Guard.....	44	Medi Kit™ 100.....	10
First Aid Bandage.....	47	<b>O</b>		Medi Kit™ 200.....	10
First Aid Soft Kit, Complete.....	11	Oral Wedge.....	48	Medi Kit™ 300.....	10
Foam Rubber.....	45	<b>P</b>		Medi Kit™ 500.....	10
Foam Rubber, adhesive backed.....	45	<b>PADS</b>		Medi Kit™ 1000.....	10
<b>FOOT CARE</b>		Elbow Pads.....	37	Refill Kit.....	10, 11
Foot Powder.....	47	Knee Pads.....	35	Sling Bag, Empty.....	9
Foot Powder Spray.....	47	Volleyball Knee Pads.....	35	Sport Care® Soft Kit.....	11
<b>G</b>		<b>PADDING/ABRASION CONTROL</b> .....	44, 45	Sport Care® Soft Kit Jr.....	11
Gauze Pads.....	47	Petroleum Jelly.....	45	Team First Aid Kit, Complete.....	11
Gel•Brace.....	12, 26	Pine Tar.....	48	Trekker.....	9
Germa™ Spray.....	47	Pro Strips™ Abrasion Control.....		Tuffner™ Pre-Tape Spray.....	8
Glove Oil Liquid.....	47	Pre-Cut.....	44	TULI'S® Heel Cups, Standard & Pro.....	41
Gloves, Latex.....	50	Rolls.....	44	<b>U</b>	
Glove Dispenser.....	50	Protective Cups.....	43	<b>UNDERWRAP</b>	
GRIP ENHANCERS.....	48	<b>Q</b>		M Wrap®.....	6
Gymnastic & Weightlifting Chalk.....	48	<b>QUENCH®</b>		M Wrap®, Colors.....	6
<b>H</b>		Quench® Gum.....	51-53	<b>V</b>	
Heel & Lace Pads.....	45	Quench® Gallon Mist.....	53	Vitamin C.....	47
<b>HEEL CUPS</b>		Quench® Mist Sprayers.....	53	Volleyball Knee Pads.....	35
Tuli's® Standard & Pro.....	41	Quick Drying Adherent Spray.....	8	<b>W</b>	
Heel Support.....	41	<b>R</b>		Water Boy™.....	49
Hg80® MUELLER MERCURY™.....	18-23	<b>REHAB &amp; FITNESS</b>		Whizzer® Cleaner & Disinfectant.....	46
Hg80® Ankle, Knee, Tennis Elbow & Wrist Braces		Deluxe Gym.....	54	Wonder Wrap™.....	14
Hot Stuff®.....	14	Exer-Band™.....	54	<b>WRIST BRACES, SLEEVES &amp; SUPPORTS</b>	
<b>I</b>		Power Jump Rope.....	54	Comfort Wrist Stabilizer.....	38
Ice Bag Dispenser.....	12	Shape Aerobic Cord.....	54	Compression Gloves.....	39
Ice Bags, disposable.....	12	Shape Aerobic Figure 8.....	54	Ultra-Lite® Carpal Tunnel Wrist Brace.....	38
Ice Bag, reusable.....	13	Shape Aerobic Ring.....	54	Wrist Braces	
Ice Bag, single use.....	13	Speed Jump Rope.....	54	Hg80®.....	22
<b>K</b>		<b>ROSIN</b>		w/Splint.....	38
<b>KNEE BRACES, SLEEVES &amp; SUPPORTS</b>		Bags.....	48	Wrist Sleeve.....	39
Knee Braces		Bulk, powder.....	48	Wrist Stabilizer.....	38
Elastic Knee Brace.....	33	Shaker.....	48	Wrist Support Wrap.....	39
Hg80® Hinged Knee Brace.....	19	Stickum Grip™ Powder.....	48	Wrist Supports	
Hg80® Knee Brace.....	19	<b>S</b>		Elastic.....	39
Hg80® Stabilizer.....	19	Sani-Cloth® Plus Germicidal Wipes.....	50	Neoprene.....	39
Hinged Knee Brace.....	31	<b>SCISSORS, SHEARS &amp; CUTTERS</b>		w/Loop.....	39
Hinged Deluxe, Pro Level™.....	31	Bandage Scissors.....	8		
Hinged Wraparound.....	31				
MuellerHinge™ 2100.....	32				

PUT US ON DISPLAY



HG 80® DISPLAY      FREESTANDING SPIN RACKS

COUNTERTOP SPINNERS



 **Mueller®**



# EASY TO SHOP



**SIZING** is color coded and clearly labeled in upper left corner

**PRODUCT DESCRIPTION** is dominant and unhindered by brand name

**MAIN FEATURE** easily visible in primary photo

**SUPPORT LEVEL** clearly identified, price point corresponds to support level

## COLOR-CODED SIZING

X-SMALL			LARGE
SMALL			X-LARGE
MEDIUM			XX-LARGE
			ONE SIZE



## EASY TO SHOP FEATURES

- **Product size and number** are clearly stated on top corners of package
- Packaging recognizes your **diverse customer** and unique go-to market strategy
- **Selection of products** appeals to active people of all ages
- **Care and Caution sections** are clearly stated on back of package



## THE BEST NEVER REST

#1 in store placements • #1 in sales • #1 in turns  
#1 gross profit dollars • #1 dollar return on investment  
#1 profit per square foot • #1 in service • #1 in quality