

# TownLine Wire

carts & shelving

Attack the clutter with TownLine Wire



800.medline

800.633.5463

## TownLine Wire by Medline

A selection of quality wire shelving and wire carts at the best price in the market.

Townline Wire products are designed to easily assemble and reassemble to accommodate changing needs.

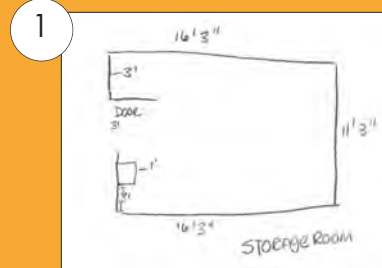
### Key features include:

- High Weight Capacities**  
 Stationary Weight Capacity (evenly distributed)  
 Shelf width up to 72" wide: 300 lbs. per shelf.  
  
 Mobile Weight Capacity  
 Our 5" polyurethane casters have a mobile weight capacity of 225 lbs each, providing a 900 lb. weight capacity per cart.
- Tool-Free Assembly**
- Warranty**  
 All products are warranted to be free from defects in material and workmanship under normal use, service and maintenance for a period of one (1) year from date of invoice.

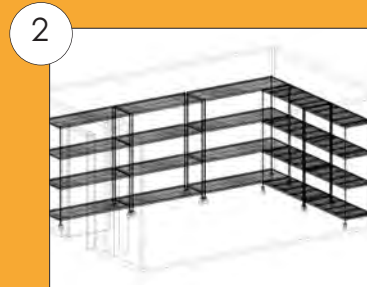
TownLine Wire products are recommended for dry and heated environments only.

## Complimentary Design Solutions

For large or small projects, designing a custom TownLine solution for your storage space is as easy as 1, 2, 3.



1 Ask your local Medline representative to sketch the dimensions of your space.



2 You will receive a custom diagram of your space from our design experts along with a detailed listing of components to complete your project.



3 Order your TownLine Wire components and set up your new storage space. TownLine is easy to assemble – no tools required!



## The Industry's Sturdiest Shelving Unit!

Our economical, sturdy chrome shelving units consist of four posts, four shelves, four post levelers and plastic shelf clips. Units can be used as standalone units or part of a full storage solution. The shelving units can easily be made mobile by adding casters (see below).

MDRM18366C	18" x 36" x 64"
MDRM18486C	18" x 48" x 64"
MDRM18606C	18" x 60" x 64"
MDRM24366C	24" x 36" x 64"
MDRM24486C	24" x 48" x 64"
MDRM24606C	24" x 60" x 64"



## Make it Mobile with TownLine Casters

Make any of our stationary units mobile by adding casters. Featuring 5" swivel, non-marking polyurethane wheels that are threaded to fit easily into the bottom of the posts. Donut bumpers are included to help protect walls.

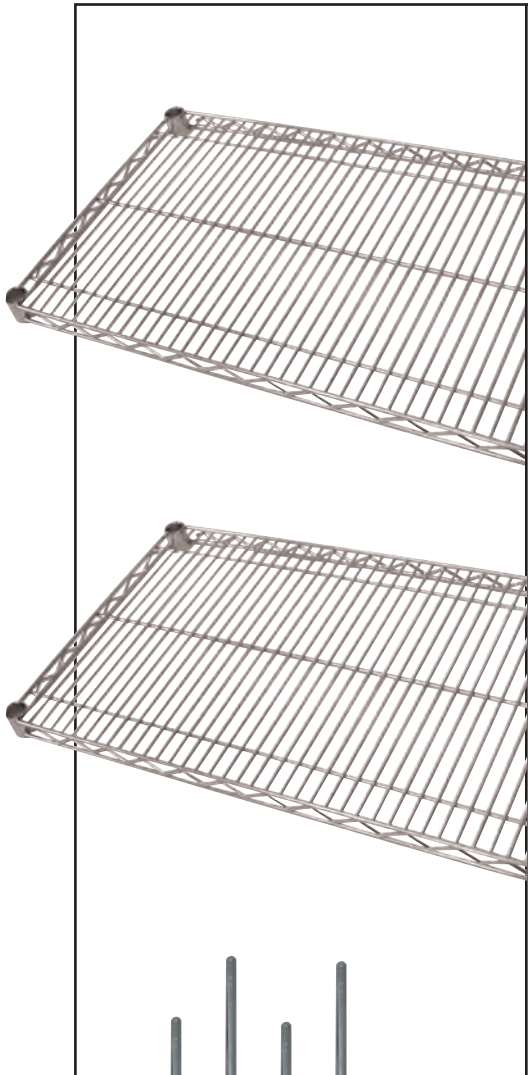
MDRMSSC	Caster, 2/pk
MDRMSSCB	Brake Caster, 2/pk



## Snap-on Shelf Covers Attach Easily To Create Solid Clean Surface

When attached to a shelf these covers create a solid clean surface. Constructed of rugged polyethylene for added strength and durability, these shelf covers feature a raised embossed design to promote air circulation.

MDR1824SC	Shelf Covers, 18" x 24"
MDR1830SC	Shelf Covers, 18" x 30"
MDR1836SC	Shelf Covers, 18" x 36"
MDR1842SC	Shelf Covers, 18" x 42"
MDR1848SC	Shelf Covers, 18" x 48"
MDR1860SC	Shelf Covers, 18" x 60"
MDR2424SC	Shelf Covers, 24" x 24"
MDR2436SC	Shelf Covers, 24" x 36"
MDR2442SC	Shelf Covers, 24" x 42"
MDR2448SC	Shelf Covers, 24" x 48"
MDR2460SC	Shelf Covers, 24" x 60"
MDR2472SC	Shelf Covers, 24" x 72"



## TownLine Wire Shelves Allow You to Customize Your Units!

Save on our most popular size shelves. Create your own custom shelving unit by ordering shelves, posts, and casters. Our chrome shelves come two to a pack and include shelf clips.

MDRM1830S	18" x 30"	2/pk
MDRM1836S	18" x 36"	2/pk
MDRM1848S	18" x 48"	2/pk
MDRM1860S	18" x 60"	2/pk
MDRM1872S	18" x 72"	2/pk
MDRM2436S	24" x 36"	2/pk
MDRM2448S	24" x 48"	2/pk
MDRM2460S	24" x 60"	2/pk
MDRM2472S	24" x 72"	2/pk

**Clear Shelf Liner** 1/8" thick, clear Mylar-plastic shelf inlay. To be placed on top shelves to help keep contents clean and dust free. If size is not available, choose next larger size and cut to fit.

MDRT1836L	18"W x 36"L	4/pk
MDRT1848L	18"W x 48"L	4/pk
MDRT1872L	18"W x 72"L	4/pk
MDRT2136L	21"W x 36"L	4/pk
MDRT2436L	24"W x 36"L	4/pk
MDRT2448L	24"W x 48"L	4/pk
MDRT2460L	24"W x 60"L	4/pk

## Make Your Shelving Units Any Height with TownLine Wire Posts

Our chrome posts are clearly marked for easy installation. The easy to adjust leveling bolts will help to compensate for uneven floors. Constructed with 1" round steel tubing for optimal strength and durability. Posts come four to a pack.

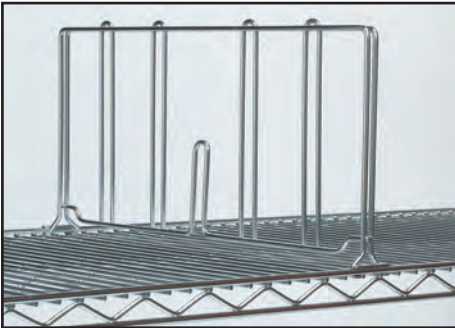
MDRM34P	34"	4/pk
MDRM54P	54"	4/pk
MDRM64P	64"	4/pk
MDRM72P	72"	4/pk
MDRM84P	84"	4/pk





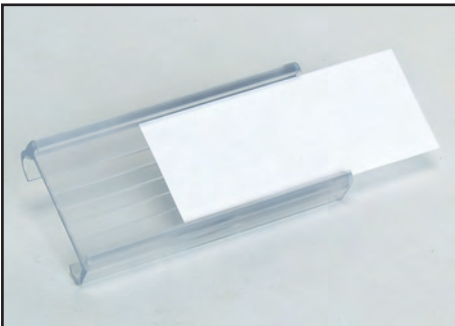
## TownLine Shelf Ledges Keep Your Valuable Inventory from Falling off the Shelf

- MDRM418L 18" x 4" Side Ledge
- MDRM424L 24" x 4" Side Ledge
- MDRM436L 36" x 4" Back Ledge
- MDRM448L 48" x 4" Back Ledge
- MDRM460L 60" x 4" Back Ledge



## Keep Your Inventory Organized with Our Shelf Divider

- MDRM718D 18" x 7" Divider
- MDRM724D 24" x 7" Divider



## Label Holders

Clear plastic label holders snap easily onto shelf edge to let you quickly identify items. Holders can be cut if other sizes are required. (Labels not included.)

- MDRCTLH3 3"W



## Townline Shelf Clips Securely Attach Shelves to Posts

Interlocking plastic shelf clips are used to attach shelves to post. They snap together for easy installation. Four to a pack.

- MDRMBPSC Shelf Clips



## Hold Your Units Together with These S-Hooks

Add-on units are made easy with our S-Hooks. Use 2 for each add-on wire shelf and 3 for widespan shelves over 30". When connecting an Add-on unit the S-Hooks are used in the corners for L-shaped units and on the side for back-to back units or on the ends for continuous runs of shelving. Four to a pack.

- MDRMSH S-Hooks, Chrome

## Keep Shelf Contents Intact with TownLine Enclosure Panels

MDRM1863E 18" x 63"  
MDRM2463E 24" x 63"

The number in parenthesis e.g., (1) is the quantity you will need to order. Some sizes may require ordering more than one of the same item number.

Use the handy reference to help you determine the number of Enclosure Panels you need. Remember to note the width and depth of your shelves, and then follow the chart to identify the panels you need to order. For three-sided enclosures you will need to order for the back and for both sides. These are not compatible with solid shelves.

Shelf width/ length	Panel needed	Shelf width/ length	Panel needed
18	(1) MDRM1863E	48	(2) MDRM2463E
24	(1) MDRM2463E	54*	(2) MDRM1863E
30*	(2) MDRM1863E		(1) MDRM2463E
36	(2) MDRM1863E	60	(1) MDRM2463E
42	(1) MDRM1863E		(2) MDRM1863E
	(1) MDRM2463E	72	(3) MDRM2463E

\* Due to the available widths of enclosure panels, 6" will be overlapping

For additional sizes, ask your Medline sales representative.

## Solid Galvanized Steel Shelf

Our 18-gauge solid galvanized steel shelves are a cost effective alternative to stainless steel. Use one or more on a shelving unit – can be combined with other shelves we carry on a unit. Plastic shelf clips are included.

MDREG1836G 18" x 36"  
MDREG1848G 18" x 48"  
MDREG1860G 18" x 60"  
MDREG2436G 24" x 36"  
MDREG2448G 24" x 48"  
MDREG2460G 24" x 60"



## Strong, Mobile Wire Utility Carts

Our popular utility carts consists of 2 "U" shaped handles, 2 or 3 shelves, plastic shelf clips and 2 ea 5" swivel casters and 2 ea 5" swivel break casters with donut bumpers. The overall height is 39½". Chrome finish.

MDRM18302UC	2 Shelves, 18"W x 30"L
MDRM18362UC	2 Shelves, 18"W x 36"L
MDRM21362UC	2 Shelves, 21"W x 36"L
MDRM18303UC	3 Shelves, 18"W x 30"L
MDRM18363UC	3 Shelves, 18"W x 36"L



## TownLine Wire Folding Utility Cart

Our folding utility cart is one of the most popular and versatile carts used in a health care facility. Features chrome plated frame, 4" inch rubber ball bearing casters and 50 lbs capacity. Poly coated wire baskets are sold separately.

MDRM510440	Folding Utility Cart
MDRM51044612	Wire Baskets – one 6" and one 12"

## Covers Help Keep Tools, Supplies and Linens Clean and Dust-Free

These nylon covers provide an extra measure of protection, and they keep stored linens fresh. Constructed of tear-resistant 400 denier nylon, the covers are available with Velcro® or zippered closure\*.

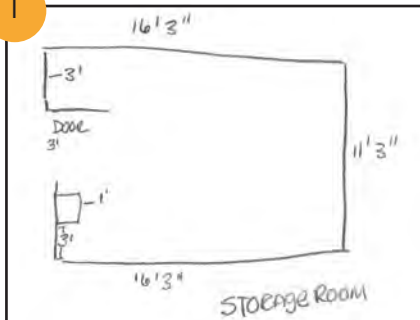


MDRCC184863	18" x 48" x 63"
MDRCC184874	18" x 48" x 74"
MDRCC186054	18" x 60" x 54"
MDRCC186063	18" x 60" x 63"
MDRCC243663	24" x 36" x 63"
MDRCC243674	24" x 36" x 74"
MDRCC244854	24" x 48" x 54"
MDRCC244863	24" x 48" x 63"
MDRCC244874	24" x 48" x 74"
MDRCC246054	24" x 60" x 54"
MDRCC246063	24" x 60" x 63"
MDRCC246074	24" x 60" x 74"

\*State closure and nylon color when ordering. Closures: Velcro, or zipper. Colors: Red, Blue, Green, Yellow, and White. Additional colors and sizes available. Call your Medline Representative for a quote. **Please verify your measurements, covers are custom and non-returnable.**

For large or small projects, designing a custom TownLine solution for your storage space is as easy as 1, 2, 3.

1



Ask your local Medline representative to sketch the dimensions of your space.

2



You will receive a custom diagram of your space from our design experts along with a detailed listing of components to complete your project.

3



Order your TownLine Wire components and set up your new storage space. TownLine is easy to assemble – no tools required!

For more information contact your Medline Sales Representative or call 1.800.Medline.



1-800-MEDLINE | [www.medline.com](http://www.medline.com)

©2007 Medline Industries, Inc. One Medline Place,  
Mundelein, IL 60060 Medline is a registered trademark  
of Medline Industries, Inc.  
MKT207028/LIT359/5M/ZPN/2

Medline Canada 1-800-396-6996  
[www.medline.ca](http://www.medline.ca) [canada@medline.com](mailto:canada@medline.com)  
Not all products are currently available for sale in  
Canada. Please contact your Account Representative  
for additional information.