



## Soothe and Cool® Skin Care from Medline

pH balanced formulas to nourish, protect and revitalize the skin.



## Soothe and Cool® Skin Care from Medline

pH balanced formulas to nourish, protect and revitalize the skin.

Compromised and elderly patients have special skin care needs.

For over 15 years, clinicians have trusted Soothe & Cool products to improve skin conditions while protecting and replenishing the skin.

Our Soothe & Cool line is formulated with gentle, clinically-effective ingredients that improve patients' well-being and reduce nursing time.



### Condition the skin as you cleanse

Keeping the skin clean is the first line of defense. Using soap can actually be harmful because it is more alkaline compared to the naturally acidic pH of skin. Soap can strip the acid mantle, increasing the risk of dryness, irritation and breakdown. All Soothe & Cool cleansing products are pH balanced, gentle and easy to use for every day bathing and incontinent care. Plus, added ingredients like aloe and vitamins help soothe and condition the skin.

### Specially formulated moisturizers for chronically dry, irritated and sensitive skin

Properly hydrated skin is healthier skin. When the skin is too dry it loses some of its protective ability and in extreme cases, leads to skin tears. Soothe and Cool lotions and creams offer a range of moisturizing levels to help keep the skin hydrated.

### Gentle protectants against harsh irritants

Moisture from incontinence, perspiration and wound drainage can help contribute to skin breakdown. Soothe & Cool protective barriers help create a shield to block these elements from damaging the skin. Yet our gentle formulas won't irritate sensitive skin.



## The power of aloe and vitamins

We've taken special care with each Soothe & Cool product to make sure that it's packed with the healing and protective features you want — like aloe and vitamins, and free of the ingredients you don't want — like overpowering scents and greasy emollients.

Aloe is an organic extract from aloe plants. A natural skin healer, aloe also helps make skin smoother. By helping the natural process of cell division and sloughing off dead cell tissue, aloe helps rejuvenate and rebuild healthy, new skin.



*Soothe & Cool products contain aloe to help soothe and heal the skin.*

We have also included Vitamins A, D and E in many Soothe & Cool products to help improve and accelerate the regenerating and healing process of the skin.

## Over 50 wound care product specialists.

Naturally a good skin care program is not just about quality products. That's why we've assembled a staff of product specialists to help offer you a complete skin care program.

We have over 50 skin and wound care product specialists (in addition to our 600-person sales force which represents the rest of our product line) devoted to supplying you with the products, service and educational support necessary to implement the strongest skin care program available.



*Our product specialists can help train your staff.*

Our team of product specialists is highly trained and available to deliver on-site, face-to-face training for your staff.

## The importance of good skin care

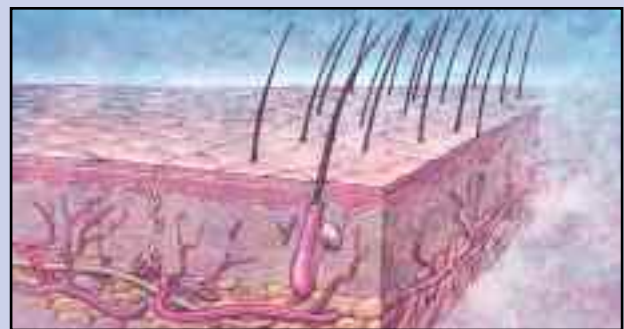
Good skin care is vital to the well-being of your patients and residents.

As the largest organ in the body, the skin plays a crucial role in helping protect our bodies. It helps maintain internal temperature, prevents moisture loss, protects against harmful bacteria and in general, provides a barrier against the elements.

Several factors can diminish the skin's ability to perform important functions:

- Aging thins the skin, causing reduced moisture, less protection against bacteria and increased chance of skin tears
- Disease can reduce blood flow
- Inadequate nutrition can slow regeneration
- Incontinence introduces a barrage of harmful elements
- Medication can compromise skin health

How does our Soothe & Cool system help with these factors? An integrated approach to skin care is one of the best ways to counter these factors and maintain skin integrity. Our comprehensive line of Soothe & Cool products helps you cleanse, moisturize and protect the skin.



*The skin is our first line of defense against many harmful elements. Although skin thins as we age, proper skin care help improve the odds.*



**Foaming No-Rinse Perineal Wash**



**Perineal Wash**



**No-Rinse Perineal Wash**





# Soothe & Cool perineal washes offer effective, yet gentle cleansing.

## Cleanse and deodorize skin in the perineal area.

Gentle enough to be used in other parts of the body if needed.

## Breaks up solid matter

Emulsifiers help break up solid matter, allowing effective cleansing with less friction.

## Deodorizes as it cleans

Contains mild, biodegradable surfactants that gently remove debris and odors.

## Enhanced formula

Aloe helps soothe skin along with added vitamins.

## Foaming, No-Rinse Perineal Wash

### No dripping

The foaming perineal wash is designed to stay in place, with no mess.

### Complete coverage

The foam offers excellent coverage, helping the caregiver cleanse the patient's skin thoroughly.

### Quantity used can be easily controlled

Offers less product waste.

### Easy to use

Simply spray and wipe clean.

### Safe, ozone-friendly propellants

A safe mixture of propellants make the product non-flammable.

<u>Item No.</u>	<u>Description</u>	<u>Packaging</u>
MSC095323	8 oz., scented	24/cs
MSC095326	8 oz., unscented	24/cs

## Perineal Wash

### Can be used full strength

Use it full-strength for major clean-ups.

### Can be diluted

Rinse version can be diluted 1:1 for additional economy, without affecting performance.

### Mild fragrance

Leaves the skin smelling clean.

<u>Item No.</u>	<u>Description</u>	<u>Packaging</u>
MSC095310	8 oz. spray bottle	12/cs
MSC095312	Gallon (includes four empty 8 oz. spray bottles)	4/cs
MSC095314	Empty 8 oz. spray bottles	12/cs

## No-Rinse Perineal Wash

### Contains no dyes or perfumes

No masking odors and it won't irritate skin. Ideal for sensitive skin.

### Easy clean up

No-rinse formula makes clean up a breeze. Simply spray and wipe clean. Ideal for immobile patients.

<u>Item No.</u>	<u>Description</u>	<u>Packaging</u>
MSC095320	8 oz. spray bottle	12/cs
MSC095322	Gallon (includes four empty 8 oz. spray bottles)	4/cs
MSC095324	Empty 8 oz. spray bottles	12/cs



Shampoo and Body Wash Concentrate



No-Rinse Shampoo and Body Wash



Shampoo and Body Wash



# Condition as you clean with our shampoo and body washes

## Cleansing and conditioning for the whole body

All Soothe & Cool shampoo and body washes are gentle enough to use on the entire body and hair, cleansing and conditioning.

## pH balanced

Helps protect the acid mantle of the skin. Gentle enough for everyday use.

## Enhanced formula

Aloe, a natural nourishing agent, and vitamin E help soothe skin and condition hair. Contains mild, biodegradable surfactants that gently cleanses and eliminates odors.

## Shampoo and Body Wash Concentrate

### Can be diluted

Concentrated cleanser can be diluted up to 4:1 for economy without affecting performance.

### Can be used full strength

Use it full-strength for major clean-ups.

### Easy rinsing

Low sudsing formula for easy rinsing.

### Ideal for whirlpools

Perfect for automatic dispensing systems.

<u>Item No.</u>	<u>Description</u>	<u>Packaging</u>
MSC095350	16 oz. flip top	12/cs
MSC095352	Gallon (includes four empty 8 oz. bottles)	4/cs
MSC095354	Empty 8 oz. bottles	12/cs
MSC095356	8 oz. flip top	12/cs

## No-Rinse Shampoo and Body Wash

### Reduces nursing time

No-rinse formula makes cleansing patients' skin a snap. Spray onto a moistened washcloth and wipe clean.

### Ideal for bedside bathing

Easy patient care for immobile patients. Ideal for sensitive skin.

### Contains no dyes or perfumes

No masking odors and it won't irritate skin.

<u>Item No.</u>	<u>Description</u>	<u>Packaging</u>
MSC095440	8 oz. spray bottle	12/cs
MSC095442	Gallon (includes four empty 8 oz. spray bottles)	4/cs
MSC095446	Empty 8 oz. bottles	12/cs

## Shampoo and Body Wash

### Gentle, never harsh

pH balanced for everyday use on skin and hair.

### Lathers well and rinses easily

Low sudsing for easy rinsing, leaving only a clean, fresh scent.

<u>Item No.</u>	<u>Description</u>	<u>Packaging</u>
MSC095340	16 oz. flip top	12/cs
MSC095342	Gallon (includes four empty 8 oz. bottles)	4/cs
MSC095346	Empty 8 oz. bottles	12/cs
MSC095348	4 oz. flip top	48/cs



Skin Cream



Extra Thick Moisturizing Cream



Moisturizing Body Lotion





# Provide long-lasting moisturization and relief for dry skin

## What's the difference between a lotion and a cream?

Although lotions and creams are both water-based, creams are thicker because they contain less water. Lotions are lighter and easier to spread, while creams are designed for dry, rough areas that need special care.

Emollients and emulsifiers in our lotions and creams help prevent water loss. Since creams have higher solid content and less water, they're designed as a therapeutic treatment. Lotions are a more economical choice for all-over, every day moisturizing.



## Extra Thick Moisturizing Cream

### Ideal for extreme dryness

With aloe and vitamins A, D and E, Soothe & Cool Extra Thick Moisturizing Cream helps provide long-lasting relief of dry, chapped or chafed skin.

### Therapeutic skin treatment

Moisturizes dry skin, including dry skin associated with eczema and psoriasis.

### Non-irritating, fragrance free

Provides a non-irritating, fragrance-free, skin moisturizer and protectant that softens and helps heal dry or sensitive skin.

Item No.	Description	Packaging
MSC095336	4 oz. jar	24/cs
MSC095338	16 oz. jar	12/cs

## Skin Cream

### Fortified with Vitamins A, D and E

Nourishes and moisturizes the skin, helping it recover its function as a natural barrier.

### Helps prevent skin breakdown

Excellent skin cream, recommended on bony prominences, when lotion is not enough.

### Non-greasy, thick, rich formulation

Ideal for ostomy patients. Skin cream rubs in easily without a greasy residue. Ideal for under tape to minimize tape burns.

Item No.	Description	Packaging
MSC095330	2 oz. tube	12/cs
MSC095332	8 oz. tube	12/cs
MSC095334	2 oz. tube, unscented	12/cs

## Moisturizing Body Lotion

### For general and daily use

Can be used over the entire body, making it ideal for after bathing, massaging and every day skin maintenance.

### Non-greasy, no residue

It rubs in easily without leaving skin feeling greasy.

### With or without fragrance

Unscented version specially formulated for sensitive skin.

### Enhanced formula

Aloe, a natural nourishing agent, and vitamin E help soothe skin.

Item No.	Description	Packaging
MSC095362	8 oz., scented, flip top	12/cs
MSC095364	Gallon, scented (includes four empty 8 oz. bottles)	4/cs
MSC095366	8 oz., unscented, flip top	12/cs
MSC095368	4 oz., scented, flip top	48/cs
MSC095362X	Empty 8 oz bottle	12/cs



**INZO Zinc Oxide Barrier Cream**



**Moisture Barrier Ointment**



**Skin Paste**



# Relieve and protect the skin from harsh irritants

## When to use which barrier.

Our Soothe & Cool **Moisture Barrier** is recommended when the skin is at risk but hasn't been compromised or damaged.

A strong barrier such as Soothe & Cool **INZO** is recommended when epidermal stripping, red or chapped skin are present (Stage I).



Soothe & Cool **Skin Paste** is recommended when the skin has been compromised (Stage I and excoriations). Raw, bloody denuded skin can be caused by skin moisture and wetness from incontinence (both urinary and fecal), skin maceration, skin alkalization and increases in skin friction that weaken the skin.

## Moisture Barrier Ointment

### Creates a barrier

Prevents moisture, urine and fecal matter from contacting skin. Ideal in cases of incontinence, post-op or wound drainage.

### Made from pure petrolatum

Contains no mineral oil or water that compromises effectiveness. A thin, occlusive layer of petrolatum protects for up to two hours in the presence of urine.

### No dyes, no fragrance formula

Ideal for sensitive skin. No ingredients that could irritate skin.

### Enhanced formula

Vitamins A, D and E, along with aloe, nourish the skin.

Item No.	Description	Packaging
MSC095380	2 oz tube	12/cs
MSC095382	7 oz tube	12/cs
MSC095384	5-gram unit pack	144/gr

## INZO Zinc Oxide Barrier Cream

### An invisible barrier

Designed to prevent moisture, urine & fecal matter from contacting skin. INZO allows the skin to breathe without being occlusive. Rubs in clear to permit easy monitoring.

### Unique formula

Unique formula of 5% dimethicone and 5% zinc oxide. Dimethicone is a silicone-based barrier that also moisturizes the skin, while zinc oxide is recognized as an astringent that strengthens the skin.

### It dries "dry"

Ideal for under tape, INZO leaves a non-greasy, invisible barrier. Non-petrolatum formula won't obstruct brief pores. Ideal for around ostomy sites or peri wound skin to protect skin from maceration damage.

### No dyes, no fragrance

INZO is specially-formulated with no dyes or perfumes.

### Enhanced ingredients

Vitamins A, D and E nourish the skin.

Item No.	Description	Packaging
MSC095420	4 oz. tube	12/cs
MSC095422	8 mL unit pack	144/gr

## Skin Paste

### Next generation barrier absorbs and protects

Thick protective formula both protects (with zinc oxide and petrolatum) and absorbs excess exudate (with karaya gum).

### Stays on the skin

Effective over wet, compromised skin. Stays in place and protects against moisture, urine & fecal matter.

### Enhanced formula

Allantoin and aloe help heal while vitamins A, D and E help nourish the skin.

Item No.	Description	Packaging
MSC095450	2.5 oz tube	12/cs



# Protect against fungi and moisturize the skin with INZO Antifungal

## INZO Antifungal Cream

### Effective antifungal

With 2% Miconazole Nitrate, INZO Antifungal is effective against a variety of fungi including *tinea pedis* (athlete's foot), *tinea cruris* (jock itch) and *tinea corporis* (ring worm). It is also effective against *C. albicans* and Tricophyton mentagrophytes.

### Invisible protection

Designed to prevent moisture, urine & fecal matter from contacting skin. INZO Antifungal allows the skin to breathe without being occlusive. Rubs in clear to permit easy monitoring.

### Unique formula does not wash away

Easy to apply and spread, INZO Antifungal adheres well to wet or damp skin, such as skin folds, to keep working in places where fungi is most likely to grow.

### Dries "dry"

Ideal for under tape, INZO Antifungal leaves a non-greasy, invisible film. Formula won't obstruct brief pores. Ideal for around ostomy sites or peri wound skin to protect skin from maceration damage.

### No dyes, pleasant fragrance

Specially-formulated with no dyes and a light fragrance.



INZO Antifungal

Item No.	Description	Packaging
MSC095632	2 oz. tube	24/cs
MSC095635	5 oz. tube	12/cs

## Preventative skin care lowers incidence of pressure ulcers

In a recent study, Yale School of Nursing researchers found that a comprehensive prevention program significantly reduced the incidence of pressure ulcers.

Investigators discovered the incidence of pressure ulcers was reduced by up to 87%. The long-term

care facilities in the study implemented rigorous skin care prevention systems that included a skin cleanser, moisturizer and moisture barrier as well as staff education, repositioning, support surfaces and standardizing nutrition.

*Lyder CH, Shannon R, Empleo-Frazier O, MegeHee D, White C. A comprehensive program to prevent pressure ulcers in long-term care: exploring costs and outcomes. Ost/wound Manag 2002;48(4):52-62*





# Reduce clean-up time and save money with our all-in-one products



For facilities interested in maximizing efficiency, an all-in-one product will work well. By combining all three of the important characteristics (cleanse, moisturize and protect), all-in-one products reduce clean-up time and are more cost effective.

## Complete TBC

### Complete TBC total body cleanser does it all

Shampoo, body wash and perineal wash all in one.

### No-rinse formula makes clean-up a snap

Requires no rinsing. Simply spray onto skin or washcloth and wipe clean.

### No dyes or perfumes

Formula is gentle enough to be sprayed directly on the skin.

### Adjustable nozzle delivers spray or foam

Flexibility of switching between spray and foam, depending on the clean-up task.

### Enhanced formula

Contains aloe to soothe the skin. Contains mild surfactants that gently remove debris and odors.



Complete TBC

Item No.	Description	Packaging
MSC095600	Spray/Foam Nozzle, 16 oz.	12/cs

## Peri Fresh 3 in 1

### A true 3-in-1 product

Contains mild rinse-free surfactants to cleanse, emollients and humectants to moisturize, and dimethicone to protect.

### Simplify skin care plan and save nursing time

A complete product that will reduce clean up time without compromising quality.

### No-rinse formula

It can be used all over the body. No need to rinse it off.

### Moisturizes as it cleans

Enhanced emollients and humectants help moisturize as it cleans.

### Enhanced formula

Aloe vera and vitamins A, D & E help moisturize the skin. Contains mild surfactants that gently remove debris and odors.

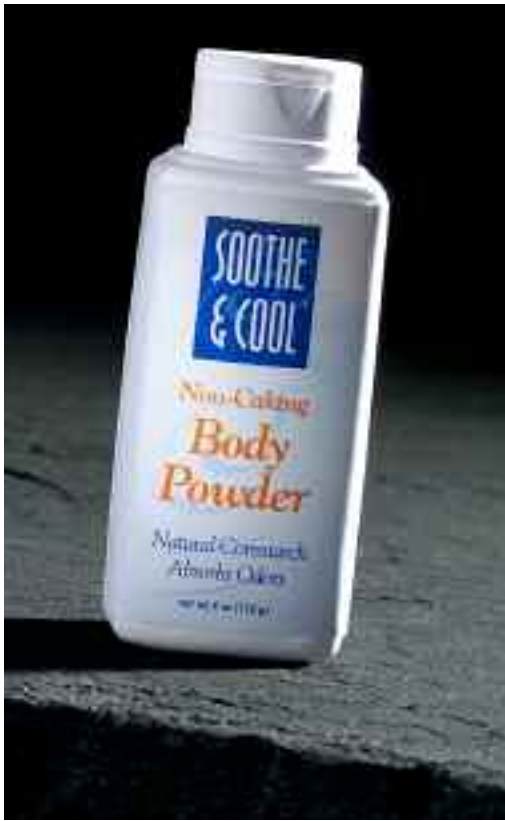
### Applies easily

Peri Fresh has a smooth, creamy consistency that doesn't run, making it easy to spread on the patient with no mess.



Peri Fresh 3 in 1

Item No.	Description	Packaging
MSC095410	8 oz. tube	12/cs
MSC095412	1 liter pump	12/cs
MSC095415	Wall brackets for 1 liter pump	12/cs



## Cornstarch Body Powder

### Absorbs moisture and odors

Made from 100% cornstarch for natural absorption.

### Non-caking and biodegradable for easy rinsing

Because it's made with cornstarch, it feels exceptionally soft, is biodegradable and rinses off easily.

<u>Item No.</u>	<u>Description</u>	<u>Packaging</u>
MSC095390	4 oz.	36/cs
MSC095392	14 oz.	12/cs
MSC095394	1.5 oz.	48/cs

## Incontinent Care Kits

Medline offers 2-Part, 3-Part and 4-Part Incontinent Care Kits so you can purchase complete systems that will take care of all your skin care needs. Components are packaged in attractive, easy-to-store boxes that promote single-patient use and reduce the risk of cross-contamination.

<u>Item No.</u>	<u>Description</u>	<u>Packaging</u>
MSC095500	<b>2-Part Incontinent Care Kit</b> 8 oz. spray bottle of No-Rinse Perineal Wash 4 oz. tube of INZO Zinc Oxide Barrier Cream	12/cs
MSC095502	<b>2-Part Incontinent Care Kit</b> 8 oz. spray bottle of No-Rinse Perineal Wash 2 oz. tube of Moisture Barrier Ointment	12/cs
MSC095503	<b>3-Part Incontinent Care Kit</b> 8 oz. spray bottle of No-Rinse Perineal Wash 2 oz. tube of Skin Cream 2 oz. tube of Moisture Barrier Ointment	12/cs
MSC095405	<b>4-Part Incontinent Care Kit</b> 8 oz. spray bottle of No-Rinse Perineal Wash 2 oz. tube of Skin Cream 2 oz. tube of Moisture Barrier Ointment 4 oz. bottle of Cornstarch Body Powder	12/cs





## Cleansing Bath Oil

### Restores lost moisture

Extremely effective moisturizer when added to bath.

### Can be used as part of hydrotherapy

Since prolonged exposure to water can seriously deplete the skin's moisture, Soothe & Cool Cleansing Bath Oil should be a part of every bath or whirlpool session.

### Light fresh scent

Unlike the overpowering scents of other bath products, you'll appreciate the fresh scent of the Cleansing Bath Oil.

<u>Item No.</u>	<u>Description</u>	<u>Packaging</u>
MSC090472	3.5 oz., screw cap	96/cs
MSC090474	Gallon	4/cs
MSC090476	Empty bottles, 3.5 oz.	12/cs

## Accessories

Work-saving accessories allow you to buy Soothe & Cool products in the money-saving gallon size without sacrificing the convenience of smaller dispensers.

### Wall Mount Dispenser

Our refillable, white Wall Mount Dispenser holds 46 ounces. It comes with a removable back plate which can be affixed to a wall with supplied adhesive tape or screws (not included).

### Dispenser Pump

The sturdy Dispenser Pump works well with all Soothe & Cool gallon containers for quick, mess-free dispensing.

### Wall Bracket

The heavy-duty, 1/4" wire Wall Bracket for gallon containers helps eliminate shelf or floor clutter. The blue epoxy coating prevents rusting and the bracket screws tightly against the wall (screws not included).



<u>Item No.</u>	<u>Description</u>	<u>Packaging</u>
IPT800	Wall bracket for gallon container	each
IPT904	Dispenser pump for gallon container	12/cs
IPT9346	Wall mount dispenser, 46 oz.	each



**Protection Plus® Soaps.  
Designed by Medline and  
Made by Dial**

Medline has partnered with Dial to bring you quality hand care products exclusively for the health care professional. Featuring enriched lotion soap, antimicrobial soap and body & hair shampoo.



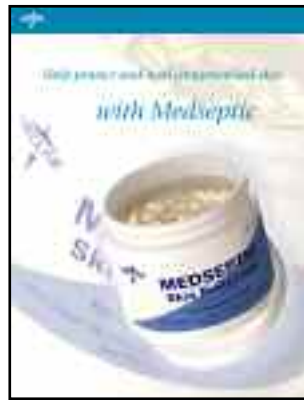
**Just for You is ideal for  
replenishing dry skin and  
hair**

Just For You products were carefully formulated for people with dry skin and hair. Fortified with collagen, protein and amino acids, Just For You works to help strengthen and restore skin and hair's inner strength and outer radiance.



**Keep Dandruff Under  
Control with Medline  
Dandruff Shampoo**

Medline's Dandruff Shampoo utilizes pyrithione zinc, along with enriching cleansers and conditioners, to help keep hair healthy, manageable and dandruff free.



**Help protect and heal  
compromised skin with  
Medseptic**

Medseptic takes advantage of the purest form of lanolin to help act as a protectant and a moisturizer for dry or compromised skin.



**Advanced Wound Care  
Innovations from Medline**

From Arglaes and SilvaSorb (our revolutionary antimicrobial silver products) to TenderWet (rinses and debrides necrotic wounds for up to 24 hours), Medline continues a legacy of breaking new ground. Our products not only help improve outcomes, but help reduce nursing time and lower costs.

1-800-MEDLINE | [www.medline.com](http://www.medline.com)

© 2003 Medline Industries, Inc., Mundelein, Illinois 60060

INZO, Peri Fresh, Protection Plus, Soothe & Cool and Medline are registered trademarks of Medline Industries, Inc.