

Medical Carts



MEDLINE CARTS

Medline understands the unique requirements of the Health Care market and has responded with a series of medication carts that the nursing professionals depend on. Our carts are quality products at reasonable prices, reliable service and custom configurations capable of accepting a wide range of medication dispensing systems.



Our Full Size Medication Cart System

comes with push handles, Tamper Resistant Best® Lock, slide out shelf that extends an extra 11", ABS plastic molded top, removable cassettes that can be ordered in 3", 5" or 7.5" bins, wrap around bumper, 5" easy roll casters (two swivel, one tracking, one w/locking toe brake).

Includes narcotic lock on top drawer.

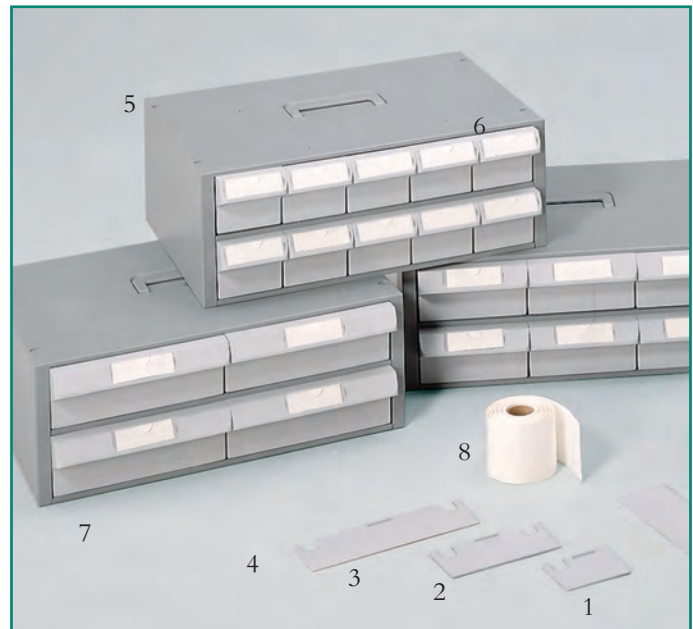
MPH01WMLAC2 Full Sized Medication Cart
Dimensions (includes casters)

Overall shell size 38.91"W x 22.94"D x 44"H

Medline's Medication Components

allow adaptability for varied medication systems. Multiple drawer configurations and three sizes of lockable cassettes accommodate necessary patient capacity and bulk storage requirements.

- (1) MPH01WBDFB (12/ctn.)
Bin dividers front to back for all bin sizes.
- (2) MPH01WBD3B (30/ctn.)
- (3) MPH01WBD5B (30/ctn.)
- (4) MPH01WBD7B (16/ctn.)
Bin dividers left to right for 3", 5" or 7.5" bins.
- (5) MPH01WCAS3MTC (10-3" bins/cassette)
- (6) MPH01WCAS5MTC (6-5" bins/cassette)
- (7) MPH01WCAS7MTC (4-7.5" bins/cassette)
2 tier cassettes with patient bins included.
Cassettes are stackable.
- (8) MPH01WLBL1B Bin Labels 4 Rolls.
250/roll



MEDICATION DELIVERY CARTS



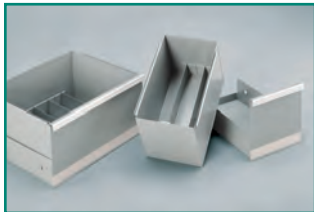
Medline's Half Sized Medication Delivery Cart

will hold up to 222 pill cards. Comes with two - 4" drawers and two - 10" drawers. Standard features are push handles, Tamper Resistant Best® Lock, slide out shelf that extends an extra 11", ABS plastic molded top, removable cassettes, wrap around bumper, 5" easy roll casters (two swivel, one tracking, one w/locking toe brake). Includes narcotic lock on top drawer. MPH01WMLLTC1 Holds up to 222 (6" x 9") pill cards

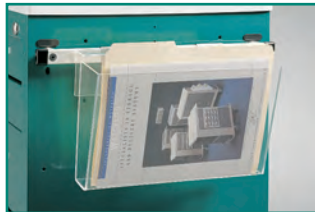


Our Half Sized Unit Dose Medication Cart

comes complete with one 6" drawer that includes a narcotic lock and 4 cassette drawers. These are standard 5" cassettes, but you can request 3" or 7.5" bins if you require a different size. MPH01WMLAC1 w/24 - 5" Patient Bins



MPH01WDIVHT & MPH01WDIVMT Dividers



MPH01WCHT1 Chart Holder



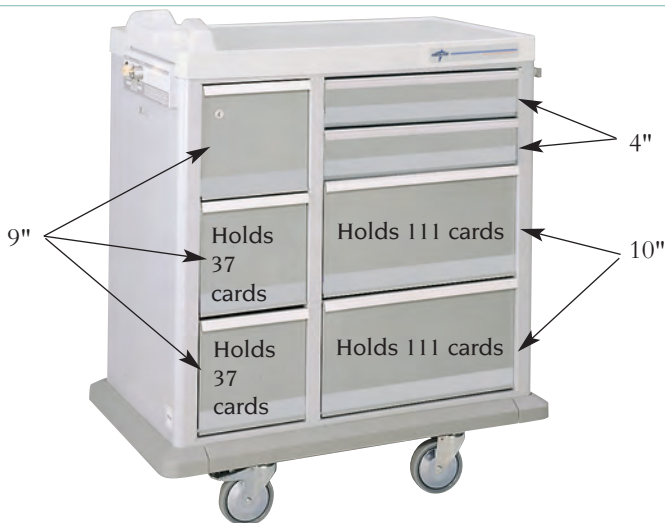
MPH01WSR1 Aluminum Side Rail



MPH01WSB1 Sharps Bracket



MPH01WWL3 Wall Lock



Our Full Size Medication Carts

come with several different drawer configurations. The two 9" half size drawers, on the left side of the cart, will hold 37 pills each and on the right side of the cart the two -10" drawers, will hold 111 pill cards each. This gives you a cart that will hold 333 (6"x 9") Pill Cards. MPH01WMLLTC3



Simply by Taking the Full Size Medication Cart

and changing a couple of the drawer configurations, we can now hold up to 407 (6" x 9") pill cards. Both carts come with the standard features: push handles, Tamper Resistant Best® Lock, slide out shelf that extends an extra 11", ABS plastic molded top, wrap around bumper, 5" easy roll casters (two swivel, one tracking, one w/locking toe brake). Includes Narcotic Lock on top drawer. MPH01WMLLTC2 Holds up to 407 (6" x 9") pill cards.

MEDLINE CARTS



Ergonomic, molded top/handle accessible from all sides

Recessed O2 tank brackets protect valves and gauges

Full extension see-through drawer trays

Adjustable door storage and more flexibility

Removable transportable trays for ease of restocking with bag system

Tough, molded stabilizer frame bumper allows all drawers to be fully extended



Instant access- one touch breakaway seal opens for quick response



Ergonomic, molded top/handle accessible from all sides



Cardiac board is a standard accessory and mounts to the back

This Cart is Unrivaled in Simplicity, Accessibility and Visibility!

A simple press of the “open” button shears the seal for the doors to open which reveal transparent trays stocked with your code equipment and supplies. The removable trays can be conveniently placed at the bedside, then transported for exchange without moving the cart. Although requiring less floor space, the ER2000’s cubic volume is equivalent to a 5-drawer cart.

MPH01W2000

Each cart comes with: 2 ambu bag hooks cardiac board and bracket, airway circulation labels, IV Pole, oxygen tank bracket and 100 plastic breakaway seals

Dimensions

(includes casters, bumper and top)

Overall	26"W x 32"D x 44.25"H
Open	.43"W x 32"D x 44.25"H
Drawers Trays	
(1-4)	14.7"W x 20.7"D x 2.5"H
(5)	14.7"W x 20.7"D x 5.5"H
Drawers Bins	
(4 each)	7.5"W x 2.9"D x 2.8"H
(2 each)	7.2"W x 5.6"D x 2.6"H



Medline's Emergency Carts

are built to last, utilizing zinc-plated steel to prevent rust, V-ribbed back for added strength and a superior powder-coat paint process. These carts are durable, attractive, scratch and corrosive resistant, plus easy-to-clean. Full extension drawers with roller bearing slides provide convenient access to critical supplies.

MPH01WML3P is a slightly smaller cart standing 36" high with only three drawers, great for use in those areas requiring a shorter cart.

MPH01WML5P

(shown w/optional accessories, sold separately)

Dimensions

(includes casters, bumper and top)

Overall 29"W x 24"D x 43"H

Drawers

(1) 22"W x 16"D x 4"H

(2-4) 22"W x 16"D x 3"H

(5) 22"W x 16"D x 6"H

Panel 22"W x 16"D x 9"H

Optional Accessories:



MPH01WCBB6 Cardiac Board & Bracket



MPH01WIV2 IV Pole



MPH01WSSG2C Side Shelf, Gray



MPH01WPS100
Plastic Breakaway Seals



MPH01WUH2 Utility Hooks (2)



MPH01WR3 Railing & Supports



MPH01WOTB4
Oxygen Tank Brackets

Cart Drawer color choices
shown on page 6

MEDLINE CARTS



MPH01WMLA9

Lightweight Aluminum

Features and Benefits

- * All of our carts now feature antimicrobial properties built in to help suppress the growth of microorganisms.
- * Easier maneuverability and safety when time is of the essence. Lightweight aluminum construction is 30% lighter than standard steel carts.
- * Four vertical aluminum corner-mounting tracks to mount and adjust accessories without the use of pre-drilled holes.
- * Slide-through side shelf for additional workspace.
- * Four available locking systems to meet your needs. See page 8.
- * ABS plastic molded top and easily adjustable push handle.
- * Five inch premium easy roll casters mount to our high impact plastic stabilizer base.
- * Exterior of cart is available in Light Gray, Electric Red and Electric Blue. Drawer fronts available in 18 colors.



MPH01WML6

Traditional Steel

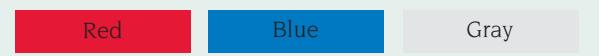
Features and Benefits

- * All of our carts now have antimicrobial properties built in to help suppress the growth of microorganisms.
- * Removable ABS plastic molded top for protection and easy clean-up.
- * Full extensions ball bearing slides for smooth, quiet drawers.
- * Full length cart handle for ease while pushing.
- * Available with 3 locking options: Breakaway (lever) Lock, Key Lock, or Mechanical Push-button Lock.
- * Five inch premium easy roll casters mount to our high impact plastic stabilizer base.
- * Exterior of cart is available in Light Gray, Electric Red and Electric Blue. Drawer fronts available in 18 colors.

Cart color choices for pages 5-7

Please specify a color choice on these drawers as well as your choice of a key or breakaway lock

Shell color options: Red, Electric Blue or Light Gray



Drawers:





MPH01WML3

Three Drawer

Aluminum (MPH01WMLA1)

Steel (MPH01WML3)

Dimensions

(includes casters, bumper and top)

Overall 29"W x 24"D x 36 "H

Drawers

(1) 22"W x 16"D x 4"H

(2-3) 22"W x 16"D x 9"H

Four Drawer

Aluminum (MPH01WMLA2)

Steel (MPH01WML4)

Dimensions

(includes casters, bumper and top)

Overall 29"W x 24"D x 36"H

Drawers

(1-2) 22"W x 16"D x 3"H

(3) 22"W x 16"D x 6"H

(4) 22"W x 16"D x 9"H



MPH01WMLA2



MPH01WMLA5

Five Drawer

Aluminum (MPH01WMLA5)

Steel (MPH01WML5)

Dimensions

(includes casters, bumper and top)

Overall 29"W x 24"D x 36"H

Drawers

(1-2) 22"W x 16"D x 3"H

(3-4) 22"W x 16"D x 6"H

(5) 22"W x 16"D x 9"H

Six Drawer

Aluminum (MPH01WMLA9)

Steel (MPH01WML6)

Dimensions

(includes casters, bumper and top)

Overall 29"W x 24"D x 43"H

Drawers

(1) 22"W x 16"D x 4"H

(2-4) 22"W x 16"D x 3"H

(5) 22"W x 16"D x 6"H

(6) 22"W x 16"D x 9"H



MPH01WML6

Drawer color choices shown on page 6
Locking options shown on page 8

*Any of the carts on this page are available in
Lightweight Aluminum or Traditional Steel. Part
numbers have been provided under each of the
descriptions.

MEDLINE CARTS



MPH01WMLA9P

Pediatric Cart

Our pediatric cart is available in both Lightweight Aluminum (MPH01WMLA9P) and Traditional Steel (MPH01WML9PED). They come with nine cheerful color-coded drawers to brighten any pediatric department.

Dimensions

(includes casters, bumper and top)

Overall 29"W x 24"D x 43"H

Drawers

(1) 22"W x 16"D x 4"H

(2-9) 22"W x 16"D x 3"H

See page 6 for cart color options.



MPH01WML9

Nine Drawer

The four split drawers at the top help to separate instruments and supplies. With a variety of drawer sizes we give you the ability to customize the remaining 21" of space so you can keep all materials within reach.

Dimensions

(includes casters, bumper and top)

Overall 29"W x 24"D x 43"H

Drawers

(1-2) 10"W x 16"D x 4"H

(3-4) 10"W x 16"D x 3"H

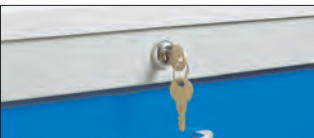
(5-7) 22"W x 16"D x 3"H

(8-9) 22"W x 16"D x 6"H

See page 6 for cart color options.



Lever/Breakaway Lock
(included)



Key Lock
(included)

Available Locking Systems

The following locking options shown here are available for any of our carts:

Lever/Breakaway Lock

Key Lock

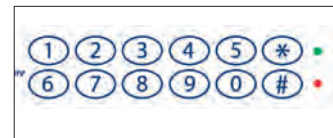
Pushbutton Lock

Our Lightweight Aluminum carts are also available with the new:

Fully-Automated Electronic Lock



Pushbutton Lock
MPH01WSLOCK



NEW Electronic Lock
MPH01WMLAE
(available only on Aluminum carts)

Accessory Packages

Anesthesia Package

MPH01WANESPKG includes:

MPH01WBRS2	Base Rail System
MPH01WBSK1	Waste Receptacle
MPH01WORGIS	Clear Organizer
MPH01WSR1	Side Rail
MPH01WTB6	Tilt Bins (6 Bins)
MPH01WTD1	Tape Dispenser

Treatment & Procedure Package

MPH01WMLPROPK includes:

MPH01WR3	Railing & Supports
MPH01WSSG2C	Collapsible Side Shelf
MPH01WUH2	Utility Hooks (2)
WTLDIVCC2	Cut & Clip Dividers (6) 2" strips w/(8) clips
MPH01WTLTRAY	Adjustable Divider Trays (2-pk)

Isolation Package

MPH01WMLISOPK includes:

MPH01WCR1	Coat Rack
MPH01WR3	Railing & Supports
MPH01WUH2	Utility Hooks (2)

Emergency Package

MPH01WMLERPKG includes:

MPH01WCBB6	Cardiac Board & Bracket
WTLDIVCC2	Cut & Clip Dividers (6) 2" strips w/(8) clips
MPH01WIV2	IV Pole
MPH01WOTB4	Oxygen Tank Brackets
MPH01WPS100	Plastic Seals (100)
MPH01WR3	Railing & Supports
MPH01WSSG2C	Collapsible Side Shelf
MPH01WUH2	Utility Hooks (2)
MPH01WTLTRAY	Adjustable Divider Trays (2-2/pk)

Optional Accessories



Oxygen Tank Bracket w/adjustable velcro strap 2/set. MPH01WOTB4



Cup Dispenser, Adjustable pop up style. Holds 2 to 5 oz cups. 3½"W x 3½"D x 17"H MPH01WCDA2



Magnetic Flex Light, requires batteries. 2½"W x 2½"D x 8"H MPH01WLT1

Railing & Supports, 4 vertical posts, one horizontal rail 29"W x 6½" H MPH01WR3

IV Pole/Bracket, adjustable, 2 hook 7/8"W x 76"H MPH01WIV2



Side Shelf, Gray, Collapsible 18"W x 15"D x 14"H MPH01WSSG2C



Sharps Bracket, Includes key lock for added security. Use sharp container PLA141020. 10.5"W x 6½"D x 13"H MPH01WSB2L



Utility Hooks, 2/set Extends, ½"W x ½"H MPH01WUH2



MEDLINE CARTS

Optional Accessories

Aluminum Side Rail
MPH01WSR1



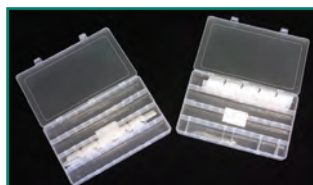
Cardiac
Board/Bracket
24"W x 1"D x 18"H
MPH01WCBB6



Tilt Bins
MPH01WTB6



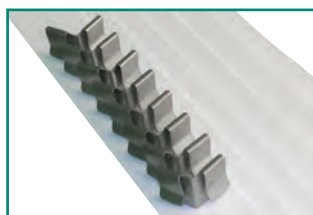
Drawer Trays
Clear plastic adjustable
compartments with
lid. 8.5"W x 14"D x
2"H. 2/pkg.
WPHO1W2T2TRAY



Tape Dispenser
MPH01WTD1



Cut and Clip
Dividers 6-2" strips,
8 metals clips per
package.
WTLDIVCC2



Base Rail System
MPH01WBRS2



Plastic Breakaway
Seals, yellow,
100/pkg
MPH01WPS100



Waste Receptacle
MPH01WBSK1



Coat Rack
MPH01WCR1
Mounts to
Uni-Cart® back.



Clear Organizer
MPH01WORG1S



It's Not Just a Cart It's a Platform for Change!

This cart helps improve productivity by simplifying workflow. The Rubbermaid Mobile Computing Station was designed to optimize patient care. It is a comprehensive eMAR (electronic Medical Administration Records) delivery solution, and the only medication delivery solution that offers the optimal combination of user-friendly features. It has keyless, cardless medication access, medication drawers, large supported work surface as well as convenient bar code scanner placement. It is compact and ergonomically designed and will help to improve your facilities compliance with JCAHO guidelines.

RUB9M08 Mobile Computing Station

RUB9M09 Mobile Medication Station

Specify 2, 5 or 8 drawer configuration

*Please note these carts do not come fully integrated. Integration (bar code wand and computer) is optional.

Medical Error is a critical issue; as many as 98,000 deaths in the US annually may be attributed to medical error.

An estimated 770,000 medication errors occur in hospitals each year.

Medication errors account for one of five deaths or injuries due to medical error.

The Food and Drug Administration (FDA) has ruled that all medications must be bar coded.

The Rubbermaid EMAR cart was designed with the extensive input of nurses, pharmacists, IT specialists, hospital administrators, and construction designers.

*The new Rubbermaid EMAR cart automatically locks down after 2 minutes.

*Keyless, cardless, PIN based security system eliminates worry over lost or stolen keys.





MEDLINE CARTS

1-800-MEDLINE | www.medline.com

©2006 Medline Industries, Inc. Medline is a registered trademark of Medline Industries, Inc.,
One Medline Place, Mundelein, IL 60060. www.medline.com 1-800-MEDLINE
MKT206223/5M/LIT180/zpn/2